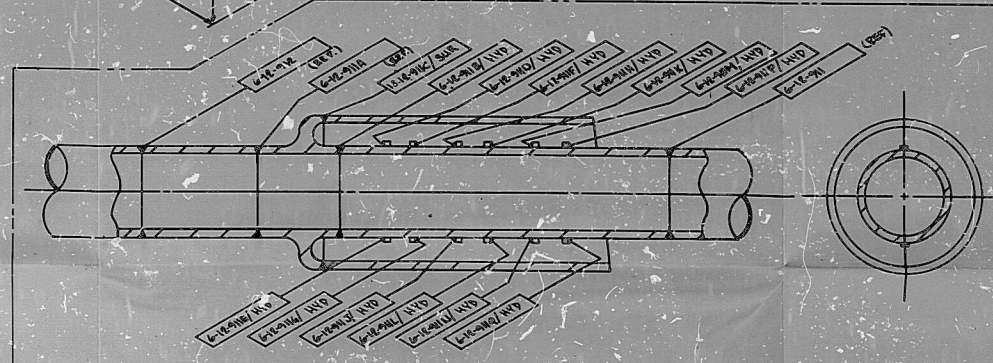


NOTES:  
1. FOR SUPPORT INFORMATION SEE REFERENCE MSK DWGS



DETAIL I - PEN X-14

REFERENCE DWGS:  
 PAID'S:  
 HRS-FM-244-12  
 SUPPORT LOCATION DWGS:  
 MWR-FP-1A; MWR-FP-1B  
 KELLING ISOMETRICS:  
 7172-SYS-12-R1E-4-100, 3 of 5  
 SPOOL SHEETS:  
 F-2865, F-2866, F-2867, F-2868  
 F-2869, F-2870, F-2871, F-2872  
 F-2873, F-2875, F-2876, F-2877  
 F-2878  
 MSK-10-41, MSK-10-01

No.	Date	Revisions	By	Chk	App	Rev
3	8/28/59	COMPLETION OF THIS REFUELING OUTAGE	MM	X	MM	1/1
2	8/28/59	CHECKED FOR 1959	FE	MM	MM	1/1
1	7/2/59	SEE BULLETIN 79-02/07/14	MM	MM	MM	1/1
0		ISSUED FOR IS ONLY	DD	MM	MM	1/1

Scale: Designed [Signature] Drawn MS [Signature] Checked [Signature]  
**GENERAL PHYSICS CORPORATION**  
 COLUMBIA, MARYLAND  
 POWER AUTHORITY OF THE STATE OF NEW YORK  
 JAMES A FITZPATRICK  
 NUCLEAR POWER PLANT

SYSTEM No. ISI-SYS-12	71 APERTURE CARD	
THIS DRAWING CONTAINS LINES: 6" WR-602A-1; 4" WD-602A-14 6" UR-1504-75		
Contract No. NYO-74	Drawing No. 41E0004	Rev. SH 1 3

**PDR**

8510290591

