

NOTES:
 1. FOR SUPPORT INFORMATION SEE REFERENCE MSK DWGS.

REFERENCE DWGS:

P&IDs: FM-22A-13; 11825-FM-22B-10
 SUPPORT LOCATION DWGS:
 MWR-FP-2A; MWX-FP-2B; MWE-FP-67D
 KELLOGG ISOMETRICS:
 717E, SYSTEM 13, SHT. 1 OF 4 SNT. 2 OF 2
 SPECIAL SHEETS:
 F-545, F-544, F-547, F-548, F-549, F-570, F-571
 F-572, F-590
 MSA-102B, MSA-102C, MSA-102D, MSA-102E, MSA-102F, MSA-102G

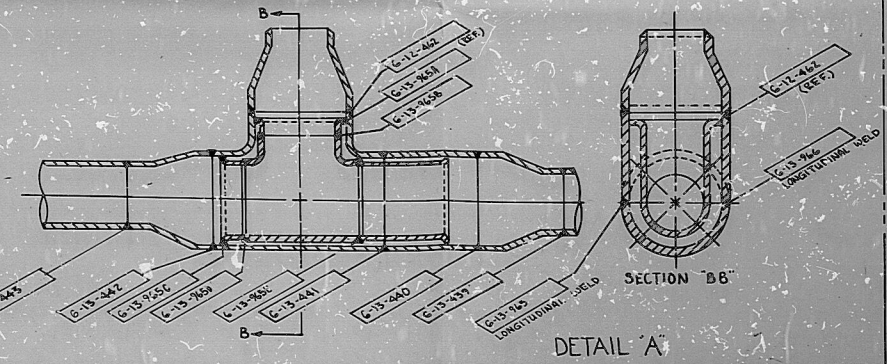
3	SHAW-WALKER	COMPLETION LINES	11/82	MS	MS	MS
2	11/82	REVISIONS OUTLINE	11/82	MS	MS	MS
1	11/82	REVISIONS OUTLINE	11/82	MS	MS	MS
0	11/82	ISSUE BULLETIN 79-02/07/14	11/82	MS	MS	MS
		ISSUED FOR I&M ONLY	11/82	MS	MS	MS
No.	Date	Revisions	By	Chk	Des	App
Scale	Designed	Drawn	MS	Chief	Engineer	

GENERAL PHYSICS CORPORATION
 COLUMBIA, MARYLAND

POWER AUTHORITY OF THE STATE OF NEW YORK
 JAMES A. FITZPATRICK
 NUCLEAR POWER PLANT

PIPING ISOMETRIC
 RCIC SYSTEM

SYSTEM No.	131-SYS-13
Contract No.	NVO-74
Drawing No.	41E0005
Rev.	SH 1 OF 2 3



DETAIL 'A'

THIS DWG. CONTAINS LINES:
 4'-1122-902.6-4A ; 4'-260-123-22
 4'-1122-902-5 ; 4'-062-902-4

TI
 APERTURE
 CARD

PDR

8510290582

