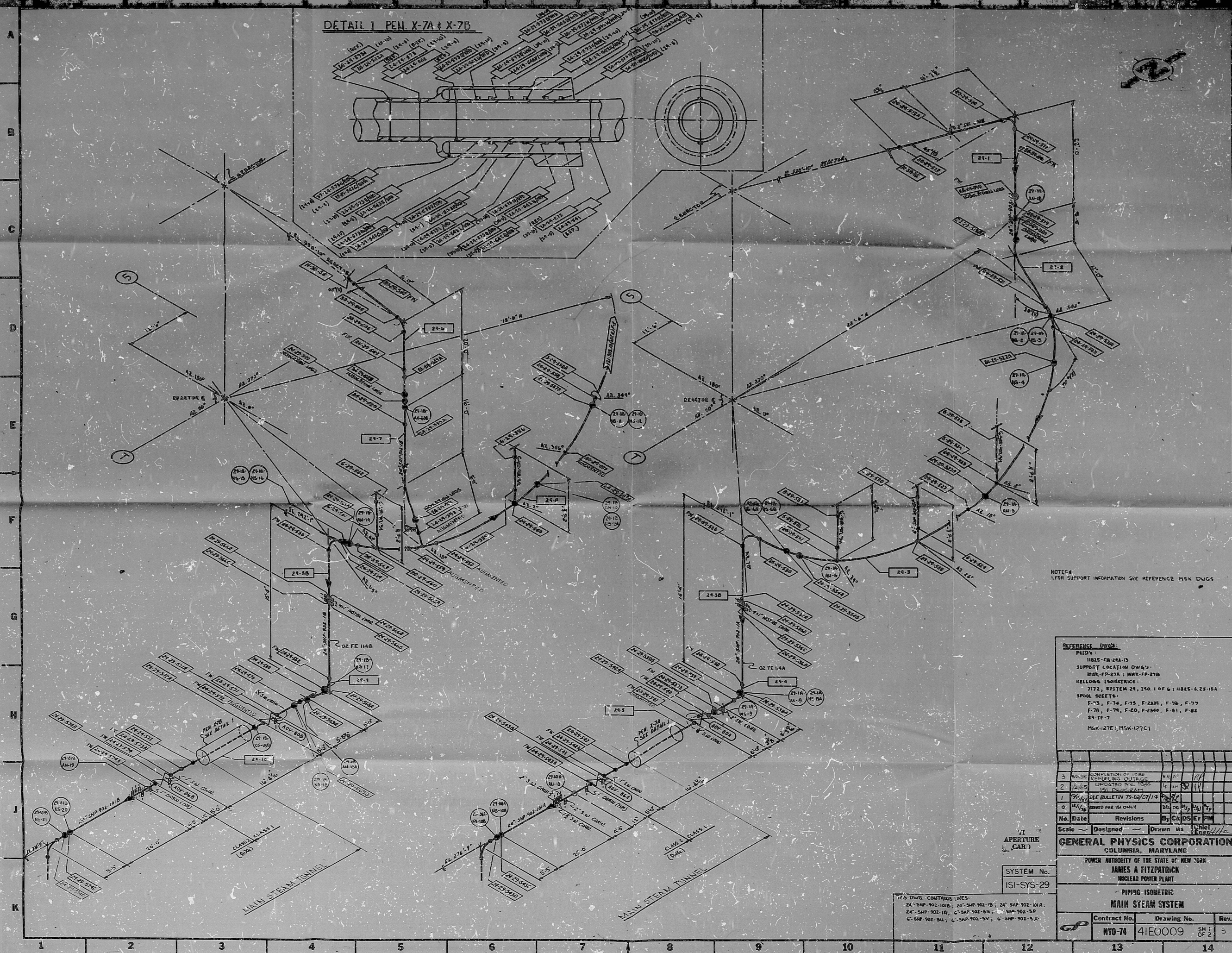


DETAIL 1 PEN. X-7A & X-7B



NOTES:  
FOR SUPPORT INFORMATION SEE REFERENCE MSK DWGS.

REFERENCE DWGS:  
 PLD'S:  
 1185-FM-24-13  
 SUPPORT LOCATION DWGS:  
 MWL-FP-27A; MWL-FP-27B  
 HELLORE ISOMETRICS:  
 2172, SYSTEM 24, ISO 1 OF 6; 1185-6-26-18A  
 SPOL SHEETS:  
 F-73, F-74, F-75, F-239, F-76, F-77  
 F-78, F-79, F-80, F-260, F-81, F-82  
 24-FP-7  
 MSK-127E; MSK-127C1

No.	Date	Revisions	By	Checked	Approved
3	6/28/78	COMPLETION OF WORK	MM	MM	MM
2	2/16/78	REWORKING OUTLINE	MM	MM	MM
1	1/11/78	ISSUE FOR CONSTRUCTION	MM	MM	MM
0	12/1/77	ISSUED FOR INFO ONLY	MM	MM	MM

Scale: ~ Designed ~ Drawn as ~  
 SYSTEM No. ISI-SYS-29

GENERAL PHYSICS CORPORATION  
 COLUMBIA, MARYLAND  
 POWER AUTHORITY OF THE STATE OF NEW YORK  
 JAMES A. FITZPATRICK  
 NUCLEAR POWER PLANT  
 PIPING ISOMETRIC  
 MAIN STEAM SYSTEM

Contract No.	Drawing No.	Rev.
NYO-74	41E0009	SH 1 OF 2

77.5 DWG. CONTAINS LINES:  
 24-SHP-902-10B; 24-SHP-902-1B; 24-SHP-902-10A;  
 24-SHP-902-10; C-SHP-902-54; C-SHP-902-5P  
 C-SHP-902-54; C-SHP-902-5V; C-SHP-902-5X

DB

85LQ29Q57Q

