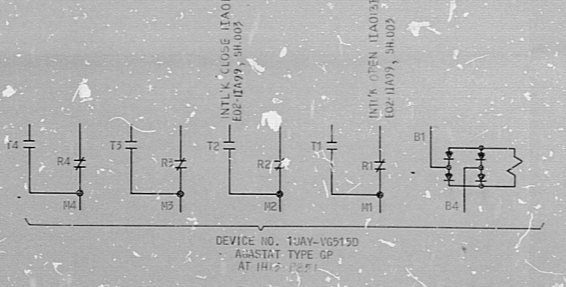
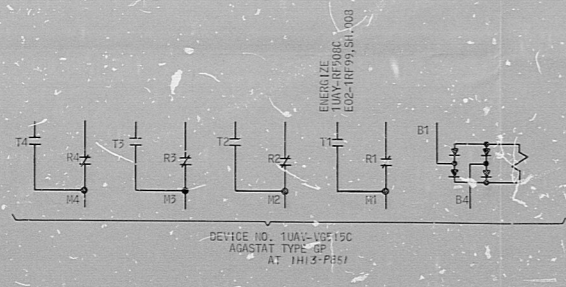
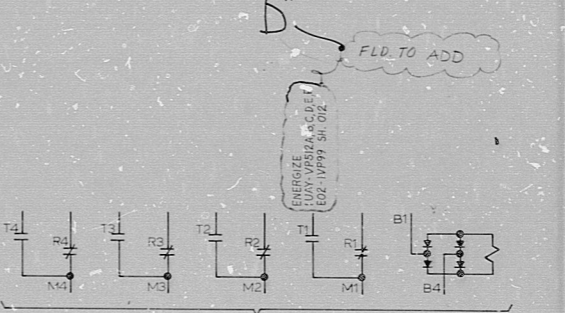
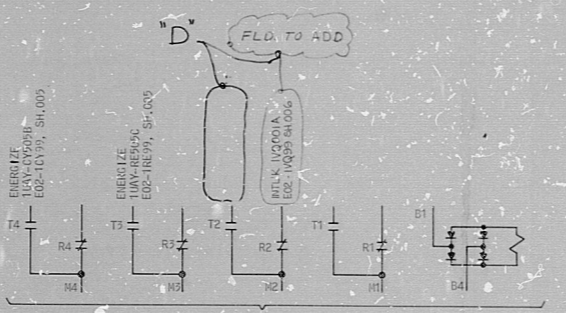
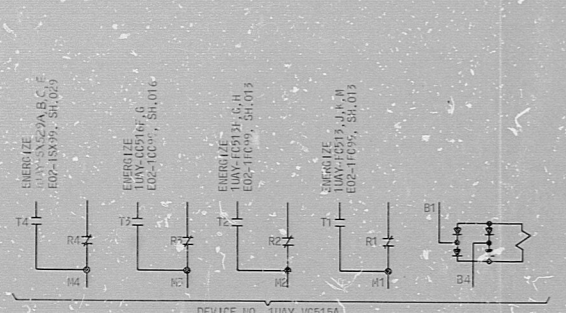
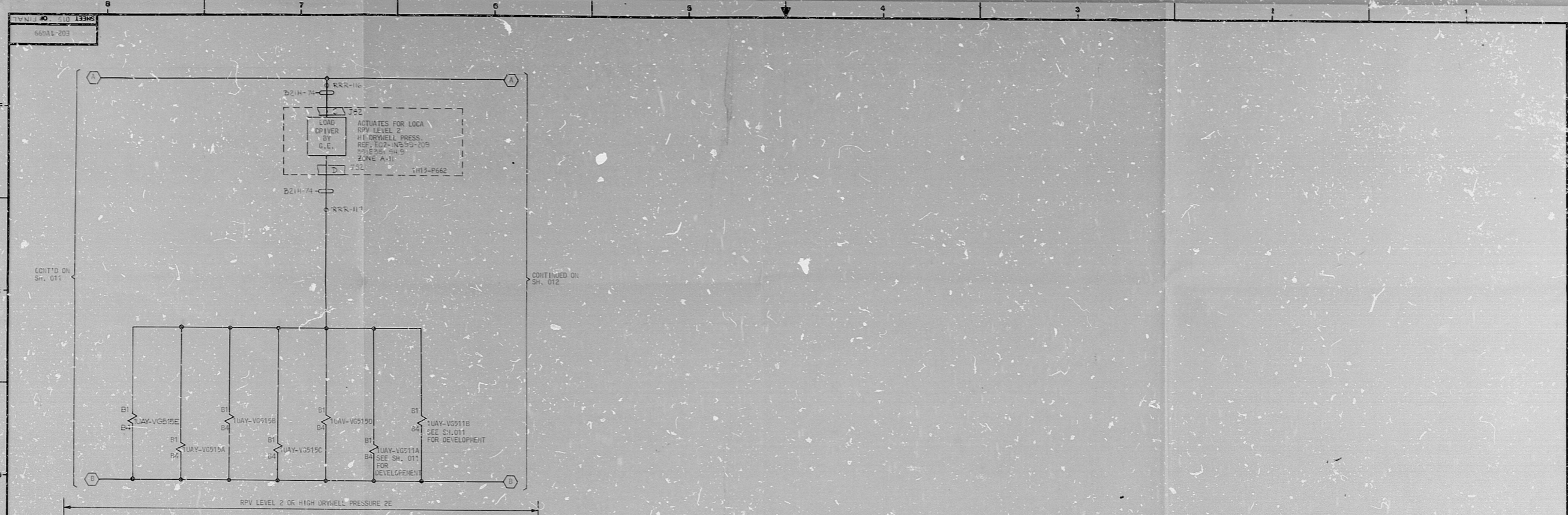
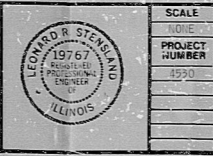


34

34



DRAWING RELEASE RECORD					DRAWING RELEASE RECORD										
REV	DATE	FIELD	PREPARED	REVIEWED	APPROVED	PURPOSE	FILM	REV	DATE	FIELD	PREPARED	REVIEWED	APPROVED	PURPOSE	FILM



LINE CODE USED: B21H-74

NUCLEAR SAFETY RELATED EQUIPMENT IS SHOWN ON THIS DRAWING.
FOR SAFETY CLASSIFICATION - SEE EQUIPMENT, VALVE OR INSTRUMENT LISTS

SCHEMATIC DIAGRAM
STANDBY GAS TREATMENT SYSTEM (VG)
RPV LEVEL 2 OR HIGH DRYWELL PRESS. 2E
CLUFTON POWER STATION UNIT 1
ILLINOIS POWER COMPANY
CLUFTON, ILLINOIS

SCALE: NONE
PROJECT NUMBER: 8990

SARGENT & LUNDY
ENGINEERS
CHICAGO, ILL.

DRAWING NO. E02-1V599
REV. D
SHEET 015 OF 015

34

34

RIDS

0202) 0202

