

11

11

8.5

8.5

11

17

11

11

8.5

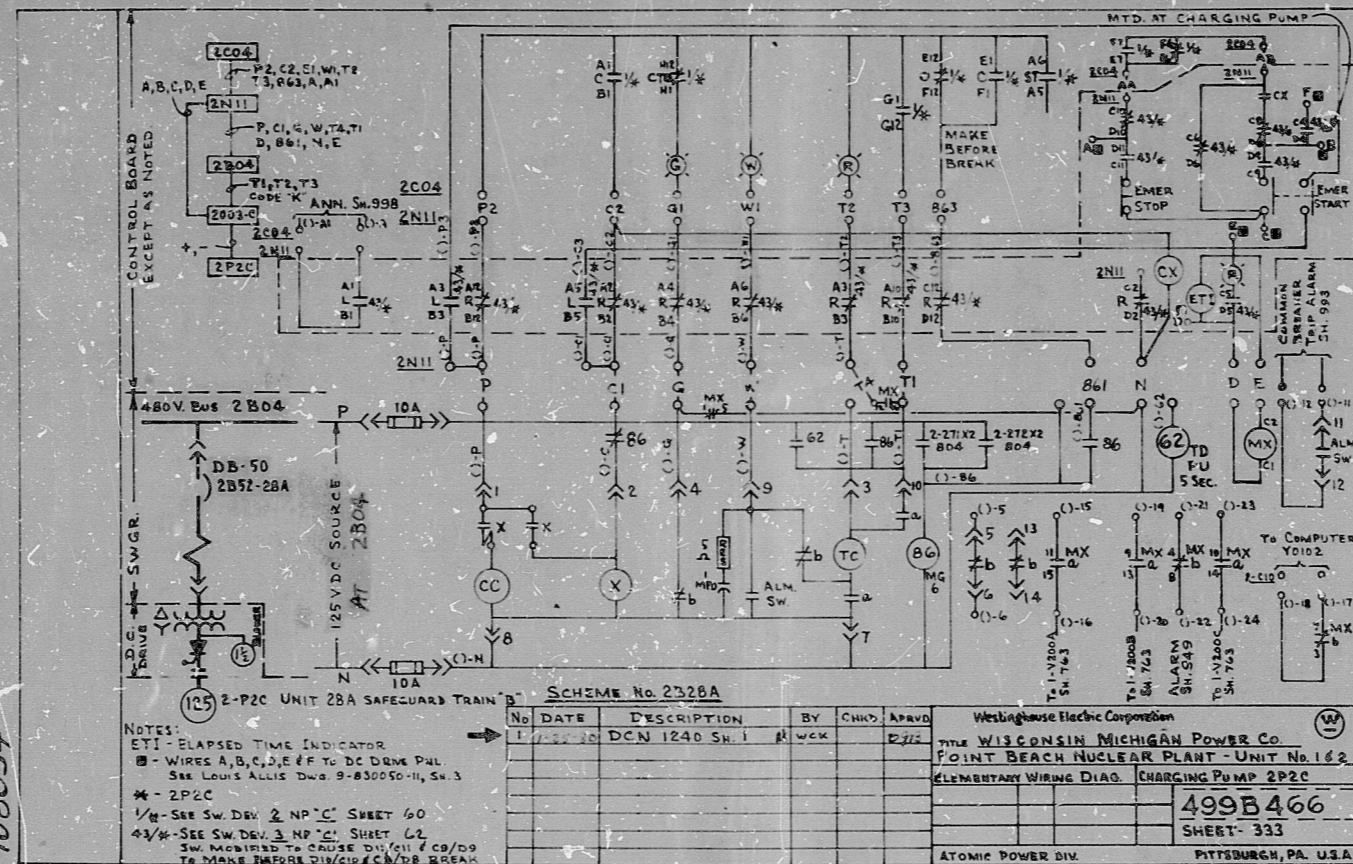
8.5

11

17

- NOTES: (1) CONTACTS (A12-B12)(A-B2)(A4-B4)(A6-B6)(A8-B8)(A10-B10) (C12-D12) WILL BE OPEN WHEN LOCAL-REMOTE SWITCH IS IN LOCAL POSITION
- (2) SHORTING OF WIRE C2 TO GROUND IN 2C04 WILL NOT CAUSE THE NEGATIVE FUSE TO BLOW.

PRC
APERTURE
CARD



J. H. Oroski, Corporate Secretary
 R. P. Smith, Branch Supervisor

108034

180190811

108034

19X JAN 1980

REPRODUCTION OF THIS DRAWING IS PROHIBITED WITHOUT THE WRITTEN PERMISSION OF THE ENGINEERING DEPARTMENT.
 This is to certify that the reproduction is a true and correct reproduction of the original drawing as shown to the undersigned and that it has been made in the ordinary course of business and that the undersigned has no knowledge of any other copies of this drawing.
 Prepared by: *J. H. Oroski*
 Checked: *J. H. Oroski*

RIDS

8210190811

