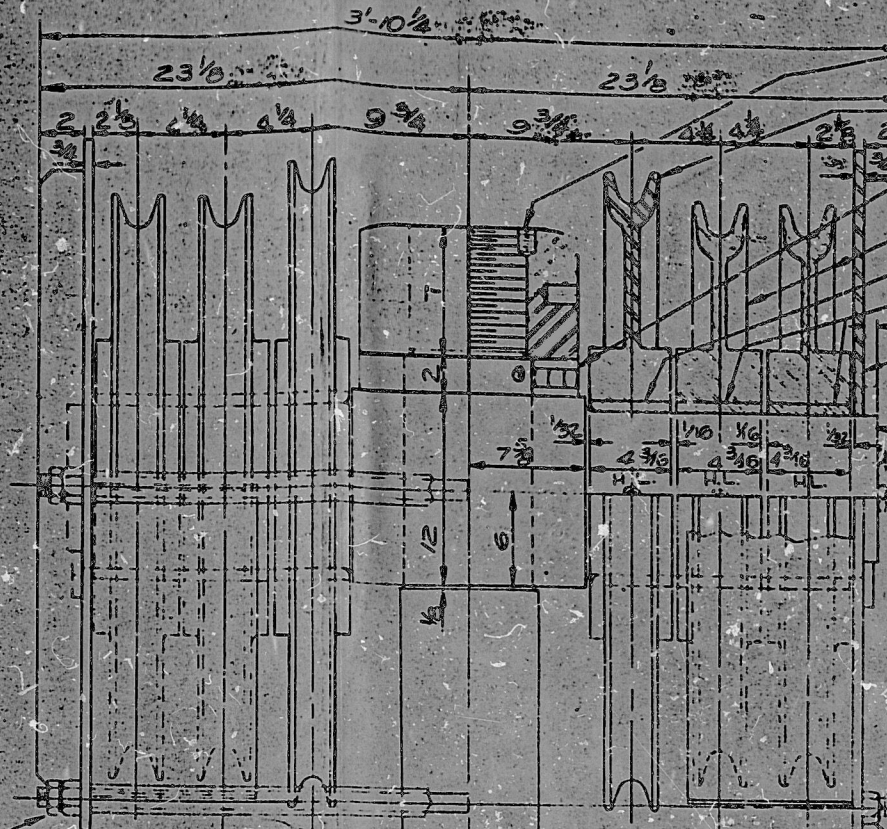
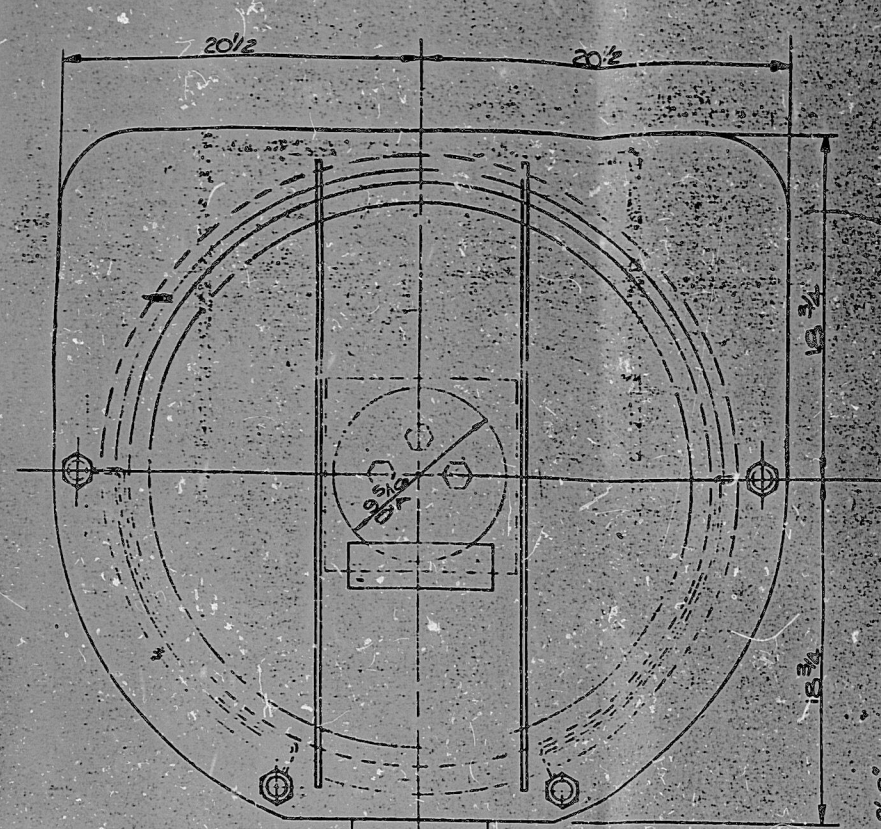


7-49576



- HOOK NUT DRG 12-35511-H WITH T-34X1 SOCKET HD SET SCREW
- 33" PD SHEAVE DRG (AA)
- THRUST BEARING (AE)
- 30" PD SHEAVE DRG (AB)
- BRONZOID BUSHING DRG 12-55052-S
- BRONZOID BUSHINGS DRG 12-55052-R
- BLOCK HOUSING DRG 5-61364
- SWIVEL DRG (AC)
- 1/4 HYD ALEMITE FITTINGS 1627B SEE (AD) IF REQ'D

1" HEX NUT & JAM NUT

1" HEX NUT

HOOK DRG 5-55255-G

7/16 DIA. EYE

EST TOTAL BLOCK WGT. - 8225

DESCRIPTION: **Auxiliary BLDG. CRANE**

FLOW DIAG INSTR NO. _____

AEPC NO. **DC112cmH-117-717-002**

DATE RCVD **6-29-84** ORDER OR CONTRACT NO. _____

| DATE | BY | RTR DATE | RTR TO |
|---------|-----|----------|--------|
| 6-29-84 | TGM | | |

10 Control Services _____

COMMENTS / DISPOSITION

APPROVED IN GENERAL _____

APPROVED EXCEPT AS NOTED _____

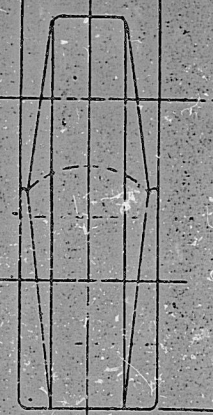
NOT APPROVED _____

FOR REFERENCE ONLY _____

NOT APPLICABLE _____

| AE | CE | EE | M.HOL | EPD | ESD | MD | SD |
|----|----|----|-------|-----|-----|----|----|
| | | | | | | | |

REVIEWED BY: **TGM** DATE: **6/23/84**



NOTE: - ON SYM. C, "AE" WAS CHANGED FROM A BRONZOID THRUST BRG. TO A STAINLESS STL. ROLLER THRUST BEARING ON REQ'N 77358-5/84. 1" THICK SPACER MUST BE REMOVED FROM NUT (GRIND TACK WELD)

30 TON LIFTING EYE S-63056 WITH NUT-USED FOR ONE TIME CONSTRUCTION LIFT. SEE NOTE ON G/A U-61740 FOR ADDITIONAL DATA.

| | | | | | | |
|------|--------------|--------------|----------|----|----|---|
| SYM. | AA | AB | AC | AD | AE | |
| | (33" SHEAVE) | (30" SHEAVE) | (SWIVEL) | | | |
| | | | | | | REQ'D (REMARKS) |
| | | | | | | DF FROM BRG. CO. STAINLESS STL. ROLLER THRUST BEARING (EQUIV. 70-TP131) |
| | | | | | | REMARKS |
| | | | | | | SEE TROLLEY/A U-61740 FOR LUBR INSTRUCTIONS DURING & AFTER CONSTRUCTION PERIOD. |
| | | | | | | DATE CHG APP |

REPRODUCED FROM T-48773

84712

| | | |
|---|---------|--|
| 1 | 7-23-69 | THIS DRAWING IS THE PROPERTY OF THE WHITING CORPORATION AND IS ISSUED ONLY UPON THE UNDERSTANDING THAT IT BE USED CONFIDENTIALLY AND NOT DISSEMINATED, AND IN NO WAY TO THE DISADVANTAGE OR DETRIMENT OF THE WHITING CORPORATION. THIS DRAWING IS SUBJECT TO RECALL. |
| 2 | 5-7-80 | (BRONZOID THRUST BEARING & WASHER WAS SHOWN) (ORIGIN S.S. BRG. WAS NOT SHOWN) |
| 3 | 6-13-84 | (ADDED) RAM |

WHITING CORPORATION
WELLAND ONTARIO
HARVEY ILLINOIS
NORWALK CALIFORNIA

TITLE: **30 TON OPEN BLOCK APERTURE**
REPORTS: **BORE**

DATE: **7-23-69** SCALE: **2:1 ONE FT**
APPROVAL: **JRS JCS**

T-49576

TI APERTURE CARD **8509190074**

PDR RIDS

8509190074

