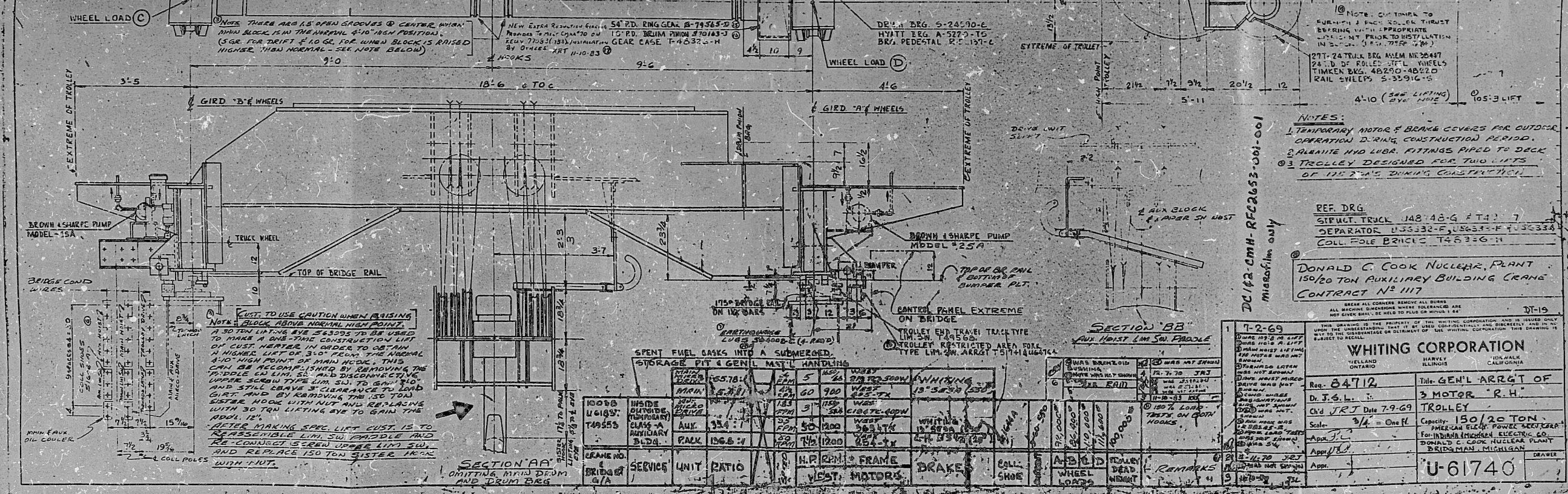
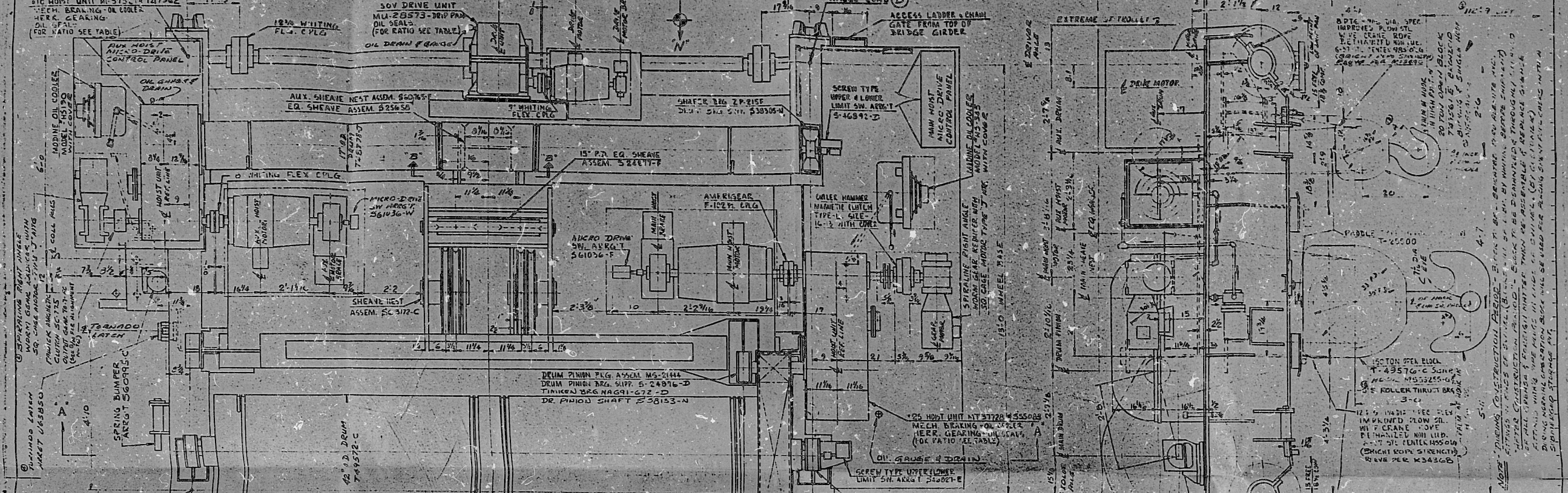


U-61740-1



**NOTES:**  
 1. TEMPORARY MOTOR & BRACKETS FOR OUTSIDE OPERATION 2. RING CONSTRUCTION PERIOD.  
 3. SHEAR AND WELD FITTINGS APPLIED TO DECK  
 4. TROLLEY DESIGNED FOR TWO LIFTS OF 150 TONS DURING CONSTRUCTION.

REF. DRG.  
 STURTEVANT 142-42-G & T-1-7  
 SEPARATOR U-35330-F, U-35331-F, U-35332-F  
 COLL. FOLE BRACKETS T-4630-G-H

DONALD C. COOK NUCLEAR PLANT  
 150/20 TON AUXILIARY BUILDING CRANE  
 CONTRACT N° 1117

CRANE NO.	SERVICE	UNIT	RATIO	H.P. OR H.P. FRAME	VEST. MOTORS	BRACKETS	COLL. SHOES	A-B-L-D WHEEL LOADS	TROLLEY WEAR HEIGHT	REMARKS
10005	INSIDE									
U-6193	INSIDE									
T-4955	INSIDE									
	AUX.									
	PACK									

TI  
 APERTURE  
 CARD

8509190071

PDR RIDS

8509190071

