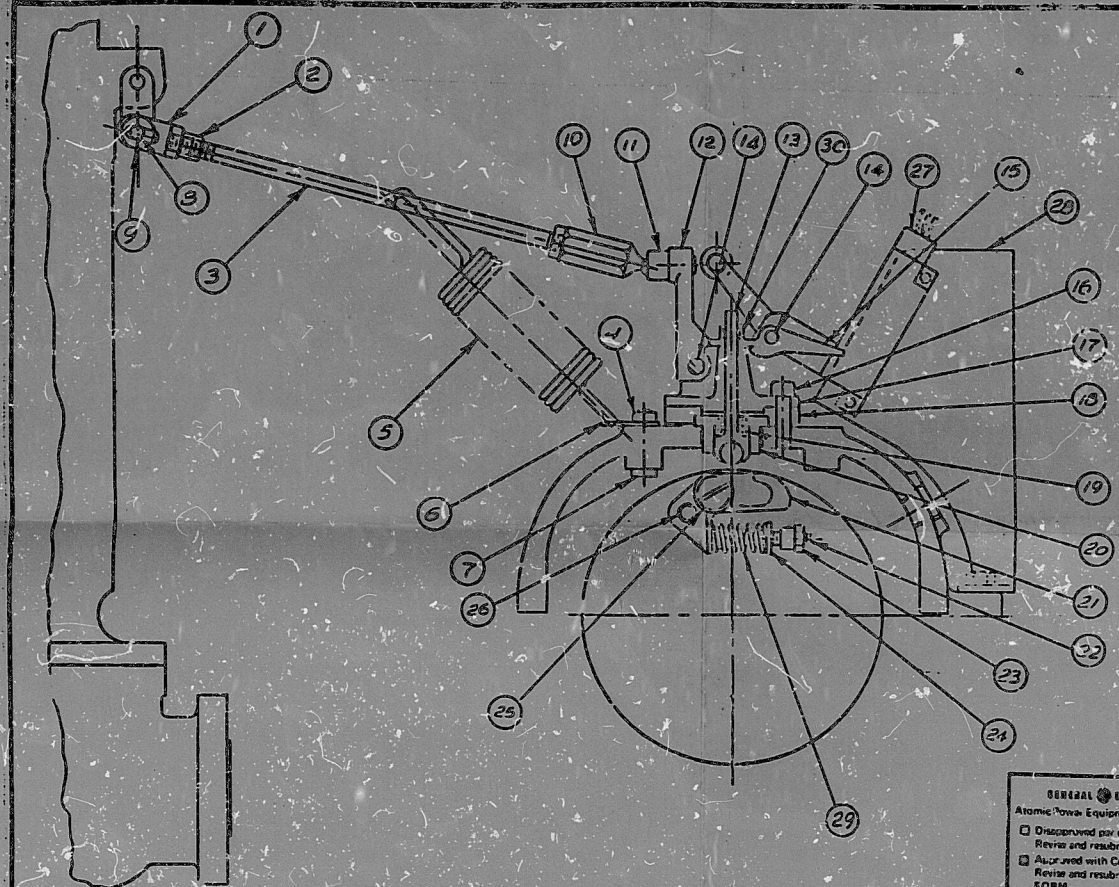


65638 B

65638 B



No.	NAME OF PARTS
1	ROD END
2	3/8 NUT
3	EMERG. CONN. ROD
4	3/8 NUT
5	SPRING
6	EMERG. SPRING HOLDER
7	3/8 HEX. HEAD BOLT
8	ROD END PIN
9	ROD END WASHER
10	BALL ROD END
11	BALL SOCKET
12	EMERG. HEAD LEVER
13	TAPPET & BALL
14	TRIP LEVER PIN
15	TRIP LEVER
16	SHUTTLE BAR SOC. HEAD
17	HEAD BRACKET
18	SPACE COLLAR
19	COMP. SPRING
20	EMERG. TAPPET GUIDE
21	EMERG. GOV. WEIGHT
22	EMERG. SPRING ADJ. STUD
23	SPRING NUT
24	EMERG. SPRING SEAT
25	EMERG. GOV. WEIGHT STOP PIN
26	EMERG. GOV. WEIGHT STOP PIN
27	MICRO SWITCH
28	BRACKET
29	EMERG. WEIGHT SPRING
30	EMERG. TAPPET NUT

DIMENSIONAL TOLERANCES UNLESS OTHERWISE SPECIFIED
 TOLERANCE ON FRACTIONS FOR MACHINED SURFACES
 0 TO 1/8" ± .005
 OVER 1/8" TO 1" ± .010
 OVER 1" TO 2" ± .015
 OVER 2" TO 3" ± .020
 BEARING HOLES TOLERANCE IS ± .001
 BEARING SURFACES TO HAVE A RADIUS OF 3/64" UNLESS OTHERWISE SPECIFIED.
 ALL SURFACES UNLESS OTHERWISE SPECIFIED TO BE FINISHED TO A SURFACE FINISH OF 125.

FILE R.C.I.C.
TYPE-GS
OVER SPEED TRIP
 SCALE NONE DATE 9-16-17
 THE TERRY STEAM TURBINE CO. DRAWN BY
 WINDSOR, CONN. U.S.A. CHECKED BY
 APPROVED BY

65638 B A
 COPY 4 TAPPET MECH
 ASSEMBLED INTO EPA
 CASE FOR SERIAL NO. T
 1231 NOV 15-14-70

GENERAL ELECTRIC
 Atomic Power Equipment Department
 Disapproved per comments.
 Review and resubmit for approval.
 Approved with Comments.
 Review and resubmit IN FINAL FORM.
 Approved. No further action required.
 Approved. Submit final copy.
 Cancelled. No further action required.
 Reviewed by *[Signature]*
 Date *11/15/70*
 VPP No. *2057-118-2*

8507310210

TI
 APERTURE CARD
 No On
 Signature Card
 TI
 APERTURE
 CARD

PDR RIDS

8507310210

