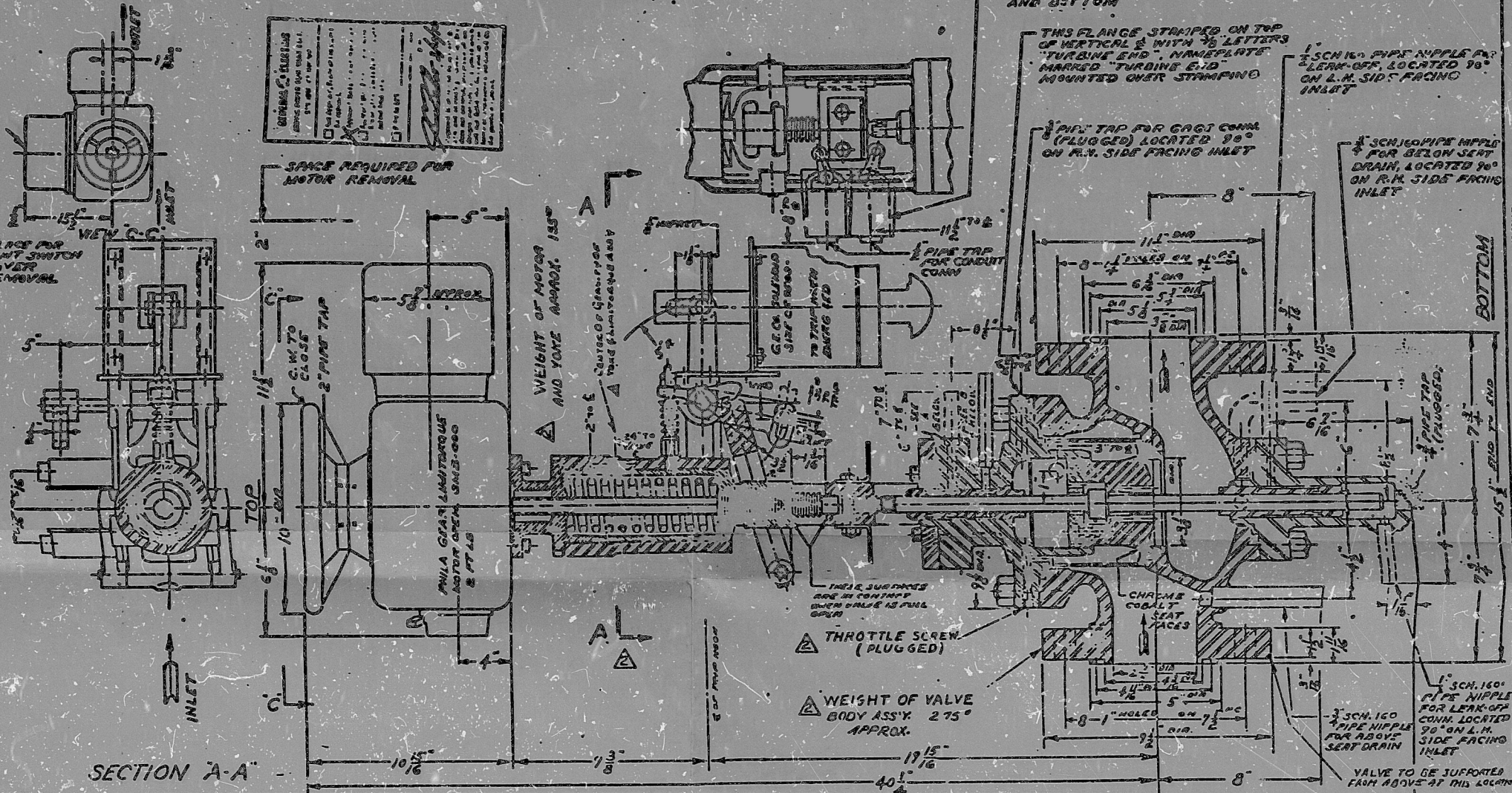


REV	BY	DATE	DESCRIPTION	APPROVED	DESIGN	CHECKED	DATE
1	TERRY STEAM TURBINE



NOTE:
HEADS ON DRAINS AND LEAK-OFFS
NOT TO BE CUT OFF. THEY WILL BE
USED BY TERRY FOR THEIR TEST
AND CUT OFF IN FIELD

NOTE:
ASSEMBLE AS PER
SECTION "A-A"

* - 1/2" SCH. 160 PIPE NIPPLE FOR LEAK-OFF
CONN LOCATED 90° ON L.H. SIDE
FACING INLET
B - 1/2" SCH. 160 PIPE NIPPLE FOR LEAK-OFF
CONN.

COMPLETE WEIGHT +30' APPROX.

2757-68-2

PERSONS CHARGED
WITH VIOLATION
OF THIS ACT
OR ANY OTHER
LAW SHALL BE
PUNISHED AS
FOLLOWS:

ONE REVISED IN
ACCORDANCE
WITH CUSTOMER
REQ. PRINT.

ASSEMBLY DRAWING
3" X 4" TOP VEH. THR. TRIP VALVE
3" INLET & 4" OUTLET
USA '63 STD. FLGS & DRILLING 900# W.S.P.

8900
67-264
HG901037V
7-17-67
N.T.S.
67-XE-41

SCHUTTE & KOERTING CO.
MANUFACTURING ENGINEERS
CORNWELLS HEIGHTS 6765 COUNTY, PENNA.

67-XE-42

8507310208

TI
APERTURE CARD
TI
APERTURE
CARD

PDR RIDS

8507310208

