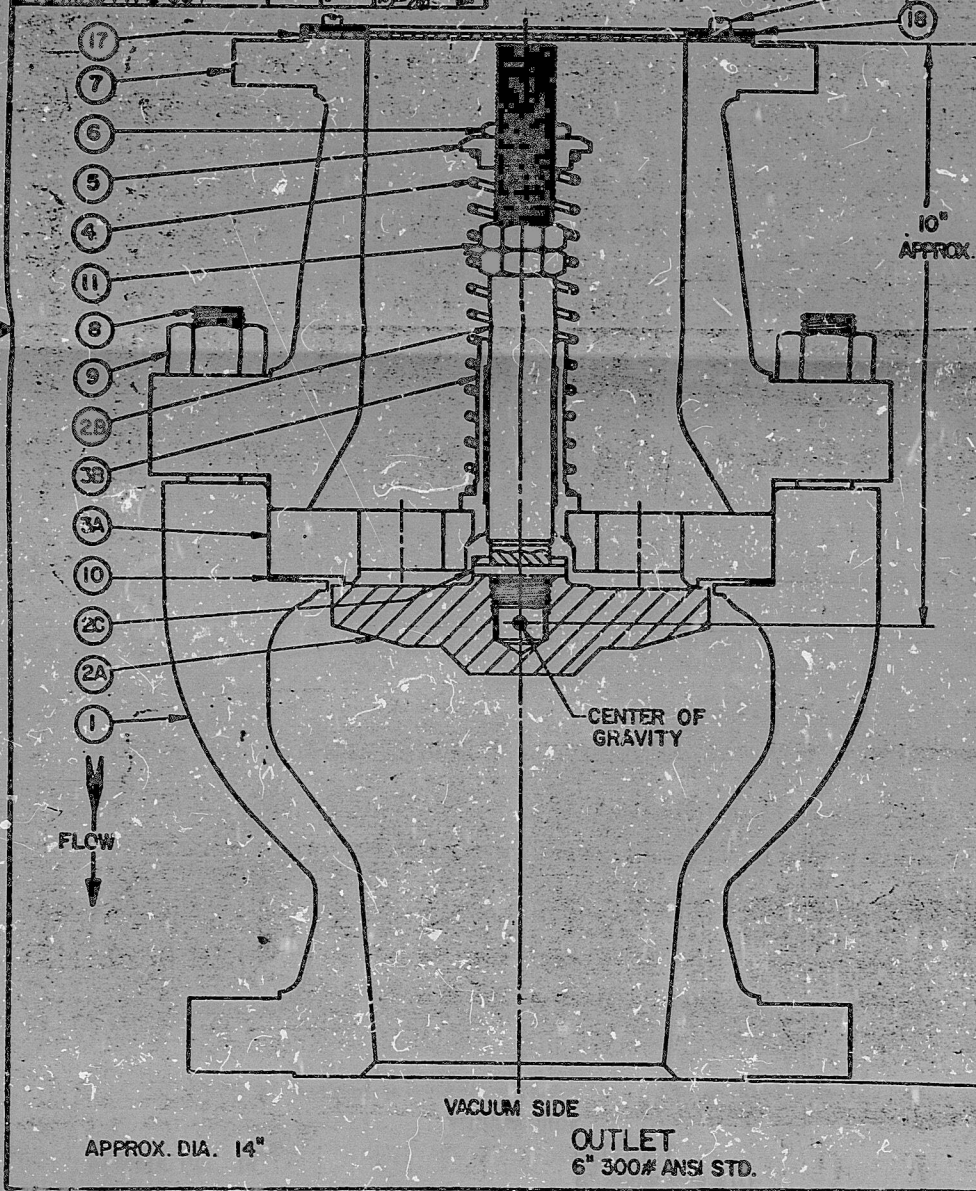


REV	DESCRIPTION	BY	CHK	APPROVED	REV	DESCRIPTION	BY	CHK	APPROVED
	WAS 15-65N-422-65				F	DESIGN PRESS WAS 800 HYDROSTATIC PRESS WAS 750	BCH		
A	ADDED PC NOS 12, 13, 14, 15, 16 - ADDED NOTE 5 & SUB-ASSY WERE - INLET - AIR - OUTLET - N2, INLET TEMP WAS 340 PC NO. 10 - QTY WAS 1 PC NO. 11 WAS RETAINING RING.	KM			G	REVISED TAG NO. CHART	WD		
B	PC NOS 2, 3 WERE CFB, PC NO. 5 WAS 304 LGT. WAS 1 1/4"	KM			H	ADDED PC NOS 17, 18 & 19			
C	PC NOS 2, 3 MAT'L WAS ASME SA351 GR. CFB, PC NO. 10 QTY. WAS 2, REMOVED PC NO. 12.	RB							
D	REDESIGNED	RB							
	PC MAT'L SPEC. WAS TYPE 304	LAL							



PC NO.	DESCRIPTION	QTY	MATERIAL	MAT'L SPEC.	REF. NOTES	REMARKS
1	BODY	1	CARBON STEEL	ASME SA216 GR. WCB	2, 3	
2	DISC	1	SST	ASME SA240 TYPE 316L	1, 2, 3	
3	STEM	1		ASME SA504 TYPE 630	1, 2, 3, 6	
4	GROOVE PIN	1		COMMERCIAL	1	
5	CAGE	1		ASME SA240 TYPE 316L	1, 2, 3	
6	GUIDE	1		COMMERCIAL	1	
7	SPRING	1		ASTM A313 TYPE 316	1, 2, 3	
8	WASHER	1		ASME SA479 TYPE 316L	1, 2, 3	
9	LOCKNUT	1		COMMERCIAL		
10	BONNET	1	CARBON STEEL	ASME SA216 GR. WCB	2, 3	
11	STUD	12	ALLOY STEEL	ASME SA193 GR. 57	2, 3	
12	NUT	12	STEEL	ASME SA193 GR. 2H	2, 3	
13	GASKET	1	ASBESTOS	COMMERCIAL	1	1/16 THICK SHEET
14	RETAINING NUT	2	SST			
15	DATA PLATE	1	SST	COMMERCIAL		
16	NAMEPLATE	1				NOT SHOWN
17	IDENTIFICATION PLATE	1				NOT SHOWN
18	DRIVE SCREW	6				NOT SHOWN
19	WIRE MESH SCREEN	1			7	20X20-009 WIRE
20	RETAINING RING	1	SST & GRAPHITE	GRAFOI	7	1/16 THICK
21	SCREW	12	STEEL	COMMERCIAL	7	

NOTES:
 1. RECOMMENDED SPARE PIECE.
 2. PRESSURE RETAINING PIECE.
 3. CERTIFICATION OF MATERIAL AND NON-DESTRUCTIVE TESTING IN ACCORDANCE WITH Crosby QAI-32/53.
 4. VALVE MUST BE MOUNTED VERTICALLY AS SHOWN FOR PROPER OPERATION.
 5. Cv = 432
 6. PRECIPITATION HARDENED AT 1075°F
 7. PART INSTALLED IN FIELD BY CUSTOMER ON VALVES SHIPPED PRIOR TO 11/3/82

DESIGN CONDITIONS			FLOWING CONDITIONS			PSIG VACUUM		OUTLET SIDE HYDROSTATIC TEST PRESSURE-PSIG
MEDIUM	PRESS. PSIG	TEMP. °F	MEDIUM	PRESSURE	TEMP. °F	SET PRESS.	MAX ACCUMULATION	
STEAM	540	435	AIR OR NITROGEN	ATMOSPHERE	100 TO 340	0.2-0.1	0.5	810

APERTURE CARD

TI

TI APERTURE CARD

10855-M/41(Q)/15-9

PUBLIC SERVICE ELECTRIC & GAS CO.
 HOPE CREEK GENERATING STATION
 UNITS 1 & 2

CROSBY VALVE & GAGE CO. ORDER NO. 10855-M-41(Q)-AC CROSBY F.O. N61264 PREPARED BY KJM 2-20-76 CHECKED BY EES 3-16-76 APPD. 4-1-76		ASME SECT III CL. 3 CROSBY VALVE & GAGE CO. WRENTHAM, MASS. 02793	
DRAWING TITLE VACUUM RELIEF VALVE		DRAWING NO. DS-C-6Q901	
WEIGHT 400 LBS. APPROX SIZE 6X6 STYLE VR ASSEMBLY NO. N60901		REV. H	

16 X

I certify that the microfilmed image contained on this microform were made in the normal and regular course of business. This is a true, full, correct and complete reproduction and replacement for and/or in lieu of original documents generated by the Bechtel group of companies.

Signed: DANNY Date: 12-29-82 Camera Type: MRGI
 Camera Operator

8507310200

PDR RIDS

850731020D

