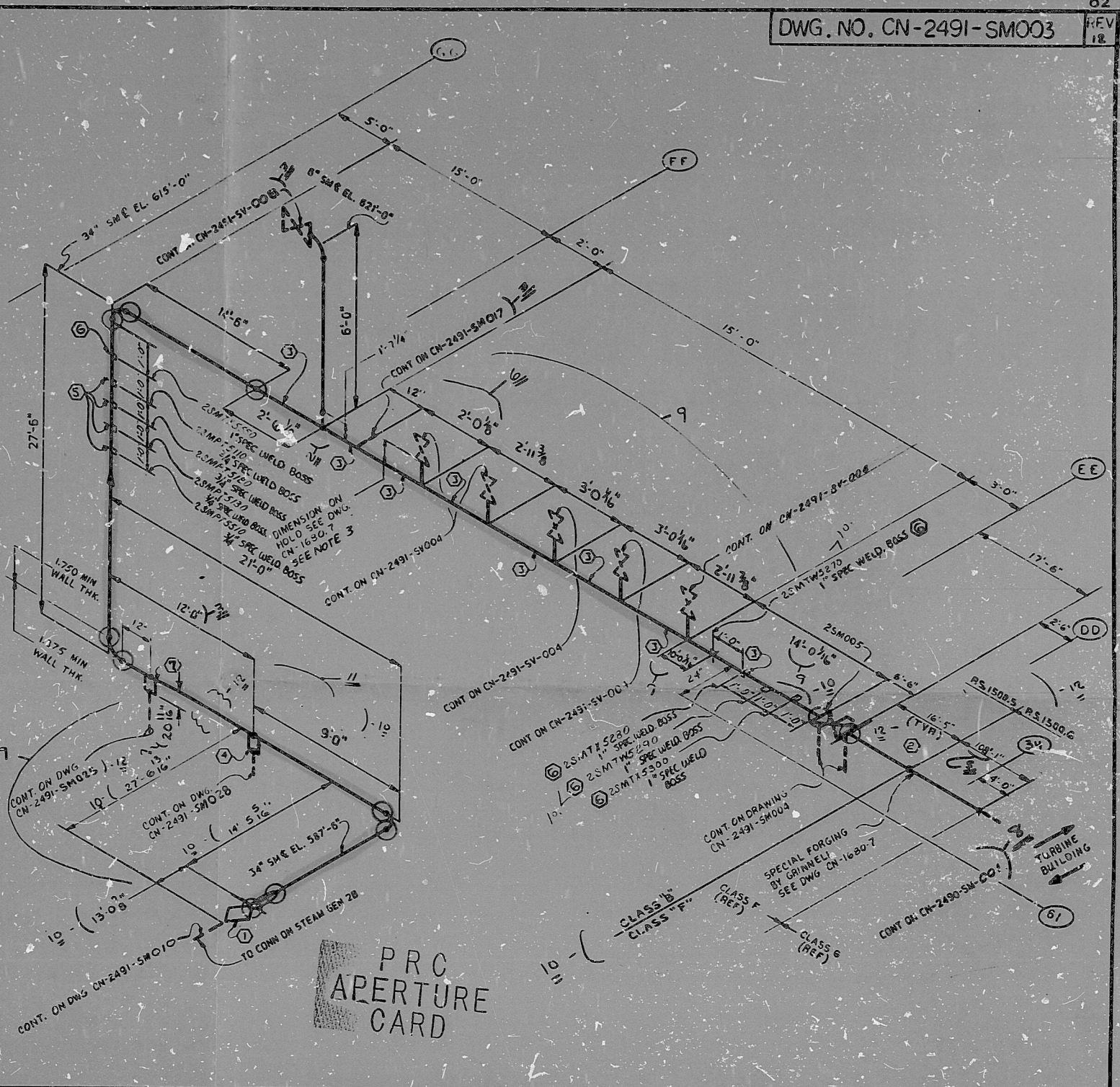


ITEM	QTY	SIZE	DESCRIPTION	CODE NO.
1			PR 1500.5	
2	36"	3/4"	PIPE CS SA192M 3/4" 1.375" MIN. W. THK.	
3	2	30"	90° ELBOW LR. RW. CS. SA192M 1.375" MIN. W. THK.	
4	1	30"	90° ELBOW LR. RW. CS. SA192M 1.375" MIN. W. THK.	
5	1	6"	PIPE CS SA192M 3/4" 1.375" MIN. W. THK.	1A4AB1F08060
6	1	8"	90° ELBOW LR. RW. CS. SA192M 1.375" MIN. W. THK.	3A1ADE1F08060
7				
8				
9				
10				
11			PS 1500.6	
12	109.5	3/4"	PIPE CS A153 CL1/HCTO EFW 1.25" MIN. WALL THK.	
13				
14				
15				
16				
17				
18				
19				
20				
21				
22				
23				
24				
25				
26				
27				
28				
29				
30				
31				
32				

MK. NO.	SPECIALS
33	1 (1) PENETRATION ASSEMBLY IN 241-34"
34	17 (2) SPECIAL ANCHOR FORGING BY GRINNELL-SEE DWG 1000-7 FOR WL. THICKNESS
35	32 (3) SPECIAL HEADER FORGING BY GRINNELL 2.375" NOM. WL.
36	1 (4) SPECIAL WELDING BOSS 2" SEE NOTE 1, PS1500.5
37	4 (5) SPECIAL WELDING BOSS 3/4" SEE NOTE 1, PS1500.5
38	5 (6) SPECIAL WELDING BOSS 1" SEE NOTE 1, PS1500.5
39	1 (7) 6" SWEEPolet - BY GRINNELL
40	
41	
42	
43	
44	

MARK NO.	ITEM NO.	DRAWING NO.	SIZE	PIPE SPEC.
35M005		04W-1202-12-001	34.00	1500.5 1500.6
				PIPE CLASS B-F
				REF. TABLE A-4



NO.	REVISION	CHRD	APP	DATE	CIVIL	ELEC	MECH	INSPECTED
12	REVISED TO CLEAR VLN 24200, 24365, 25658							
11	REV INSTRUMENTATION							
10	REVISED AS NOTED							
9	REVISED & UPDATED AS NOTED							
8	ADDED CONTINUATION REF.							
7	REVISED AS NOTED							
6	REVISED AS NOTED							
5	REVISED B/M 1 AS NOTED							
4	REVISED DIM. OF YARD PORTION OF PIPE							
3	REVISE QUANTITY OF ITEM (4) AND ADDED ITEM (7)							
2	DELETED ITEM 7 IN SPEC. COL.							
1	REVISED & REMOVED NO. D FROM B/M							
0	ORIG. RELEASED FOR CONSTRUCTION							

NO.	REVISION	CHRD	APP	DATE	CIVIL	ELEC	MECH	INSPECTED
9	REVISED & UPDATED AS NOTED							
8	ADDED CONTINUATION REF.							
7	REVISED AS NOTED							
6	REVISED AS NOTED							
5	REVISED B/M 1 AS NOTED							
4	REVISED DIM. OF YARD PORTION OF PIPE							
3	REVISE QUANTITY OF ITEM (4) AND ADDED ITEM (7)							
2	DELETED ITEM 7 IN SPEC. COL.							
1	REVISED & REMOVED NO. D FROM B/M							
0	ORIG. RELEASED FOR CONSTRUCTION							

NUCLEAR SAFETY RELATED  
 DUKE POWER COMPANY  
 CATAWBA NUCLEAR STATION UNIT 2  
 REACTOR BUILDING (DOGHOUSE)  
 MAIN STEAM SYSTEM (SM)  
 2B  
 DWG. NO. CN-2491-SM003 REV. 12

○ WELDS TO BE ISI'D  
 ○ LONGITUDINAL WELD TO BE INSPECTED

MAIN STEAM BREAK EXCLUSION AREA  
 8210050385



RIDS

8210050385

