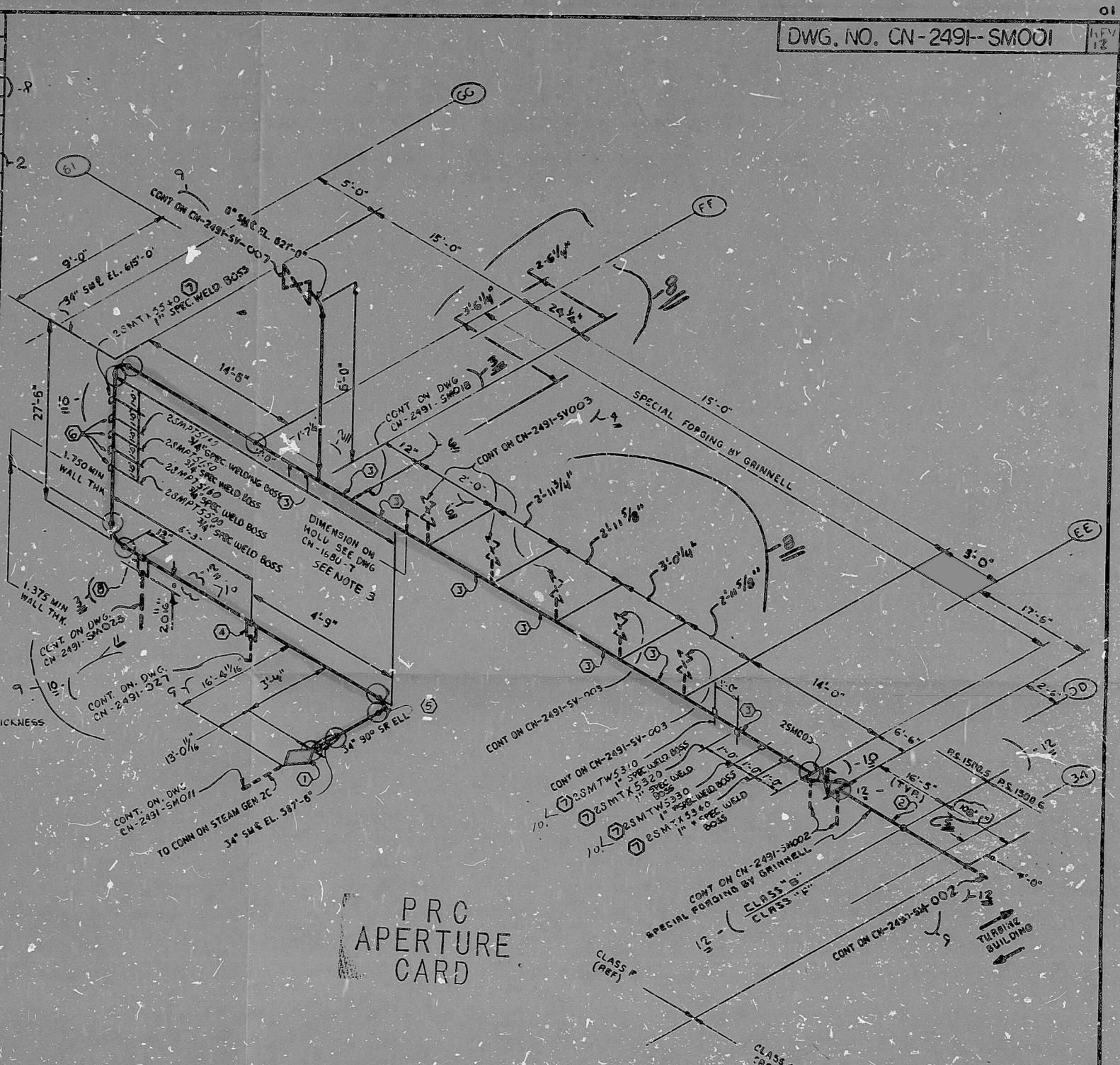


ITEM	QTY	SIZE	DESCRIPTION	CODE NO.
1				
2	16	34"	PIPE CS SA192/R 5MLG 1.375" MIN. WALL THK.	
3	1	34"	90° ELBOW L.R. BU. CS SA233/WPC 1.375" WALL THK.	
4	1	34"	90° ELBOW L.R. BU. CS SA233/WPC 1.375" WALL THK.	
5	6	6"	PIPE CS SA192/R 5MLG 5/8" SCH. 80	1A42B1E-066
6				
7	1	8"	90° ELBOW L.R. BU. CS A234/WPC 5/8" SCH. 80	313DE1FB-060
8	42	34"	PIPE CS SA192/R 5MLG 1.375" MIN. WALL THK.	
9				
10				
11				
12	104.5	34"	PIPE CS A158 C11/2C70 EFW 1.25" MIN WALL THK.	
13				
14				
15				
16				
17				
18				
19				
20				
21				
22				
23				
24				
25				
26				
27				
28				
29				
30				
31				
32				

MR. NO.	DESCRIPTION
33	1 PENETRATION ASSY M353 34"
34	17 SPECIAL ANCHOR FORGING BY GRINNELL-SEE DWG 1680-7 FOR N.L. THICKNESS
35	32 SPECIAL HEADER FORGING BY GRINNELL 2.375" NOM. N.L.
36	4 SPECIAL WELDING BOSS PS1500.5 SEE NOTE 1, 2"
37	1 90° ELL. SA 8W CS SA233/WPC 1.375" WALL THK. PS1500.5
38	4 SPECIAL WELDING BOSS PS1500.5, SEE NOTE 1, 3/4"
39	5 SPECIAL WELDING BOSS PS1500.5, SEE NOTE 1, 1"
40	1 6" SWEEPolet BY GRINNELL
41	
42	
43	
44	

MARK NO.	ITEM NO.	DRAWING NO.	SIZE	PIPE SPEC.
25M003		CN-1205-12-001	34, 60	1500.5 1500.6
				PIPE CLASS B, F
				REF. TABLE A-4



NO.	REVISION	CHKD	APP	DATE	CIVIL	ELEC	MECH	INSPECTED
9	REVISED & UPDATED AS NOTED			11-23-78				
8	REVISED PER GRINNELL AS BUILT INFO			10-18-78				
7	REVISED AS NOTED			7-19-78				
6	REVISED AS NOTED			4-11-78				
5	REVISED DIM F AS NOTED			3-17-78				
4	REVISED DIM OF YARD PORTION OF PIPE AS NOTED			12-78				
3	REVISED DIM 4 QUART, ADDED E, & AS NOTED			12-67				
2	DELETED ITEM 9 IN SPEC. CCL			12-67				
1	REVISED & REMOVED HOLD FROM 3/M			12-77				
ORIG	RELEASED FOR CONSTRUCTION							

NUCLEAR SAFETY RELATED DUKE POWER COMPANY CATAWBA NUCLEAR STATION REACTOR BUILDING (DOGHOUSE) MAIN STEAM SYSTEM (SM) UNIT 2 2C			
DESIGNER	DATE	INSP. DRAWN	DATE
DRAWN	DATE	INSP. CHECKED	DATE
CHECKED	DATE	APPR.	DATE
DWG. NO. CN-249I-SM001			REV. 12

○ WELDS TO BE ISI ✓
 ○ LONGITUDINAL WELD TO BE INSPECTED

MAIN STEAM BREAK EXCLUSION AREA
 8210050373

RIPS

8210050373

