

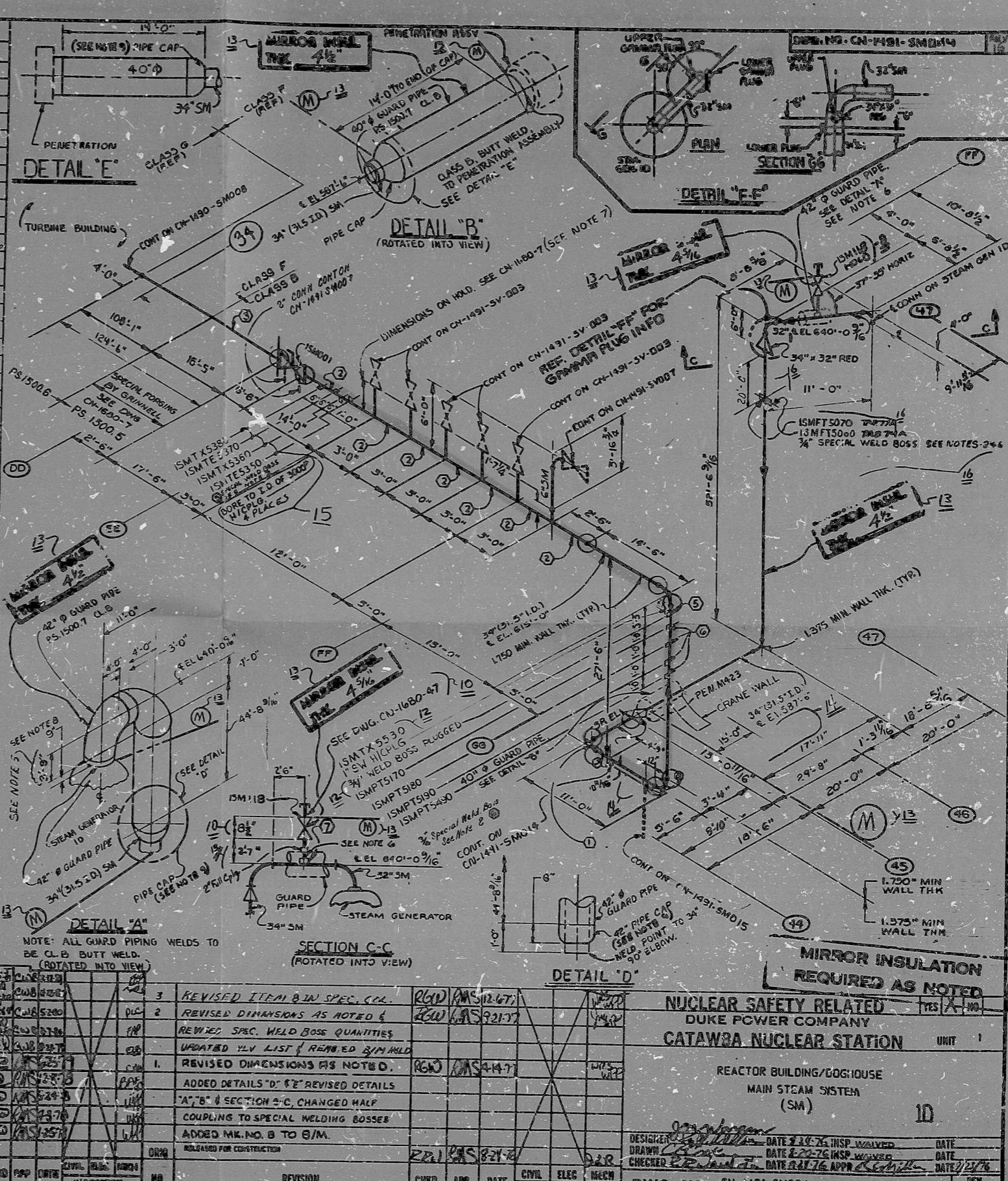
ITEM	QTY	SIZE	DESCRIPTION	CODE NO.
1	17	32	PIPE CS SA106C SMLS/L375 MIN	
2	4	6	PIPE CS SA106/B SMLS SCH 80	M448F00000
3	2	32	90 ELL LR BW CS SA234/WPC SMLS L375 MIN	
4	1	6	90 ELL LR BW CS SA234/WPC SMLS/EFW SCH 80	3J308F00000
5	126	34	PIPE CS SA106/C SMLS/SEE SPEC FOR WT	
6	1	2"	NIPPLE CS SA576/TP304 SMLS SCH 80 6" LONG	1B4AD110020
7	2	2"	NIPPLE CS SA106/B SMLS SCH 80 12" LONG	1A4AD110020
8	1	2"	PIPE CAP CS SA105/3A00 LB SCR.D	3M1NE466020
9	3	34"	90° ELBOW LR BW CS SA234/WPC SMLS FOR WT	
10	1		CORNER BOW CS SA234/WPC SMLS 24" X 24" X 1/2" X 3/16" PER WT	
11	1		PLATE CS SA105/3000 LB	3M1FMT00000
12	1		W/PLG CS SA105/6000 LB	
13				
14				
15			P.S. 1500.7	
16	45	42	PIPE CS SA155 CL 1/KC70 EFW 1.5" NOM	
17	2	42	90° ELL SA, C.S. BW SMLS/EFW SA234 1.5" NOM	
18	14	40	PIPE CS SA155 CL 1/KC70 EFW 1.437" NOM	
19	1	42	PIPE CAP BW CS SA234 SMLS/EFW 1.5" NOM	
20	1	40	PIPE CAP BW CS SA234 SMLS/EFW 1.437" NOM	
21				
22				
23				
24			P.S. 1500.7	
25	01	34	PIPE CS SA155 CL 1/KC70 EFW 1.26" MIN WT	
26				
27				
28				
29				
30				
31				
32				

MARK. NO.	ITEM NO.	DESCRIPTION
33	1	34" 90° ELL SA, BW CS SA234/WPC SMLS 1.375 MIN WALL
34	1	SPECIAL FORGING BY GRINNELL
35	1	SPECIAL FORGING BY GRINNELL
36	1	PENETRATION ASSY. M-423
37	3	SPECIAL WELDING BOSS, 1 1/2" SEE NOTE 2, P.S. 1500.5
38	6	SPECIAL WELDING BOSS, 3/4" SEE NOTE 2, P.S. 1500.5
39	2	SPECIAL WELDING BOSS 2" SEE NOTE 2, P.S. 1500.5
40	1	6" SWEEPLET BY GRINNELL
41	1	SPECIAL WELDING BOSS 1 1/2" SA182/304 6000 LB. SEE NOTE 2, P.S. 1500.5
42		
43		
44		

MARK. NO.	ITEM NO.	DRAWING NO.	SIZE	PIPE SPEC.
15001		CNR-1205.12-001	34.00	1500.6
3M118		CNM-1205.01-000	2.00	PIPE CLASS 5, F

NO.	REVISION	ENGR.	APP.	DATE	NO.	REVISION	ENGR.	APP.	DATE
14	REV. INSTR. AS PER V.M.# 18330				13	ADDED MIRROR INCL. REV. PER V.M. 15,573			
15	REV. AS PER V.M.# 18308				12	REV. INSTR. PER V.M.# 18306			
					11	ADDED INSTRUMENTATION			
					10	REVISED TO CLEAR W.A. 0753			
					9	REVISED AS NOTED			
					8	REVISED AS NOTED, CHANGED W.A. 3674			
					7	ADDED DR FOR ITEM 6			
					6	ADDED COMP. NOTE AT W.A. 15001 & ADDED NOTE 10			
					5	REVISED AS NOTED			
					4	REVISED AS NOTED, REVISED W.A. 15001 & ADDED NOTE 10			

NO.	REVISION	ENGR.	APP.	DATE	NO.	REVISION	ENGR.	APP.	DATE
14	REV. INSTR. AS PER V.M.# 14470				13	ADDED MIRROR INCL. REV. PER V.M. 15,573			
15	REV. AS PER V.M.# 18308				12	REV. INSTR. PER V.M.# 18306			
					11	ADDED INSTRUMENTATION			
					10	REVISED TO CLEAR W.A. 0753			
					9	REVISED AS NOTED			
					8	REVISED AS NOTED, CHANGED W.A. 3674			
					7	ADDED DR FOR ITEM 6			
					6	ADDED COMP. NOTE AT W.A. 15001 & ADDED NOTE 10			
					5	REVISED AS NOTED			
					4	REVISED AS NOTED, REVISED W.A. 15001 & ADDED NOTE 10			



NO.	REVISION	ENGR.	APP.	DATE	NO.	REVISION	ENGR.	APP.	DATE
1	REVISED ITEM 8 IN SPEC. COLL.	RGW	MS	8-21-77	1	REVISED DIMENSIONS AS NOTED & REVISED SPEC. WELD BOSS QUANTITIES	RGW	MS	9-21-77
2	REVISED DIMENSIONS AS NOTED & REVISED SPEC. WELD BOSS QUANTITIES	RGW	MS	9-21-77	2	UPDATED WELD LIST & REVISED B/M MILD	RGW	MS	9-21-77
3	REVISED DIMENSIONS AS NOTED & REVISED SPEC. WELD BOSS QUANTITIES	RGW	MS	9-21-77	3	ADDED DIMENSIONS AS NOTED D.	RGW	MS	9-21-77
4	ADDED DIMENSIONS AS NOTED D.	RGW	MS	9-21-77	4	ADDED DETAILS 'D' & 'E' REVISED DETAILS	RGW	MS	9-21-77
5	ADDED DETAILS 'D' & 'E' REVISED DETAILS	RGW	MS	9-21-77	5	'A', 'B' & SECTION C-C, CHANGED HALF	RGW	MS	9-21-77
6	'A', 'B' & SECTION C-C, CHANGED HALF	RGW	MS	9-21-77	6	COUPLING TO SPECIAL WELDING BOSSSES	RGW	MS	9-21-77
7	COUPLING TO SPECIAL WELDING BOSSSES	RGW	MS	9-21-77	7	ADDED MK. NO. 8 TO B/M.	RGW	MS	9-21-77
8	ADDED MK. NO. 8 TO B/M.	RGW	MS	9-21-77	8	RELEASED FOR CONSTRUCTION	RGW	MS	9-21-77

O-WELDS TO BE ISI'D
 PRC APERTURE CARD
 MAIN STEAM BREAK EXCLUSION AREA
 8210050364
 DWG. NO. CN-1491-SM004
 REV. 16

RIDS

8210050364

