

ITEM	QTY	SIZE	DESCRIPTION	CODE NO.
1	1	3"	PIPE CS SA106/C SMLS/1.375 MIN	
2	4	8"	PIPE CS SA106/B SMLS SCH 80	1442B100000
3	2	3"	90° ELL LR BR CS SA234/RPC SMLS 1.375 MIN	
4	1	8"	90° ELL LR BR CS SA234/RPC SMLS 1.375 MIN	3100B-3000
5	179	3/4"	PIPE CS SA106/C SMLS/SEE SPEC FOR WT	
6	1	2"	NIPPLE CS SA106/B SMLS SCH 80 6" LONG	15MAD10B020
7	2	2"	PIPE CS SA106/B SMLS SCH 80	15MAD10B020
8	1	2"	PIPE CAP CS SA106/3000 LB ECRD	3M1HB4G00020
9	4	3/4"	90° ELL LR BR CS SA234/RPC SMLS-SEE SPEC FOR WT	
10	1		CONC RED BR CS SA234/RPC SMLS 3/4" 1.375 SPEC FOR WT	
11			PS 1500.7	
12	40	42"	PIPE C.S. SA106 CL1/KC70 EFW 1.5" NOM	
13	2	42"	90° ELL SR CS BR SMLS/EPW SA234 1.5" NOM	
14	14	40"	PIPE C.S. SA106 CL1/KC70 EFW 1.437" NOM	
15	1	42"	PIPE CAP BR CS SA234 SMLS/EPW 1.5" NOM	
16	1	40"	PIPE CAP BR CS SA234 SMLS/EPW 1.437" NOM	
17				
18				
19			PS 1500.6	
20	109	34"	PIPE C.S. A158 CL1/KC70 EFW 1.25" MIN WT	
21				
22				
23			PS 1500.5	
24	1		4" NIPPLE CS SA 106/6000 LB	
25	1		PLUG CS SA 106/3000 LB	3M1HB4G00020
26	1		FLANGE CS SA 106/3000 LB	3M1HB4G00020
27				
28				
29				
30				
31				
32				

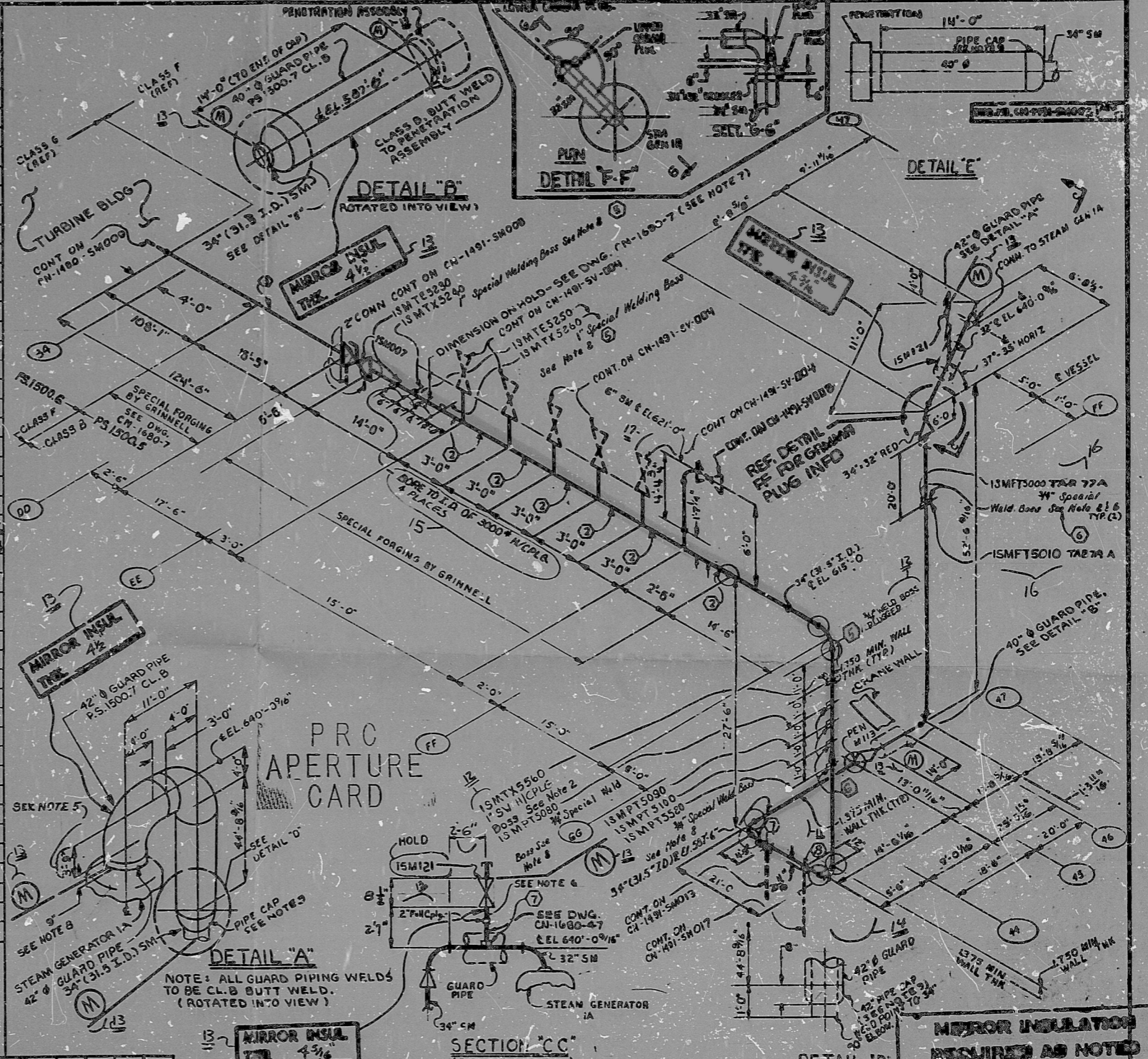
MARK NO.	SPECIALS
33	
34	1 (2) SPECIAL FORGING BY GRINNELL
35	1 (3) SPECIAL FORGING BY GRINNELL
36	1 (4) PENETRATION ASSY M-113
37	5 (5) SPECIAL WELDING BOSS, 1" SEE NOTE 2, PS 1500.5
38	6 (6) SPECIAL WELDING BOSS, 1/4" SEE NOTE 2, PS 1500.5
39	2 (7) SPECIAL WELDING BOSS, 2" SEE NOTE 2, PS 1500.5
40	1 (8) 6" SNEEPAET BY GRINNELL
41	1 (9) SPECIAL WELDING BOSS SS SA192 3/4" 6000 LB SEE NOTE 2, 3M1HB4G00020
42	
43	
44	

MARK NO.	ITEM NO.	DRAWING NO.	SIZE	PIPE SPEC.
15M007		CHN-1208-12-001	34.0	1500.6
15M021		CHN-1208-01-006	3.0	1500.5

MARK NO.	ITEM NO.	DRAWING NO.	SIZE	PIPE CLASS
17	REV. PER VN 28918			B.F
16	REV. INSTR. AS PER VN 18330			B.F
15	REV. AS PER VN 18308			B.F

MARK NO.	ITEM NO.	DRAWING NO.	SIZE	PIPE CLASS	REF. TABLE
13	ADDED MIRROR INSUL.	REV. PER VN 15, 375			R-1
12	REV. INSTR. PER VN 13306				A-1
11	ADDED INSTRUMENTATION				
10	REVISED TO CLEAR VN 8758				
9	REVISED AS NOTED				
8	REVISED AS NOTED, CLERICAL VN 85614				
7	ADDED DIM. FOR ITEM 3				
6	REVISED NOTE 10				
5	REVISED AS NOTED				
4	REVISED DIM. AS NOTED, REMOVED HOLD ON B.M.				
3	REVISED DIM. AS NOTED, CHANGED HALF COUPLING TO SPECIAL WELDING BOSS				
2	UPDATED VLV. LIST, REVISED SPEC. WELD.				
1	BOSS CALL CUTS & QUANT'S				

MARK NO.	REVISION	CHNGD	APP	DATE	MECH	NO.	REVISION	CHNGD	APP	DATE	MECH	NO.
14	REV. AS PER VN 14970											
NO	REVISION											



MARK NO.	REVISION	CHNGD	APP	DATE	CIVIL	ELEC	MECH	INSPECTED	NO.
NO	REVISION								

NUCLEAR SAFETY RELATED YES X NO

DUKE POWER COMPANY

CATAWBA NUCLEAR STATION UNIT 1

REACTOR BUILDING DOGHOUSE
MAIN STEAM SYSTEM (SM) 1R

DESIGNED BY: [Signature] DATE: 2-26-76 INSP. WAIVED DATE: []
 DRAWN BY: [Signature] DATE: 2-26-76 INSP. WAIVED DATE: []
 CHECKED BY: [Signature] DATE: 2-26-76 APPR. BY: [Signature] DATE: []

DWG. NO. CN-1431-SM003 REV. 17

○ WELDS TO BE ISI!

MAIN STEAM BREAK EXCLUSION AREA

8210050357

RIDS

8210050357

