

NOTES

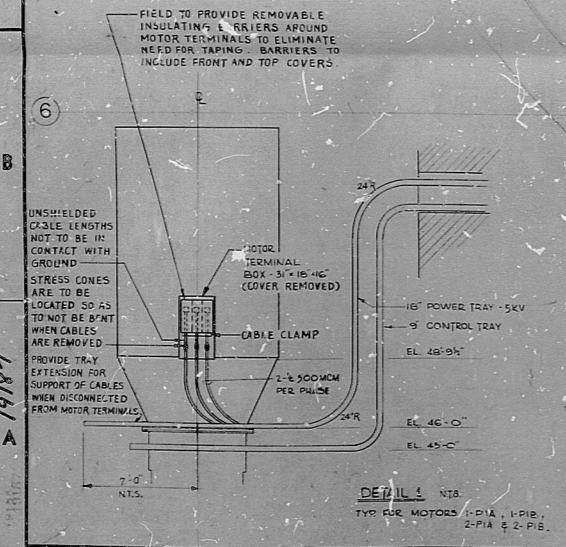
- FOR GENERAL NOTES AND REFERENCE DWGS. SEE DWG. 6118-5-102.
- FOR INSTRUMENTATION IN THIS AREA SEE DWG. E-166.
- FOR TRAY ARRANGEMENT AT CONTAINMENT LINER SEE DWG. E-124.
- VIBRATION SWITCHES ARE MOUNTED AT FAN HOUSING.

REFERENCE DRAWINGS

- E-166 ELECTRICAL LAYOUT-CONTAINMENT VESSEL EL. 46'-0" AREA 7.
- E-166 ELECTRICAL LAYOUT-CONTAINMENT VESSEL EL. 46'-0" AREA 7.
- E-166 SHEETS E-1, 2, 3 ELECTRICAL LAYOUT ELEVATIONS INSIDE CONTAINMENT.

NO.	REVISIONS	BY	CHKD.	DATE
1	FINAL ISSUE TO CLIENT			
2	ISSUED THE SW'S 3035 A & B AND NOTE 4			
3	ADDED 2-2-67 TO P-18 & P-19			
4	ADDED 2-2-67 TO P-18 & P-19			
5	ADDED 2-2-67 TO P-18 & P-19			
6	ADDED 2-2-67 TO P-18 & P-19			
7	ADDED 2-2-67 TO P-18 & P-19			
8	ADDED 2-2-67 TO P-18 & P-19			
9	ADDED 2-2-67 TO P-18 & P-19			
10	ADDED 2-2-67 TO P-18 & P-19			

PRO APERTURE CARD  
 POOR ORIGINAL



BECHTEL  
 SAN FRANCISCO

WESTINGHOUSE ELECTRIC CORPORATION  
 ATOMIC POWER DIVISION

POINT BEACH NUCLEAR PLANT  
 WISCONSIN MICHIGAN POWER CO. UNIT 1  
 WISCONSIN ELECTRIC POWER CO. UNIT 2

ELECTRICAL LAYOUT CONTAINMENT VESSEL  
 AREA NO. 7  
 ELEVATION 46'-0"

6118 E-134 9  
 8210050283

RIPS

8210050283

