

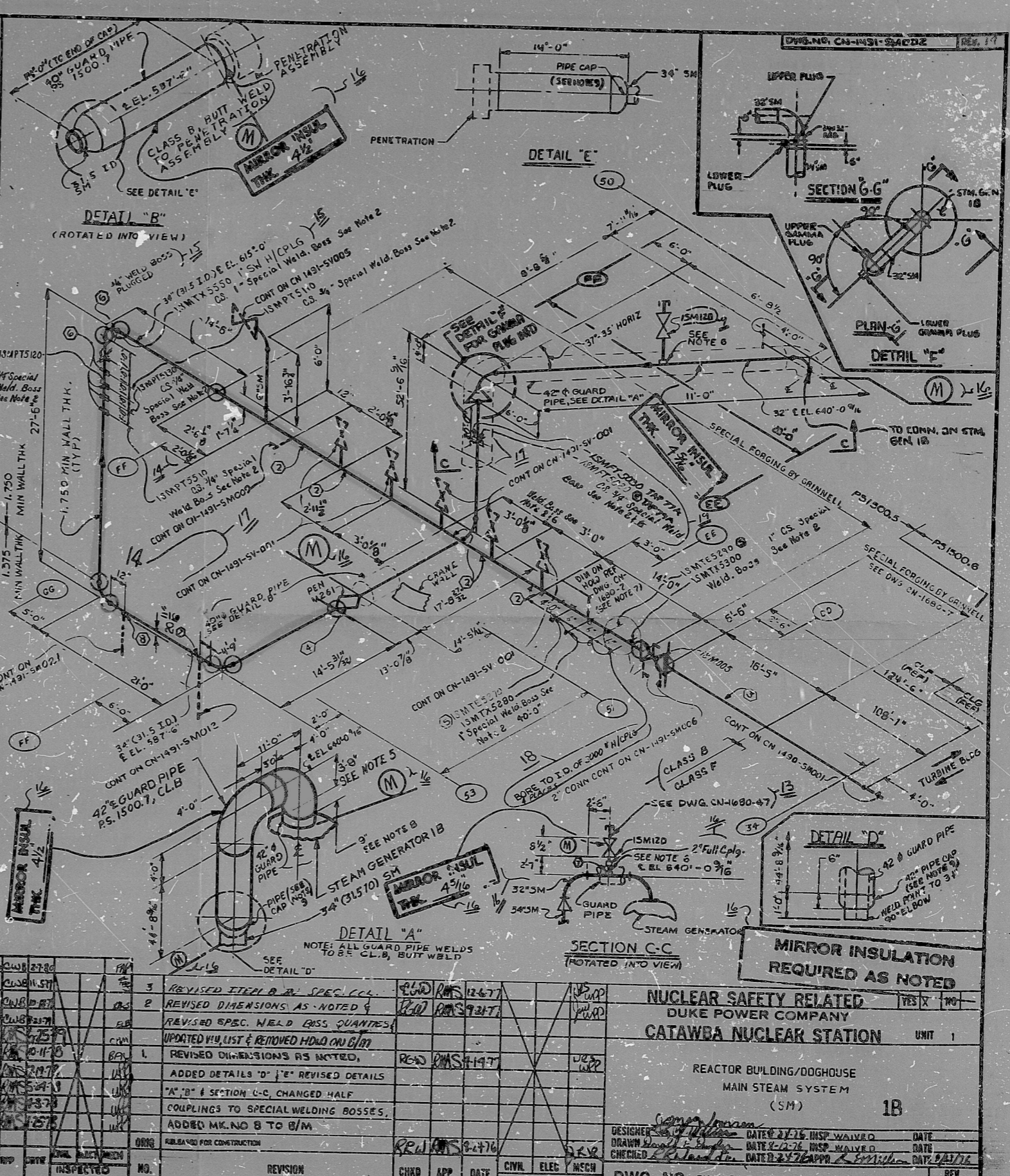
ITEM	QTY	SIZE	DESCRIPTION	CODE NO.
1	1	32	PIPE CS SA106/C SMLS/1.375	
2	4	3	PIPE CS SA106/B SMLS SCH 80	1A4AB1F08050
3	2	32	90 ELL LR BW CS SA234/WPC SMLS 1.375	
4	1	6	90 ELL LR BW CS SA234/WPC SMLS/EFW SCH 80	3J30E1F08050
5	150	3/4	PIPE CS SA106/C SMLS/ SEE SPEC FOR HT	
6	1	2"	NIPPLE SS SA376/TP304 SMLS SCH 80 6" LONG	1D4AB1F08020
7	2	2"	NIPPLE CS SA106/B SMLS SCH 80 12" LONG	1A4AB1F08020
8	1	2"	PIPE CAP CS SP30 SA106/5000 LB	3MIHE4G08020
9	4	3/4"	90° ELL LR BW CS SA234/WPC SMLS - SEE SPEC. FOR HT	
10	1		CONG BRD RW CS SA234/WPC SMLS 28" X 32" FOR W.T.	
11	1		H/CPLE CS SW SA106/6000 LB	
12	1	3/4"	DUNG CS SW SA106/3000 LB	3MIHE4G08020
13				
14			PS.1500.7	
15	48	42	PIPE CS SA155 CL/KC TO EFW 1.5" NOM	
16	2	42	90 ELL SR CS BW SMLS/EFW SA234 1.5" NOM	
17	14	40	PIPE CS SA155 CL/KC TO EFW 1.437" NOM	
18	1	42	PIPE CAP BW CS SMLS/EFW SA234 1.5" NOM	
19	1	40	PIPE CAP BW CS SMLS/EFW SA234 1.437" NOM	
20				
21			FS.1500.6	
22	109	3/4"	PIPE CS A155 CL/KC TO EFW 1.25 MIN. WT	
23				
24				
25				
26				
27				
28				
29				
30				
31				
32				

MARK NO.	ITEM NO.	DESCRIPTION	QTY	UNIT	REVISION
33					
34	1	SPECIAL FORGING BY GRINNELL			
35	1	SPECIAL FORGING BY GRINNELL			
36	1	PENETRATION ASSEMBLY M-261			
37	5	SPECIAL WELDING BOSS, 1" SEE NOTE 2, PS1500.5			
38	6	SPECIAL WELDING BOSS, 3/4" SEE NOTE 2, PS1500.5			
39	2	SPECIAL WELDING BOSS, 2" SEE NOTE 2, PS1500.5			
40	1	6" SWEEPNET BY GRINNELL			
41	1	SPECIAL WELDING BOSS SS 1" SA192/EP04 1.200 LB			
42					
43					
44					

MARK NO.	ITEM NO.	DRAWING NO.	SIZE	PIPE SPEC.
15005		CN-1205-12-001	34.00	1500.5, 1500.7
15M120		CN-1205-01-006	2.00	1500.5

NO.	REVISION	DATE	BY	CHKD	APP	DATE	CIVIL	ELEC	MECH	INSPECTED
13	REVISED TO CLEAR V.N. 8753									
12	REVISED PER M261 DIM. PER FABRICATED DIMENSIONS									
11	REVISED TO CLEAR NCR 6443									
10	REVISED AS NOTED									
9	REVISED AS NOTED									
8	REVISED AS NOTED									
7	REVISED AS NOTED									
6	REVISED AS NOTED									
5	REVISED AS NOTED									
4	REVISED AS NOTED									
3	REVISED AS NOTED									
2	REVISED AS NOTED									
1	REVISED AS NOTED									

NO.	REVISION	DATE	BY	CHKD	APP	DATE	CIVIL	ELEC	MECH	INSPECTED
16	ADDED MIRROR INSUL. (SEE PERM 15375)									
15	REV. INSTR. PER V.N. 15306									
14	REVISED AS NOTED AND ADDED 15375 INFORMATION									



NO.	REVISION	DATE	BY	CHKD	APP	DATE	CIVIL	ELEC	MECH	INSPECTED
1	REVISED AS NOTED									
2	REVISED AS NOTED									
3	REVISED AS NOTED									
4	REVISED AS NOTED									
5	REVISED AS NOTED									
6	REVISED AS NOTED									
7	REVISED AS NOTED									
8	REVISED AS NOTED									
9	REVISED AS NOTED									
10	REVISED AS NOTED									
11	REVISED AS NOTED									
12	REVISED AS NOTED									
13	REVISED AS NOTED									
14	REVISED AS NOTED									
15	REVISED AS NOTED									
16	REVISED AS NOTED									

DESIGNER	DATE	INSP. WAIVED	DATE

WELDS TO BE ISI'D
 PRC APERTURE CARD
 MAIN STEAM BREAK EXCLUSION AREA
 8210050279
 DWG. NO. CN-1491-5M002
 UNIT 1
 REACTOR BUILDING/DOGHOUSE
 MAIN STEAM SYSTEM (SM)
 1B

RIDS

8210050279

