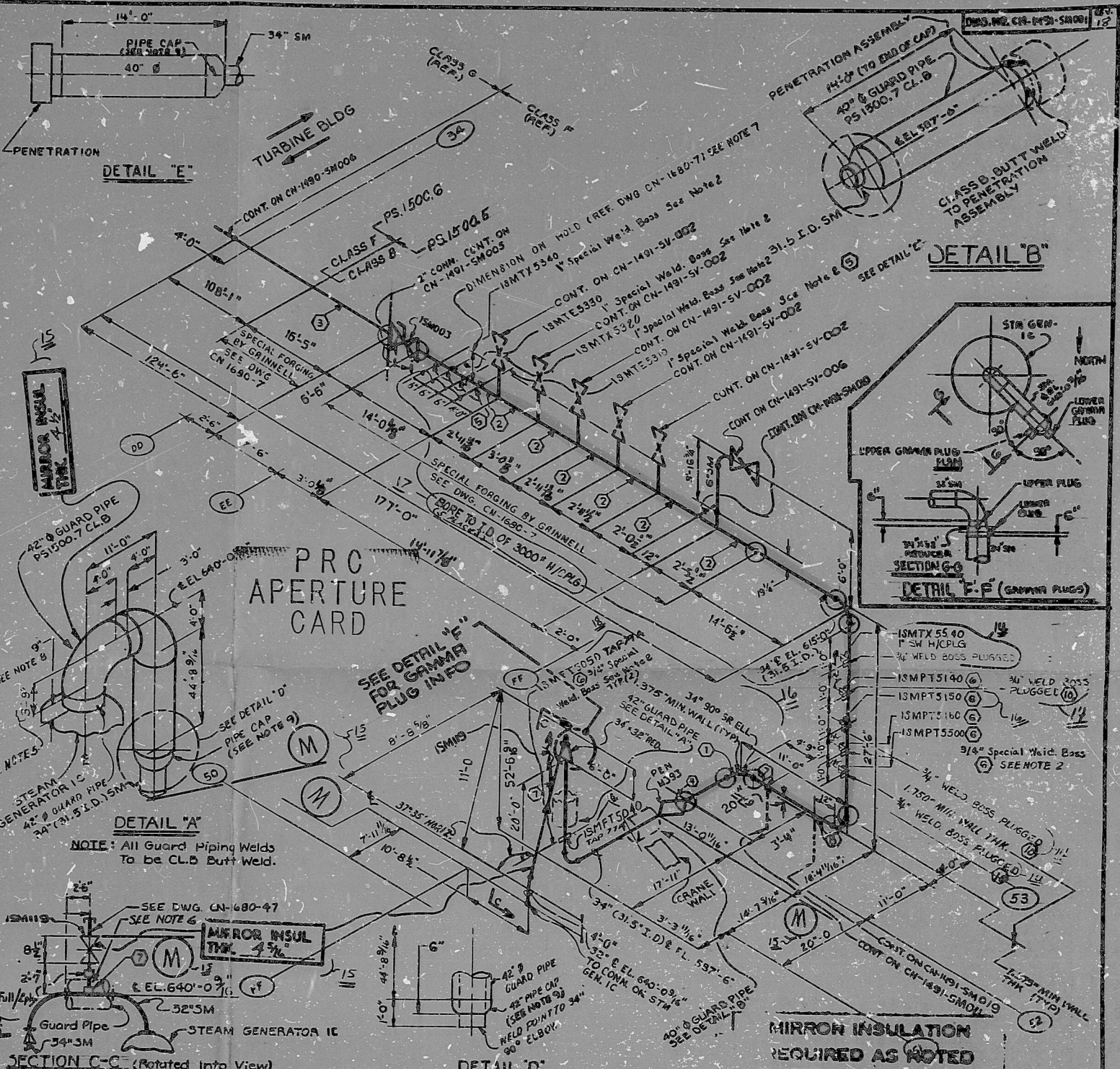


BILL OF MATERIALS				
ITEM	QTY	SIZE	DESCRIPTION	CODE NO.
1	1	32	PIPE CS SA103/C SMLS 2.375 LIN	
2	1	32	PIPE CS SA103/D SMLS SCH 80	M4AB1F0B060
3	2	32	90° ELL LR BW CS SA234/WPC SMLS 1.375 LIN	
4	1	32	90° ELL LR BW CS SA234/WPC SMLS/EPW SCH 80	3J3DE1F0B060
5	1	34"	PIPE CS SA106/C SMLS/ SEE SPEC FOR WT	
6	1	2"	NIPPLE SS SA192/TP304 SMLS SCH 80 6" LONG	1B4AD1F0B020
7	2	2"	NIPPLE CS SA106/D SMLS SCH 80 12" LONG	1AAB1F0B020
8	1	2"	PIPE CAP CS SCRD SA105/ 2000 LB	3M1HE4G0B020
9	3	34"	90° ELL. LR BW CS SA234/WPC SMLS 3/4" SPEC. FOR WT.	
10	1		CONC. BOSS 2" DIA. 2" H/PC SMLS 3/4" 32" SML SPEC. FOR WT.	
11	1		W/PLUG CS SW SA105/6000 LB	
12	5	3/4"	PLUG CS SW SA105/3000 LB	3M1FAAG10000
13				
14				
15				
16			PS 1500.6	
17	109	34"	PIPE CS SA155 CL1/KC70 EFW 1.25 MIN WT	
18				
19				
20				
21			PS 1500.7	
22	48	42	PIPE CS SA155 CL1/KC70 EFW 1.5" NOM	
23	2	42	90° ELBOW, SR CS BW SMLS/EPW SA234 1.5" NOM	
24	14	40	PIPE CS SA155 CL1/KC70 EFW 1.437" NOM	
25	1	42	PIPE CAP BW CS SMLS/EPW SA234 1.5" NOM	
26	1	40	PIPE CAP BW CS SMLS/EPW SA234 1.437" NOM	
27				
28				
29				
30				
31				
32				

SPECIALS				
MK. NO.	QTY	DESCRIPTION	CODE NO.	REVISION
33	1	34" 90° ELL SR BW CS SA234/WPC SMLS 1.375 MAIN WALL		
34	1	SPEC. FORGING BY GRINNELL		
35	1	SPEC. FORGING BY GRINNELL		
36	1	PENETRATION ASSY. M-393		
37	6	SPECIAL WELDING BOSS, 1" - SEE NOTE 2		
38	7	SPECIAL WELDING BOSS, 3/4" - SEE NOTE 2		
39	2	SPECIAL WELDING BOSS, 2" - SEE NOTE 2		
40	1	6" SNEEPOLET BY GRINNELL		
41	1	1" SPECIAL WELD BOSS SS SA192/TP304 6000 LB	3M1FTH10000	
42	3	3" SPECIAL WELD BOSS SS SA192/TP304 6000 LB	3M1FT4710000	
43				
44				

VALVE LIST				PIPE SPEC.	
MARK NO.	ITEM NO.	DRAWING NO.	SIZE	1500.5, 1500.7	1500.6
15M119		CN-1205.12-001	34.00		
15M119		CN-1205.01-000	2.00		

GENERAL NOTES		REVISION	
1. PIPING BEING ON COMPASS DRAWINGS ON 2" SCALE 00-2, 01-2, 02-2, 03-2, 04-2, 05-2, 06-2, 07-2, 08-2, 09-2, 10-2, 11-2, 12-2, 13-2, 14-2, 15-2, 16-2, 17-2, 18-2, 19-2, 20-2, 21-2, 22-2, 23-2, 24-2, 25-2, 26-2, 27-2, 28-2, 29-2, 30-2, 31-2, 32-2, 33-2, 34-2, 35-2, 36-2, 37-2, 38-2, 39-2, 40-2, 41-2, 42-2, 43-2, 44-2, 45-2, 46-2, 47-2, 48-2, 49-2, 50-2, 51-2, 52-2, 53-2, 54-2, 55-2, 56-2, 57-2, 58-2, 59-2, 60-2, 61-2, 62-2, 63-2, 64-2, 65-2, 66-2, 67-2, 68-2, 69-2, 70-2, 71-2, 72-2, 73-2, 74-2, 75-2, 76-2, 77-2, 78-2, 79-2, 80-2, 81-2, 82-2, 83-2, 84-2, 85-2, 86-2, 87-2, 88-2, 89-2, 90-2, 91-2, 92-2, 93-2, 94-2, 95-2, 96-2, 97-2, 98-2, 99-2, 100-2.	12	REVISED TO CLEAR V.N. 8753	
2. HOLS WILL HAVE TO BE PROVIDED IN GUARD PIPE. HOLS APPLIES TO TURBINE BLDG FORCE ALSO.	11	REVISED AS NOTED	
3. POINTS TO BE SPILT & ADDED IN FIELD.	10	REVISED AS NOTED	
4. DO NOT WELD PIPE CAP TO PROCESS PIPE.	9	REVISED PER GRAMMA AS BUILT INFO	
5. REF. DWG. CN-1680-51 FOR STEERING OUTLET INFORMATION.	8	REVISED AS NOTED	
	7	REVISED AS NOTED	
	6	ADDED NOTE 10	
	5	REVISED AS NOTED	
	4	REVISED PER GRAMMA AS BUILT INFO	
	3	REVISED PER GRAMMA AS BUILT INFO	
	2	REVISED PER GRAMMA AS BUILT INFO	
	1	REVISED PER GRAMMA AS BUILT INFO	



GENERAL NOTES		REVISION	
1. PIPING BEING ON COMPASS DRAWINGS ON 2" SCALE 00-2, 01-2, 02-2, 03-2, 04-2, 05-2, 06-2, 07-2, 08-2, 09-2, 10-2, 11-2, 12-2, 13-2, 14-2, 15-2, 16-2, 17-2, 18-2, 19-2, 20-2, 21-2, 22-2, 23-2, 24-2, 25-2, 26-2, 27-2, 28-2, 29-2, 30-2, 31-2, 32-2, 33-2, 34-2, 35-2, 36-2, 37-2, 38-2, 39-2, 40-2, 41-2, 42-2, 43-2, 44-2, 45-2, 46-2, 47-2, 48-2, 49-2, 50-2, 51-2, 52-2, 53-2, 54-2, 55-2, 56-2, 57-2, 58-2, 59-2, 60-2, 61-2, 62-2, 63-2, 64-2, 65-2, 66-2, 67-2, 68-2, 69-2, 70-2, 71-2, 72-2, 73-2, 74-2, 75-2, 76-2, 77-2, 78-2, 79-2, 80-2, 81-2, 82-2, 83-2, 84-2, 85-2, 86-2, 87-2, 88-2, 89-2, 90-2, 91-2, 92-2, 93-2, 94-2, 95-2, 96-2, 97-2, 98-2, 99-2, 100-2.	12	REVISED TO CLEAR V.N. 8753	
2. HOLS WILL HAVE TO BE PROVIDED IN GUARD PIPE. HOLS APPLIES TO TURBINE BLDG FORCE ALSO.	11	REVISED AS NOTED	
3. POINTS TO BE SPILT & ADDED IN FIELD.	10	REVISED AS NOTED	
4. DO NOT WELD PIPE CAP TO PROCESS PIPE.	9	REVISED PER GRAMMA AS BUILT INFO	
5. REF. DWG. CN-1680-51 FOR STEERING OUTLET INFORMATION.	8	REVISED AS NOTED	
	7	REVISED AS NOTED	
	6	ADDED NOTE 10	
	5	REVISED AS NOTED	
	4	REVISED PER GRAMMA AS BUILT INFO	
	3	REVISED PER GRAMMA AS BUILT INFO	
	2	REVISED PER GRAMMA AS BUILT INFO	
	1	REVISED PER GRAMMA AS BUILT INFO	

NUCLEAR SAFETY RELATED		YES	X	NO
DUKE POWER COMPANY				
CATAWBA NUCLEAR STATION				
REACTOR BUILDING/DOGHOUSE				
MAIN STEAM SYSTEM (SN)				
UNIT 1				
1C				

DESIGNER	DATE	INSP. WAIVED	DATE
ERW	8-22-76		
ERW	8-22-76		
ERW	8-22-76		

DWG. NO. CN-1491-SM001
 MAIN STEAM BREAK EXCLUSION AREA
 8210050269

WELDS TO BE ISI'D

RIDS

8210050269

