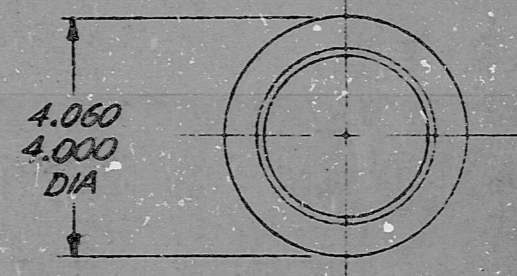
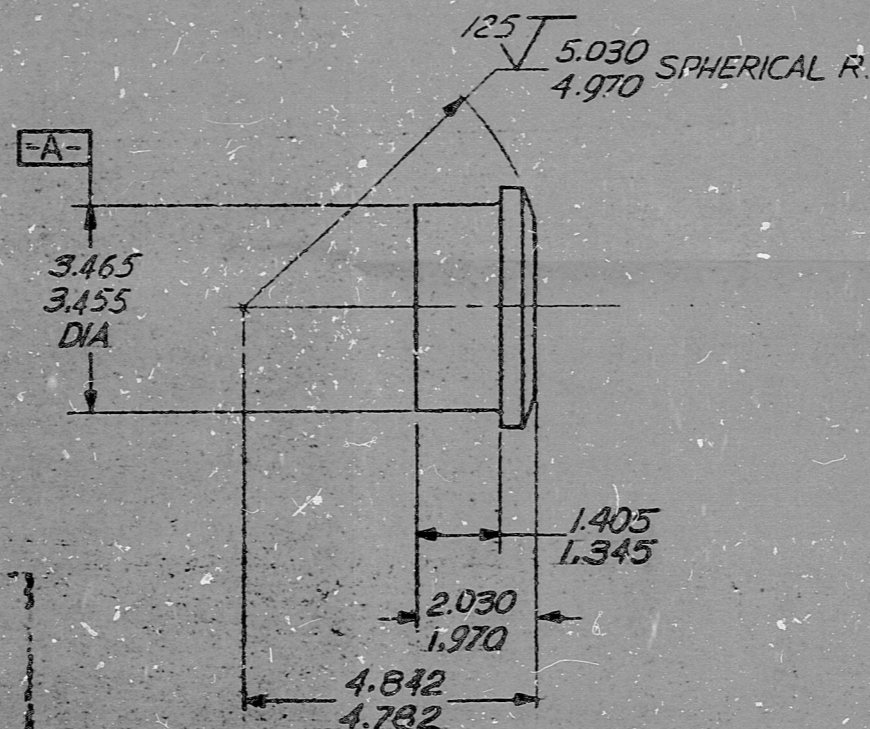
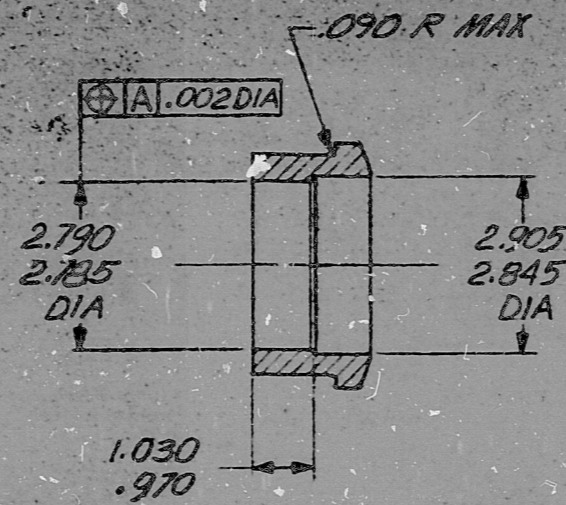


REVISIONS				
ZONE	LTR	DESCRIPTION	DATE	APPROVED



10. CLEAN AND PACKAGE PER NPS 70119.
9. MATERIAL: ASTM A276 TYPE 316 COND. A STAINLESS STEEL.
8. APPLY PART NUMBER PER NPS-70007 CLASS 8.
7. FINISH ON ALL MACHINED SURFACES TO BE $\sqrt{250}$. INTERPRET SURFACE TEXTURE (FINISHES) PER ANSI STANDARD B46.1.
6. REMOVE ALL BURRS AND BREAK SHARP EDGES .005-.015.
5. MACHINED FILLET RADIUS TO BE .015-.030.
4. DIAMETERS ON COMMON CENTER LINE TO BE TRUE POSITION WITHIN .010 TOTAL.
3. THREADS TO BE IN ACCORDANCE WITH ANSI STANDARD B1.1.
2. DIMENSIONS ARE SHOWN AFTER PLATING.
1. INTERPRET DRAWING DIMENSIONS AND TOLERANCES IN ACCORDANCE WITH ANSI STANDARD Y14.5.

IN PRODUCTS

NOTES, UNLESS OTHERWISE SPECIFIED.

PRC APERTURE CARD

8209080456

		CONTRACT NO. <i>Q. Mutual</i> 25-FEB-74		Weston Hydraulics VAN NUYS, CALIFORNIA	
		DRAWN BY <i>L.A. Mattson</i> 01 APR 74		TITLE GLAND, SEAL -	
		CHECK BY <i>L.A. Mattson</i> 28 FEB 74		12 INCH GATE VALVE	
		DES. BY <i>William Dwyer</i> 1 April 74		SIZE CGDE IDENT NO.	
		PROJ. ENG. <i>Wm. King</i> 1 April 74		C 79294 70906	
		APPD. <i>R.L. Tel.</i> 3/2/74		SCALE 1/2 WT.	
		APPD. <i>R. Wright</i> 4/1/74		SHEET 1 OF 1	
		APPD. <i>Alan Hanson</i> 4/2/74			
		MATERIAL: \triangle			
		HEAT TREAT: NA			
		FINISH: PASSIVATE PER NPS 70353			
		APPLICATION			

RIDS

8209080456

