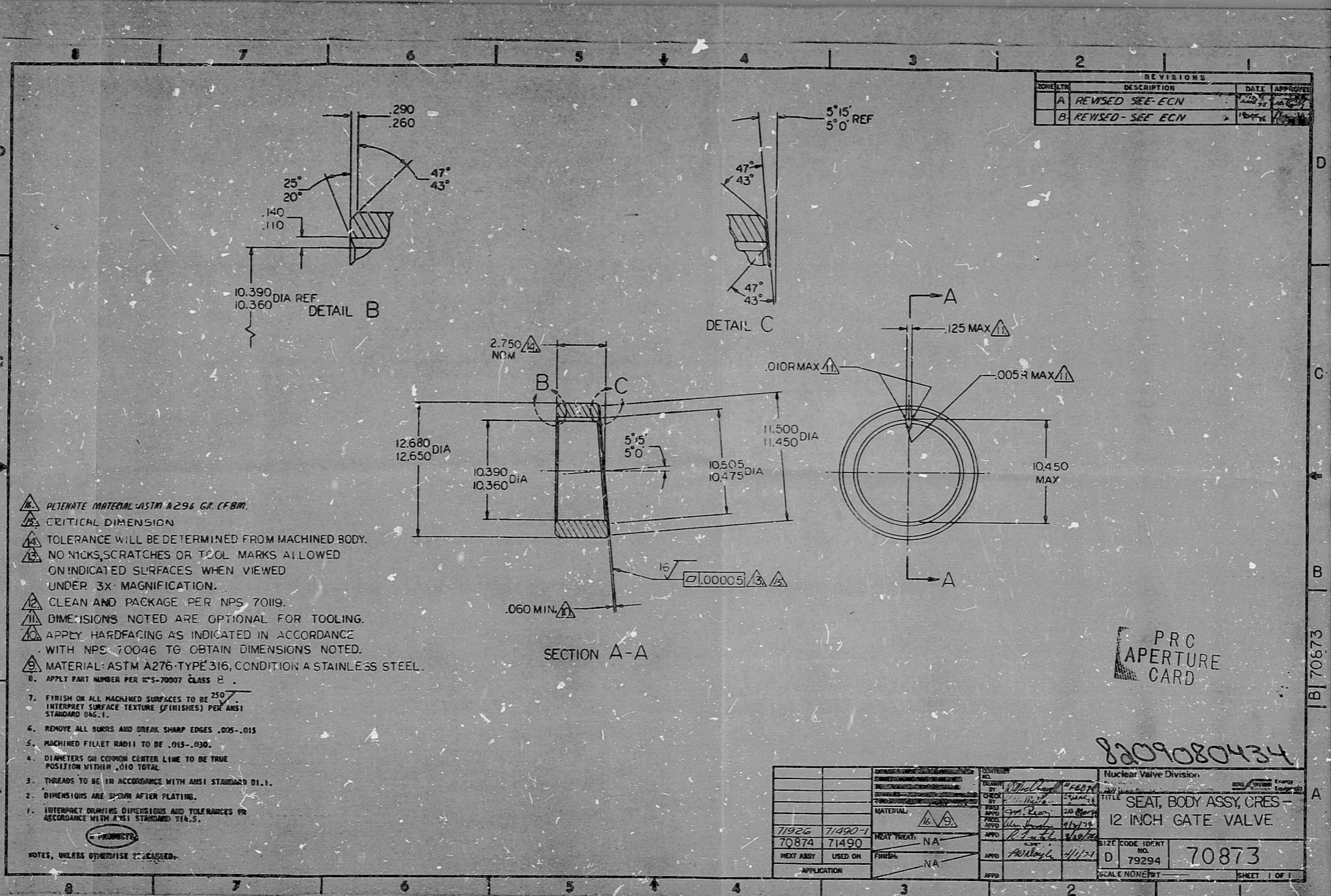


22"  
17"  
11"  
8.5"  
11"  
17"  
22"

22"  
17"  
11"  
8.5"  
11"  
17"  
22"



REVISIONS		
NO.	DESCRIPTION	DATE
A	REVISED - SEE ECN	
B	REVISED - SEE ECN	

- ▲ PLATE MATERIAL - ASTM A 296 GR. CF8M.
- ▲ CRITICAL DIMENSION
- ▲ TOLERANCE WILL BE DETERMINED FROM MACHINED BODY.
- ▲ NO NICKS, SCRATCHES OR TOOL MARKS ALLOWED ON INDICATED SURFACES WHEN VIEWED UNDER 3X MAGNIFICATION.
- ▲ CLEAN AND PACKAGE PER NPS 7019.
- ▲ DIMENSIONS NOTED ARE OPTIONAL FOR TOOLING.
- ▲ APPLY HARDFACING AS INDICATED IN ACCORDANCE WITH NPS 70046 TO OBTAIN DIMENSIONS NOTED.
- ▲ MATERIAL: ASTM A276-TYPE 316, CONDITION A STAINLESS STEEL.
- ▲ APPLY PART NUMBER PER NPS-70007 CLASS B.
- 7. FINISH ON ALL MACHINED SURFACES TO BE  $\sqrt{250}$  INTERPRET SURFACE TEXTURE (FINISHES) PER ANSI STANDARD B46.1.
- 8. REMOVE ALL BURRS AND BREAK SHARP EDGES .005-.015
- 9. MACHINED FILLET RADIUS TO BE .015-.030.
- 10. DIAMETERS ON COMMON CENTER LINE TO BE TRUE POSITION WITHIN .010 TOTAL.
- 11. THREADS TO BE IN ACCORDANCE WITH ANSI STANDARD B1.1.
- 12. DIMENSIONS ARE SP/2WH AFTER PLATING.
- 13. INTERPRET DIMENSIVE DIMENSIONS AND TOLERANCES IN ACCORDANCE WITH ANSI STANDARD B1.1.

NOTES, UNLESS OTHERWISE SPECIFIED:

PRC  
APERTURE  
CARD

8209080434

71926		71490-1		70874		71490	
NEXT ASSY		USED ON		FINISH		APPLICATION	
NA		NA		NA		NA	

Nuclear Valve Division	
TITLE	SEAT, BODY ASSY, CRES-12 INCH GATE VALVE
SIZE CODE IDENT NO.	D 79294
SCALE	NONE/ST
SHEET 1 OF 1	

RIDS

8209080434

