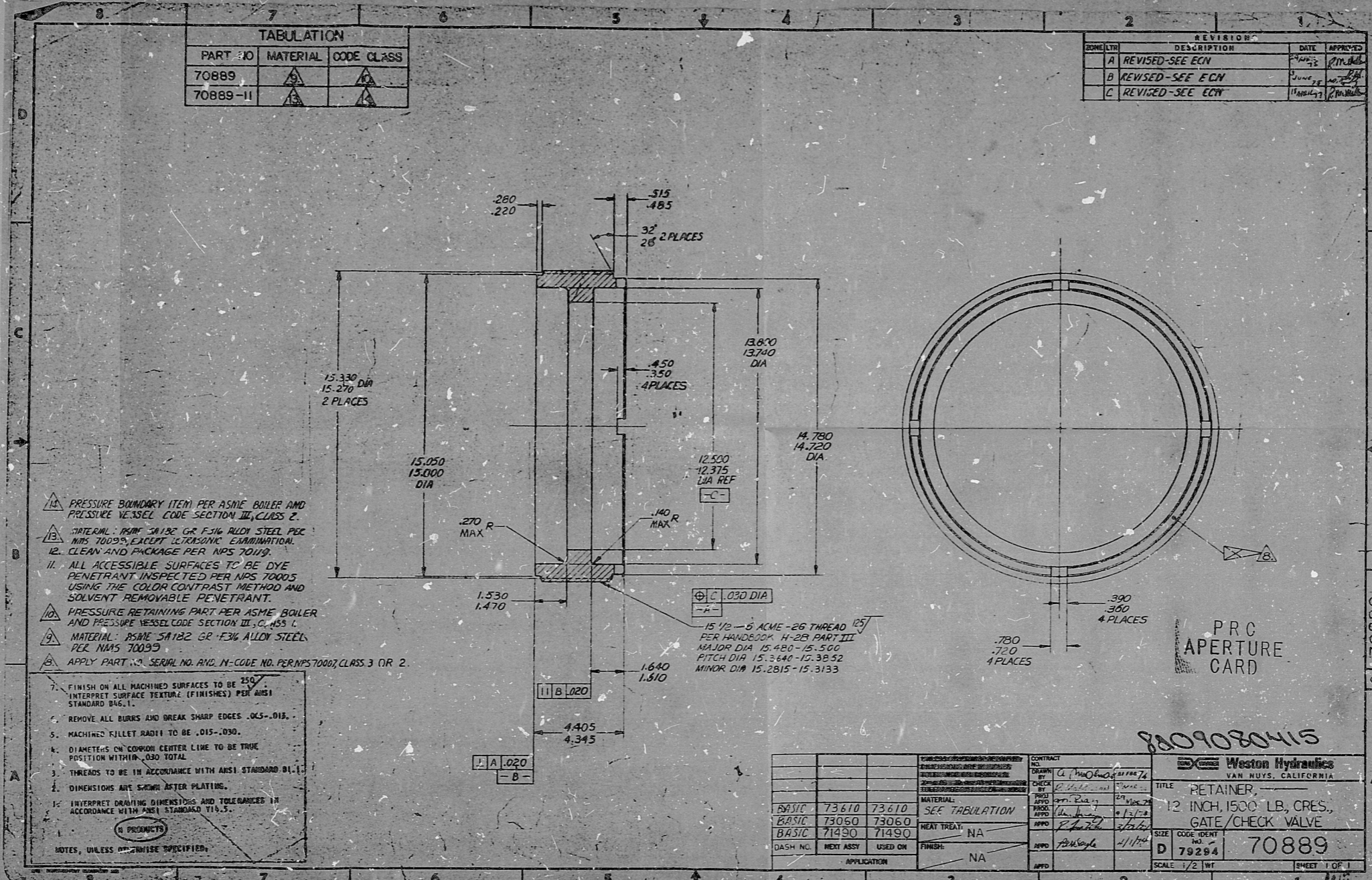


TABULATION		
PART NO	MATERIAL	CODE CLASS
70889	△	△
70889-II	△	△

REVISION			
REV. NO.	DESCRIPTION	DATE	APPROVED
A	REVISED-SEE ECN	June 28	[Signature]
B	REVISED-SEE ECN	June 28	[Signature]
C	REVISED-SEE ECN	July 11	[Signature]



- △ PRESSURE BOUNDARY ITEM PER ASME BOILER AND PRESSURE VESSEL CODE SECTION III, CLASS 2.
- △ INTERNAL RAMP 30/30 GR F316 ALLOY STEEL PER NPS 70005 EXCEPT FOR SOME EXHAUSTION. CLEAN AND PACKAGE PER NPS 70119.
- II. ALL ACCESSIBLE SURFACES TO BE DYE PENETRANT INSPECTED PER NPS 70005 USING THE COLOR CONTRAST METHOD AND SOLVENT REMOVABLE PENETRANT.
- △ PRESSURE RETAINING PART PER ASME BOILER AND PRESSURE VESSEL CODE SECTION III, CLASS 2.
- △ MATERIAL: ASME SA182 GR F316 ALLOY STEEL PER NPS 70005.
- △ APPLY PART NO. SERIAL NO. AND IN-CODE NO. PER NPS 70007 CLASS 3 OR 2.

- 7. FINISH ON ALL MACHINED SURFACES TO BE 320.
- 8. INTERPRET SURFACE TEXTURE (FINISHES) PER ANSI STANDARD B46.1.
- 9. REMOVE ALL BURRS AND BREAK SHARP EDGES .045-.012.
- 5. MACHINED FILLET RADIUS TO BE .015-.030.
- 4. DIAMETERS ON COMMON CENTER LINE TO BE TRUE POSITION WITHIN .030 TOTAL.
- 3. THREADS TO BE IN ACCORDANCE WITH ANSI STANDARD B1.1.
- 2. DIMENSIONS ARE SHOWN AFTER PLATING.
- 1. INTERPRET DRAWING DIMENSIONS AND TOLERANCES IN ACCORDANCE WITH ANSI STANDARD Y14.5.

NOTES, UNLESS OTHERWISE SPECIFIED:

CONTRACT NO. 74		WESTON HYDRAULICS	
DRAWN BY: [Signature]		VAN NUYS, CALIFORNIA	
CHECKED BY: [Signature]		TITLE: RETAINER	
MATERIAL: SEE TABULATION		12 INCH, 1500 LB. CRES. GATE/CHECK VALVE	
HEAT TREAT: NA		SIZE: D	
FINISH: NA		CODE IDENT: 70889	
APPLICATION:		SCALE: 1/2" = 1"	
DASH NO.:		SHEET 1 OF 1	

RIDS

8209080415

