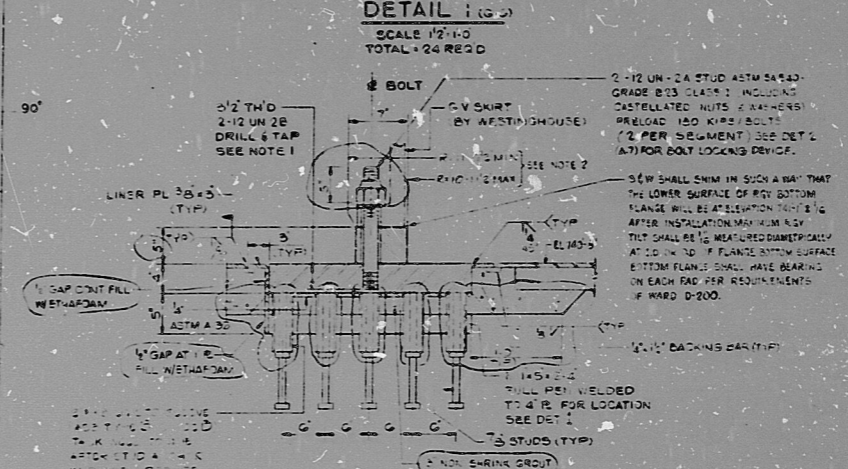


REACTOR CAVITY PLAN @ EL. 740'-8"
 PENETRATION & EMBED. # EL. NOS. 7475 TO 7524 ALLOCATED
 SCALE: 3/8" = 1'-0"

PRC
 APERTURE
 CARD

POOR ORIGINAL

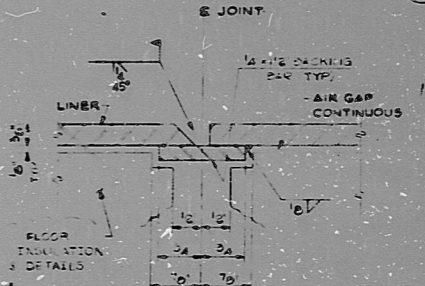
PLAN-EMBEDMENT FOR GUARD VESSEL



SECTION A-A (1/8")
 SCALE: 1/2" = 1'-0"



SECTION C-C (1/8")
 SCALE: 1/2" = 1'-0"



SECTION B-B (1/8")
 SCALE: FULL SIZE

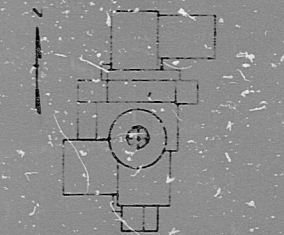
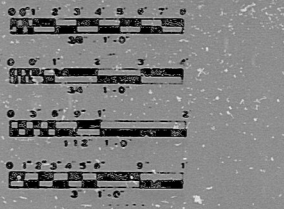
SECTION D-D (1/8")
 SCALE: 1/2" = 1'-0"

- NOTES**
1. A MATCHED MACHINED TEMPLATE WILL BE PROVIDED BY THE GUARD VESSEL SUPPLIER. THE TEMPLATE WILL BE DRILLED AT THE SAME TIME THE GUARD VESSEL FLANGE HOLES ARE DRILLED. THE TEMPLATE WILL BE FABRICATED IN 4 PIECES FOR SITE ASSEMBLY. THE TEMPLATE WILL ACCURATELY REPRESENT THE POSITION OF THE FLANGE HOLES TO THE GUARD VESSEL CENTERLINE. THE CONTRACTOR SHALL INSURE THAT THE CENTERLINE OF THE TEMPLATE SHALL BE CONCENTRIC TO THE REACTOR CAVITY CENTERLINE BY 1/4".
 2. THE RADIUS SHALL BE MEASURED ALONG THE CENTERLINE OF 2" Ø BOLT.
 3. FOR CELL LINER GENERAL NOTES SEE DRC NS1186 & NS1187.

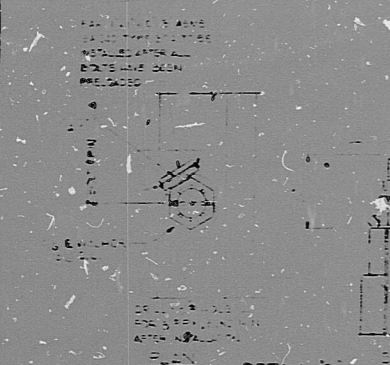
REFERENCE DRAWINGS

- NS1481 RCB REACTOR CAVITY PLAN AT EL. 740'-8" SECTIONS AND DETAILS
- NS1482 RCB REACTOR CAVITY PLAN AT EL. 788'-0" SECTIONS AND DETAILS
- NS1483 RCB REACTOR CAVITY PLAN AT EL. 791'-5" SECTIONS AND DETAILS
- NS1484 RCB REACTOR CAVITY PLAN AT EL. 784'-8" SECTIONS AND DETAILS
- NS1485 RCB REACTOR CAVITY PLAN AT EL. 802'-3"
- NS1486 RCB REACTOR CAVITY PLAN AT EL. 810'-0" SECTIONS AND DETAILS
- NS1487 RCB HEAD ACCESS AREA PENETRATION AND EMBEDMENT ELEVATIONS
- NS1488 RCB HEAD ACCESS AREA PENETRATION AND EMBEDMENT ELEVATIONS
- NS1470 RCB REACTOR CAVITY SECTIONS AND DETAILS
- NS1471 RCB PART PLANS AT EL. 791'-5" SECTIONS AND DETAILS
- NS1472 RCB REACTOR CAVITY SECTIONS AND DETAILS
- NS1473 RCB REACTOR CAVITY SECTIONS AND DETAILS
- NS1475 RCB REACTOR CAVITY DEVELOPED EL. A-A 2'-0" TO 9'-0" AT R = 20'-0"
- NS1478 RCB REACTOR CAVITY DEVELOPED EL. B-B 3'-0" TO 27'-0" AT R = 20'-0"
- NS1477 RCB REACTOR CAVITY LINER SECTIONS AND DETAILS
- NS1480 RCB REACTOR CAVITY AND HEAD ACCESS AREA EMBEDMENT PLATES SECTIONS AND DETAILS
- NS1481 RCB REACTOR CAVITY AND HEAD ACCESS AREA PENETRATION LIST
- NS1482 RCB REACTOR CAVITY SECTIONS & DETAILS

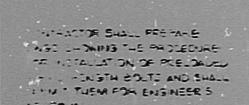
LEGEND (SEE DWR NS1295)
GRAPHIC SCALES



KEY PLAN



DETAIL I



DETAIL II

| REVISION | | REVISION | | REVISION | | REVISION | |
|----------|----------|----------|----------|----------|----------|----------|----------|
| 1 | AS SHOWN | 1 | AS SHOWN | 1 | AS SHOWN | 1 | AS SHOWN |
| 2 | ... | 2 | ... | 2 | ... | 2 | ... |
| 3 | ... | 3 | ... | 3 | ... | 3 | ... |
| 4 | ... | 4 | ... | 4 | ... | 4 | ... |
| 5 | ... | 5 | ... | 5 | ... | 5 | ... |

NUCLEAR SAFETY RELATED

CBRP PROJECT OFFICE
 CLINCH RIVER BREEDER REACTOR PLANT
BURNS AND ROE, INC.
 ENGINEERS AND ARCHITECTS
 BREEDER REACTOR DIVISION - KANAWHA COUNTY
 REACTOR CONTAINMENT BUILDING
 REACTOR CAVITY PLAN AT EL. 740'-8"
 SECTIONS & DETAILS 300-27
 DWG. NO. NS 1481 REV. 1
 1/8" = 1'-0"

RIDS

820903045

