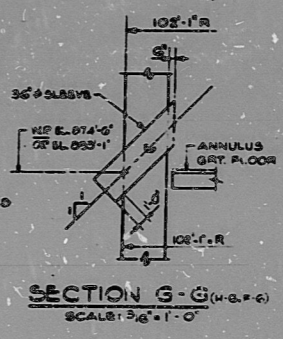


DEVELOPED WALL ELEVATION E-B  
STR EMBEDDED PLATE MARK NO 700 TO 749 (R-102-F), 8500 TO 8574 (R-96-F) ALLOCATED

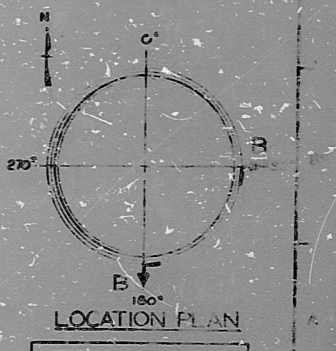
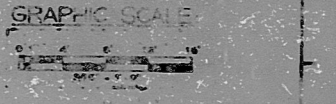
MARK	ZONE	DETAIL TYPE DWG NO	LOCATION AZIMUTH	TOP OF R EL	REF DWG	REMARKS
AP 634	E-6	1	NS1198	912.75	NS1596	
AP 638				907.114		
AP 639						
AP 636						
AP 635						

- NOTES**
- SEE DWG NS1033 FOR GENERAL NOTES
  - SEE DWG NS1030 FOR REFERENCE DWGS
  - FOR NUCLEAR PENETRATION SCHEDULE SEE DWG NS1178
  - FOR HVAC PENETRATION SCHEDULE SEE DWG NS1103
  - FOR ELECTRICAL PENETRATION SCHEDULE SEE DWG NS1345
  - FOR EMBEDDED PLATE DETAIL SEE DWG NS1188



PRC APERTURE CARD

- LEGEND:**
- SEE DWG NS1036
  - DESIGNATED EMBEDDED PLATES FOR PARTITION FLOOR AT LEVEL



MARK	ZONE	DETAIL TYPE DWG NO	LOCATION AZIMUTH	TOP OF R EL	REF DWG	REMARKS	MARK	ZONE	DETAIL TYPE DWG NO	LOCATION AZIMUTH	TOP OF R EL	REF DWG	REMARKS	MARK	ZONE	DETAIL TYPE DWG NO	LOCATION AZIMUTH	TOP OF R EL	REF DWG	REMARKS								
AP 700	E-6	6B NS1190	854.9'	NS3291			AP 6500	H-6	1	NS1198	90° 0'	859-11.4'	NS1552	AP 6317	H-6	1	NS1198	127° 30'	855-2.4'	NS1552	AP 6334	H-3	1	NS1198	165° 0'	853-8.4'	NS1552	
AP 701	E-6						AP 6501	H-6			97° 30'			AP 6318	H-6			135° 0'			AP 6335	H-3			172° 30'			
AP 702	E-6						AP 6502	H-7			105° 0'			AP 6319	H-5			142° 30'			AP 6336	H-6			90° 0'	846-11.4'		
AP 703	E-7						AP 6503	H-7			112° 30'			AP 6320	H-4			150° 0'			AP 6337	H-6			97° 30'			
AP 704	E-7	GM	825° 0'				AP 6504	H-6			120° 0'			AP 6321	H-4			157° 30'			AP 6338	H-7			105° 0'			
AP 705	E-7	CA	834° 9'				AP 6505	H-6			127° 30'			AP 6322	H-3			165° 0'			AP 6339	H-7			112° 30'			
AP 706	F-5	6B	855° 2'	NS3295			AP 6506	H-3			135° 0'			AP 6323	H-3			172° 30'			AP 6340	H-6			120° 0'			
AP 707	F-8	6B					AP 6507	H-3			142° 30'			AP 6324	H-6			90° 0'	855-8.4'		AP 6341	H-6			127° 30'			
AP 708	F-7	6B					AP 6508	H-4			150° 0'			AP 6325	H-3			97° 30'			AP 6342	H-3			135° 0'			
AP 709	F-7	7C	855° 0'				AP 6509	H-4			157° 30'			AP 6326	H-7			105° 0'										
							AP 6510	H-3			165° 0'			AP 6327	H-7			112° 30'										
							AP 6511	H-3			172° 30'			AP 6328	H-6			120° 0'			AP 6343	H-4			157° 30'			
AP 721	H-3	6A NS1190	801° 0'	NS2266			AP 6512	H-6			30° 0'	885-2.4'		AP 6329	H-6			127° 30'			AP 6344	H-4			165° 0'			
AP 722							AP 6513	H-6			97° 30'			AP 6330	H-5			135° 0'			AP 6345	H-3			172° 30'			
AP 723							AP 6514	H-7			105° 0'			AP 6331	H-5			142° 30'			AP 6346	K-6			912° 7.4'	NS1596		
AP 724							AP 6515	H-7			112° 30'			AP 6332	H-4			150° 0'			AP 6347	H-4						
AP 725	H-4	3					AP 6516	H-6			120° 0'			AP 6333	H-4			157° 30'			AP 6350							

POOR ORIGINAL

NO	DATE	DESCRIPTION	BY	CHKD	APP'D
0		APPROVED FOR CONSTRUCTION			
1		REVISED SLAB ELEVATIONS AND WALLS (DG THRU JG)			
108		DELETED HOLD 25000318 (E-G (F-9))			
109		REVISED PLATE AP 709 ELEVATION (BA) (F-7)			
110		REVISED LOCATION OF REBAR-858 CINDT 27AA/00-1108			
1101		REVISED DWG TITLE (A-1)			

**NUCLEAR SAFETY RELATED**

**GROUP PROJECT OFFICE**  
GENERAL CONTRACTOR AND ARCHITECT  
GENERAL CONTRACTOR AND ARCHITECT  
ENGINEERS AND ARCHITECTS  
ENGINEERS AND ARCHITECTS  
CONFIDENTIAL WALL PENETRATION SCHEDULE

DWG NO: NS1233



RIDS

8029030096

