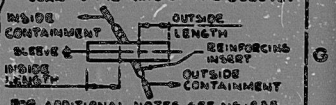
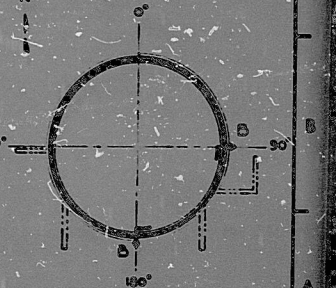


- NOTES:**
- SEE DWG 05188 FOR NOTE 1
 - SEE ELEVATION 0428111 ON PEN LIST. SEE ELEVATION 0428112, 0428113 ON THE INSIDE FACE OF THE STEEL CONDENSER SHELL.
 - PEN INDICATED AS (C) DENOTES INTER-MATE AND NOT RADIAL. DENOTES PENETRATED BEHIND THE CARDS AND BUCKING AT 250' RADII BELOW EL 810'-0". SEE NOTE 4 PARALLEL TO N-S AXIS; SEE PEN 8 PARALLEL TO E-W AXIS.) LIST
 - EQUIPMENT AND PERSONNEL ACCESS (REWORK) SIZE IS 18" DIA. MAXIMUM
 - DIMS. BASED ON REF DWGS: 058 - GAS IN 320 THRU MH 027 DATED 5-3-77; 060 - GAS IN 700 THRU MH 034 DATED 10-17-77; 066 - WATER IN 200 THRU MH 020 THRU MH 027 DATED 6-28-77; 068 - GAS IN 320 THRU MH 027 DATED 5-3-77
 - ALL WORK IN THIS DWG IS SEISMIC CATEGORY II APPLICABLE DESIGN CODES AS PER APIC SECT. ON DIVISION 2 NUCLEAR POWER PLANT COMPONENTS.
 - FOR NON-RADIAL PENETRATIONS, THE INSIDE AND OUTSIDE SLEEVE LENGTH IS THE MINIMUM PROJECTION FROM THE REINFORCING BARS TO THE SLEEVE END (SEE NOTE 10 ON DWG. 05155). THE ENDS OF THE SLEEVES ARE CUT PERPENDICULAR TO THE AXIS OF THE SLEEVE.
- REFERENCE DRAWINGS:**
- 05155 RCD EXT. WALL PENET. ELEV. 0' TO 80' PRESS. RCD EXT. WALL PENET. 0.50"
 - 05156 RCD TO 250'
 - 05157 RCD EXT. WALL PENET. ELEV. 250' TO 300'
 - 05158 RCD INCL. 6 INVC. PENET. LIST.
 - 05159 RCD ELECTRICAL PENET. LIST.
 - 05160 RCD ELECTRICAL PENET. LIST.
 - 05161 RCD MECHANICAL PENET. LIST.



- LEGEND**
- SEE STANDARD SYMBOLS HAWK D-0030
 - PEN IDENTIFICATION: EDC NUMBER, RISE NUMBER, TYPE, CELL NUMBER
 - EXAMPLE: RISE 0078, EDC 001, TYPE 1, CELL 102A
- GRAPHIC SCALE**
- 0' 1" 2" 3" 4" 5" 6" 7" 8" 9" 10"
- 0' 1' 2' 3' 4' 5' 6' 7' 8' 9' 10'



REVISION		REVISION		REVISION		REVISION		REVISION		REVISION		REVISION		REVISION	
NO.	DATE	BY	CHKD.	NO.	DATE	BY	CHKD.	NO.	DATE	BY	CHKD.	NO.	DATE	BY	CHKD.
037				27				0				0			
038				28				1				1			
039				29				2				2			
040				30				3				3			
041				31				4				4			
042				32				5				5			
043				33				6				6			
044				34				7				7			
045				35				8				8			
046				36				9				9			
047				37				10				10			
048				38				11				11			
049				39				12				12			
050				40				13				13			
051				41				14				14			
052				42				15				15			

PROJECT MANAGEMENT CORP.		NUCLEAP SAFETY RELATED	
PROJECT NO.	NS 1234	DWG. NO.	NS 1234
DATE		REV.	
BY		CHKD.	
APP'D.		DATE	

R105

8209030083

