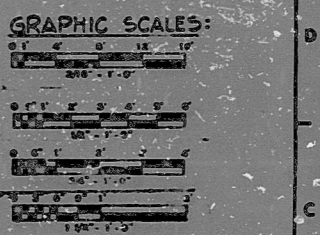


NOTES:

1. SEE NS 1086 FOR GENERAL NOTES
2. SEE SCHEDULE DWG NS 1086 FOR BLDG FINISHES
3. SEE NS 1383 & NS 1384 FOR STEEL GRID PLAN
4. SEE NS 1107 FOR DEPT FOR SCHEDULE
5. SEE NS 1195 FOR DEPT FOR SCHED
6. SEE NS 1178 FOR NS 1086
7. SEE NS 1180 FOR PENETRATION LISTS
8. SEE NS 1086 FOR TYP LADDER DETAIL
9. SEE NS 508 FOR TYP LADDER DETAIL

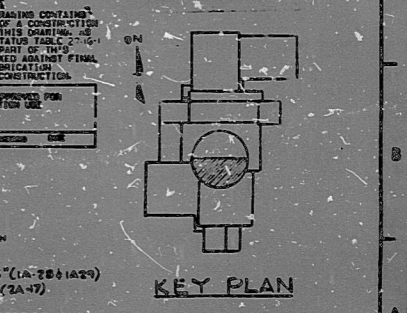
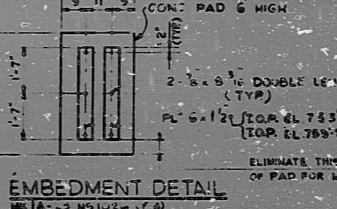
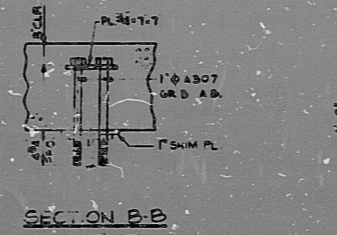
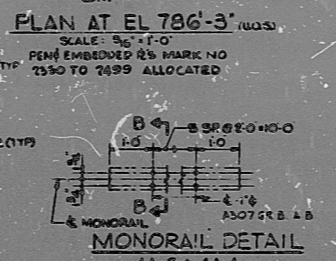
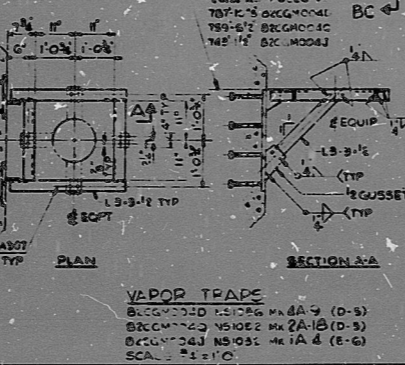
REFERENCE DRAWINGS:
SEE NS 1078 & NS 1082

LEGEND:
SEE NS 1076



EMBEDDED PLATE SCHEDULE

MARK	SIZE	DETAIL	LOC FROM GRID	REF DWGS.	REMARKS
P2380	D-5	18	NS 1086	C 75'-0" W 8'-5"	TO E.L. 785'-9" FOR W8 COL.
P2381					



NO.	REVISION	DATE	BY	CHKD.	APP'D.	REVISION	DATE	BY	CHKD.	APP'D.	REVISION	DATE	BY	CHKD.	APP'D.	REVISION	DATE	BY	CHKD.	APP'D.	
1	FOR PREVIOUS REVISIONS SEE RECORD MAP																				
2	REVISED DETAIL NO. (HANDRAIL POST ARRANGEMENT, RAILING TYPE & SYMBOL (E-2) CINDT SM-100-105																				
3	ADDED DETAIL FOR EQUIPMENT MK 4A-21 (D-5) & MK 4A-22 (E-6) CINDT 27CS-DD-122G																				
4	ADDED DETAIL FOR EQUIPMENT MK 4A-28 (E-5) CINDT 27CS-DD-122G																				
5	ADDED HOLD #66000246 TO MK 4A-28 (E-5) CINDT 27CS-DD-122G																				
6	DELETED PEN 23-13 (D-5) CINDT 27AA/JC-1222																				

POOR ORIGINAL

NUCLEAR SAFETY RELATED (U.S.)

PROJECT MANAGEMENT CORP.

CLINCH BLDG. SHEET NO. NS 1086

ENGINEER AND ARCHITECTS

CLINCH BLDG. SHEET NO. NS 1086

REACTOR CONTAINMENT BUILDING PLAN AT EL. 786'-0" EOPY FOR PENETRATION 300 37

DWG NO. NS 1086

RIDS

8209030048

