

- NOTES:**
1. SEE NS1000 FOR GENERAL NOTES
 2. SEE C-TIME Dwg NS1001 FOR BLOC DIMENSIONS
 3. SEE NS1004 FOR FRAMING
 4. SEE NS1100 FOR QOPT FOR SCHEM
 5. SEE NS1100 FOR ANCHOR BOLT SCHEM
 6. SEE NS1110 THRU NS1170 FOR PENETRATION LIST
 7. SEE NS1120 FOR LINER PANEL DETAILS
 8. SEE NS1130 FOR FLOOR TRAILERS
 9. SEE NS1000 FOR TYP LADDER DETAILS

REFERENCE DRAWINGS:

SEE NS1002

RCB EXT WALL EMBEDMENT:

NS1220	EL 0' TO 90' R = 30'-0"
1221	90' 100'
1222	100' 270'
1223	270' 300'
1224	0' 90' R = 102'-1"
1225	90' 100'
1226	100' 270'
1227	270' 300'

RCB EXT WALL PEN EMBEDMENT:

1230	EL 0' TO 90'
1231	RCB INT WALL PEN EMBEDMENT EL. 1'
1232	RCB INT WALL PEN EL.
1233	RCB INT WALL PEN EL.

RCB ELEC PENETRATION LIST:

1846	1852	1853	1854	1855	1856	1857	1858	1859	1860	1861	1862	1863	1864	1865	1866	1867	1868	1869	1870	1871	1872
------	------	------	------	------	------	------	------	------	------	------	------	------	------	------	------	------	------	------	------	------	------

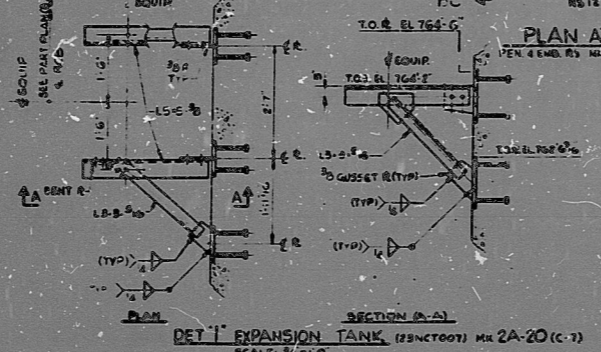
EMBEDDED PLATE SCHEDULE

MARK	ZONE	DETAIL	LOC FROM E.R.B.	REMARKS				
		TYPE	DWG	N	S	E	W	
P1752	10-6	IL	NS198	3-59'-0"	W26-5E			
P1753	7-0	IL	NS199	3-40'-1"	W26-5E			
P1754	6-0	IL	NS198	5-59'-6"	W23-6W			
P1755	6-0	IL	NS198	0-40'-11"	W21-6W			
P1756	7-6	IL	NS199	3-35'-5"	W26-5E			
P1757	8-0	IL	NS199	3-55'-0"	W23-6E			
P1758	8-0	IL	NS199	5-62'-4"	W26-5E			
P1759	8-0	IL	NS199	3-42'-4"	W23-6E			

DOWNTURN J TO H₂O HEAT EXCHANGER 23ND PUMP MK 2A-11 SEE PART PLAN (B-3)

TANK EXPANSION FOR 23ND PUMP MK 2A-20 ALSO SEE DET 1 (A-6) SEE PART PLAN (B-3)

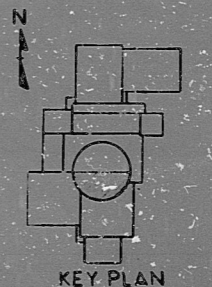
DOWNTURN J-PUMP 23ND PUMP MK 2A-12 SEE PART PLAN (B-3)



PLAN AT EL 752'-8" (U.S.S.)
 PEN EMBR BY ML NO 1750 TO 1759 ALLOCATED
 SCALE: 3/8" = 1'-0"

PART PLAN (B-7)
 SCALE: 3/8" = 1'-0"

PRC APERTURE CARD



LEGEND

SEE NS1000

GRAPHIC SCALE

0' 1" 2" 3" 4" 5" 6" 7" 8" 9" 10'

0' 1" 2" 3" 4" 5" 6" 7" 8" 9" 10'

0' 1" 2" 3" 4" 5" 6" 7" 8" 9" 10'

POOR ORIGINAL

NOTICE: INFORMATION ON THIS DRAWING CONTAINS ALL THE REQUIREMENTS OF A CONSTRUCTION SETTING. THE USER OF THIS DRAWING IS RESPONSIBLE FOR THE INTEGRITY OF THE DRAWING. THIS DRAWING IS AN INTEGRAL PART OF THE CONTRACT. NO CHANGES SHALL BE MADE WITHOUT THE WRITTEN APPROVAL OF THE DESIGNER. INFORMATION PRIOR TO CONSTRUCTION.

1. VALUE OF THIS DRAWING FOR PRC-CONTAINMENT BLDG



NUCLEAR SAFETY RELATED (U.S.)

PROJECT OFFICE APPROVED FOR CONSTRUCTION

Approved: _____ Date: _____

NO.	REVISION	DATE	BY	CHKD	APP'D	REVISION	NO.	DATE	BY	CHKD	APP'D	REVISION
1	FOR PREVIOUS REVISIONS SEE RECORD M.A.C.											
2	REVISED NOTE 4 N. INSTEAD OF POST ARRANGEMENT (EG. 31.5)											
3	RAILING TYPE, DETAIL N1 & SYMBOL CNDT SM-5/DD-105											
4	ADDED PENETRATION NR1758 (H-7) CNDT 27A/100-1222											

PROJECT MANAGEMENT CORP.

CLIENT: _____

DESIGNER: _____

CONTRACT NO.: _____

PROJECT: _____

NO. NS 1052

RIDS

82091039045

