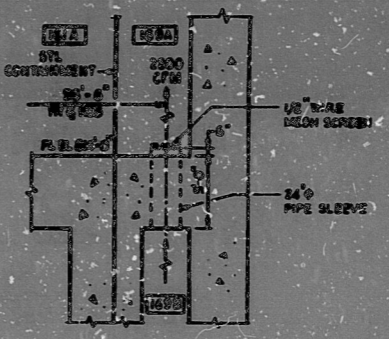
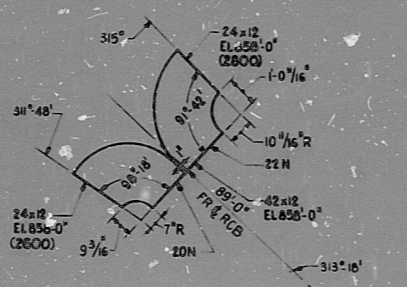


PLAN EL 816'-0" NW QDRNT

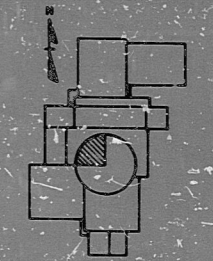


DETAIL 2  
SCALE 1/8" = 1'-0"



DETAIL 1  
N7S

PRC  
APERTURE  
CARD



KEY PLAN  
GRAPHIC SCALE  
0 1 2 3 4 5 6 7 8 9 10  
1" = 10'-0"

NUCLEAR SAFETY RELATED  
(AS NOTED)

| NO. | REVISION | DATE | BY | CHKD | APP'D | DESCRIPTION                                   |
|-----|----------|------|----|------|-------|---|
| 0   |          |      |    |      |       | B&R APPROVED FOR PROJECT USE                  |
| 1   |          |      |    |      |       | ADDED 24" AIR TRANSFER PIPE (J6), DET. 2 (T3) |
| 2   |          |      |    |      |       | ADDED CELL NOS. (C4)(T5)                      |
| 3   |          |      |    |      |       | REVISED INSTRUMENT NO: TT-63B WAS TT-63D (H4) |
| 4   |          |      |    |      |       | REVISED DUCTWORK (B8)(J4)                     |

**CRBRP PROJECT OFFICE**  
 CHIEF ENGINEER: [Signature]  
 PROJECT ENGINEER: [Signature]  
 PROJECT MANAGER: [Signature]  
 PLAN EL 816'-0" NW QDRNT  
 REACTOR CONTAINMENT BUILDING  
 NV1005



R.135

8209030039

