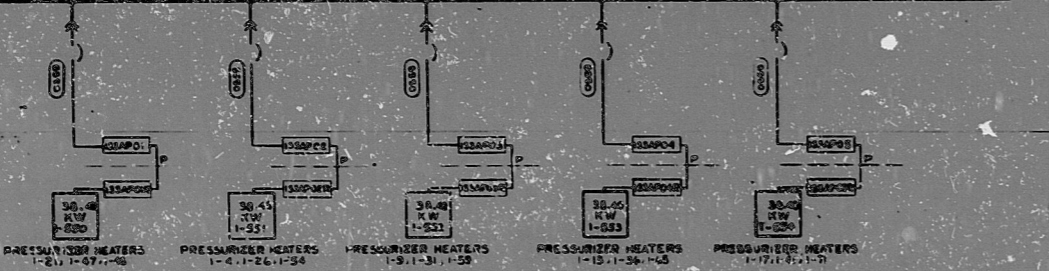


TO 480 V BUS I-13 200 13303 VIA 304
DWS 23703-0-228

PRESSURIZER HEATER CONTROL GROUP IC

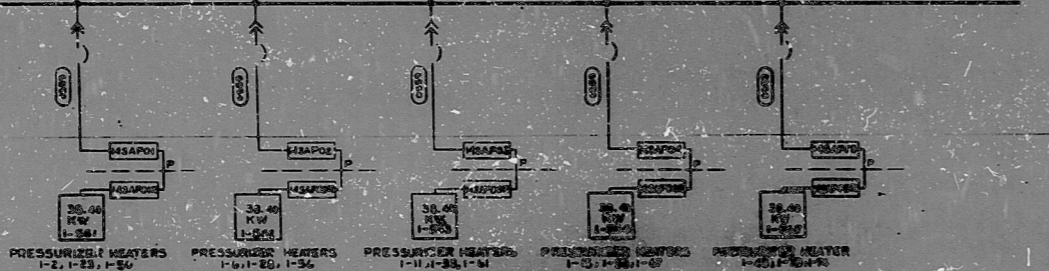
480 V BUS I-93A (332)



TO 480 V BUS I-13 200 13304
DWS 23703-0-228

PRESSURIZER HEATER BACKUP GROUP IE

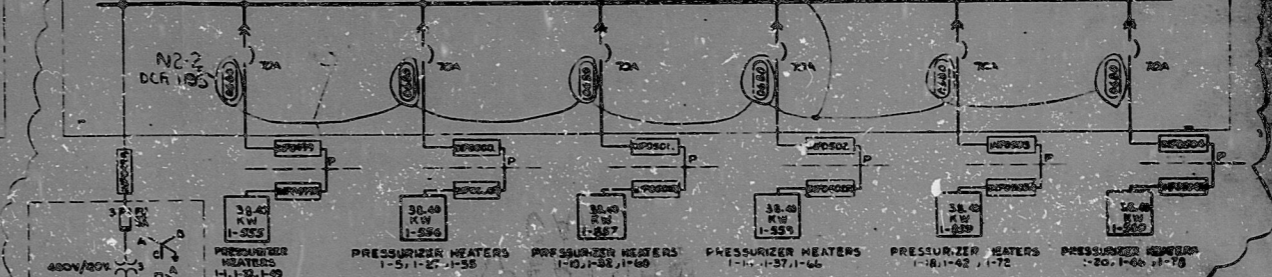
480 V BUS I-43A (333)



N2-1
DCR # 1195

PRESSURIZER HEATER BACK-UP GROUP IA

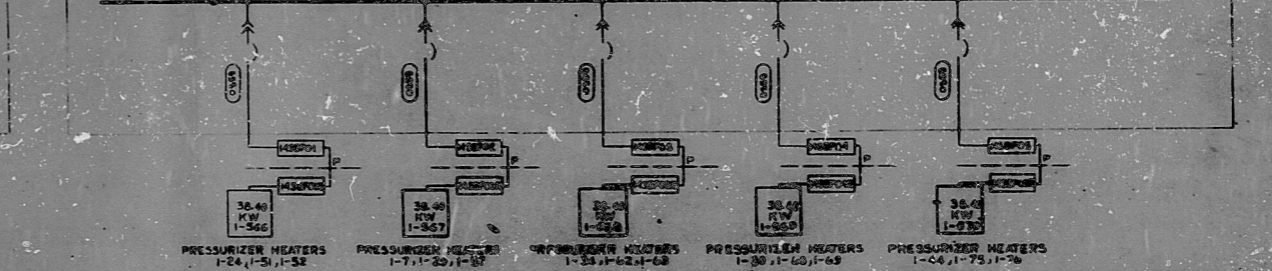
480 V BUS I-3352 (330)



N2-2
DCR 1195

PRESSURIZER HEATER BACK-UP GROUP ID

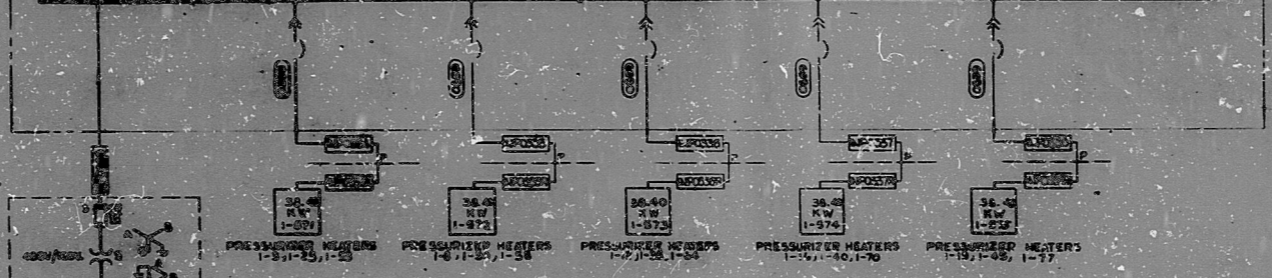
480 V BUS I-43B (332)



TO 480 V BUS I-13 200 13304
DWS 23703-0-228

PRESSURIZER HEATER BACK-UP GROUP IB

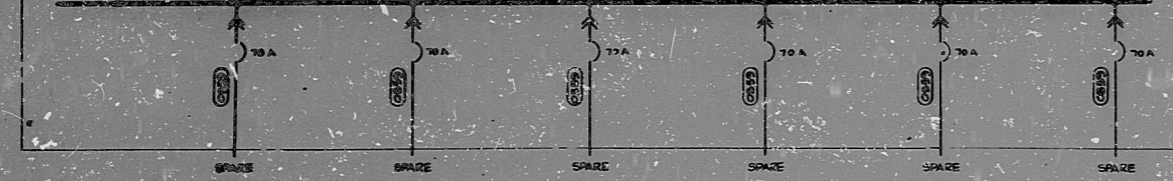
480 V BUS I-63A (333)



N2-1
DCR # 1195

(SPARE MCC)

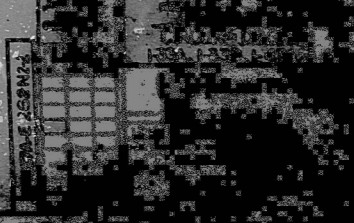
480 V BUS I-33B (332)



PRO APERTURE CARD

- REFERENCES:
- 1. (NO) - NO MORE MATTER
 - 2. (NO) - NO MORE ELECTRICAL MATTER
 - 3. ALL ELECTRICAL CONNECTIONS TO BE MADE IN ACCORDANCE WITH THE ELECTRICAL CODE AND THE PRESSURIZER HEATER DATA SHEET.
 - 4. FOR WIRING DETAILS SEE ELECTRICAL CONNECTIONS PRESSURIZER HEATERS DATA SHEET.
 - 5. JP - DENOTES ELECTRICAL PENETRATION

N2-1
DCR # 1195



3080120803

RIDS

8309120503

