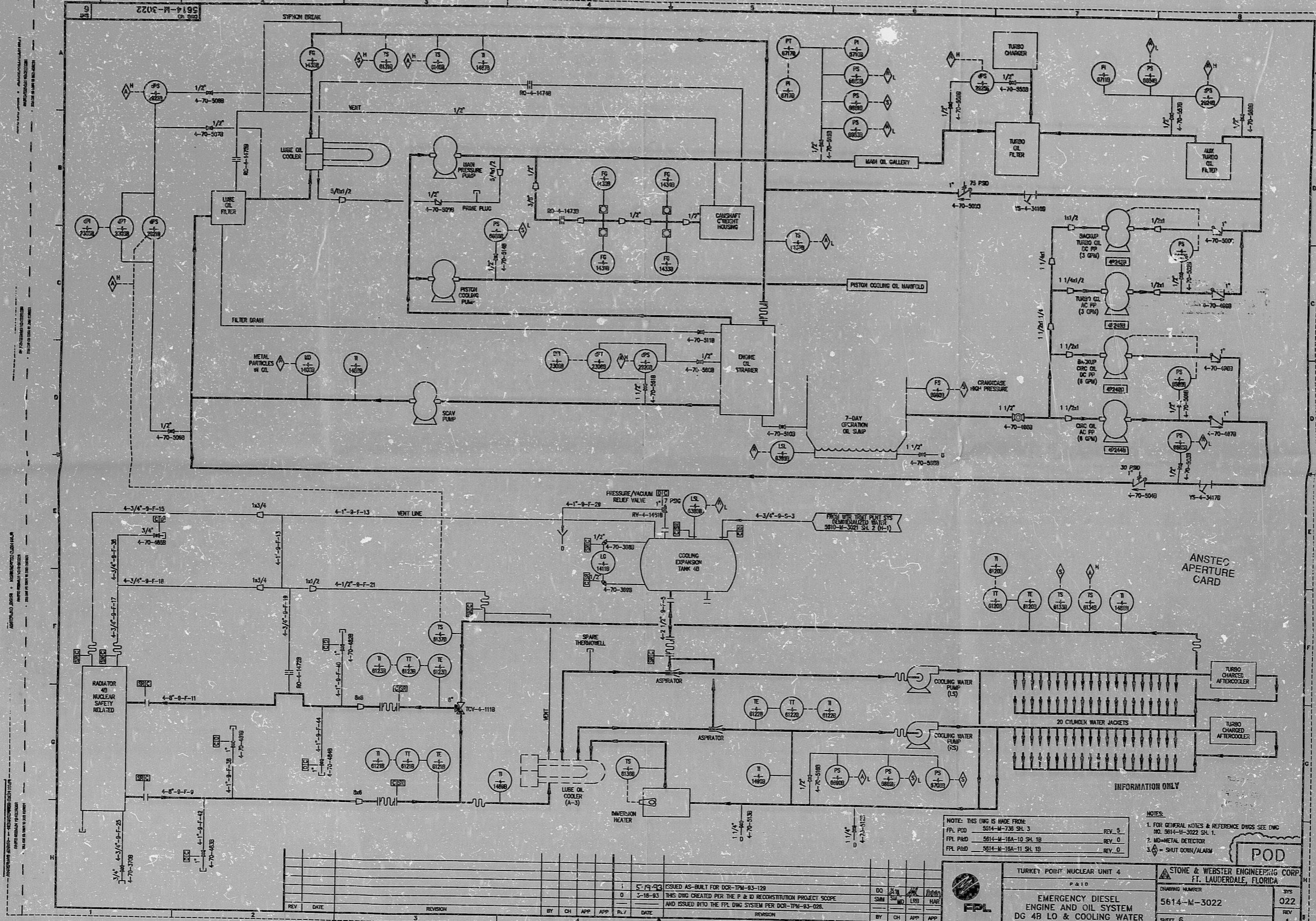


5614-M-3022 SH.3 REV.1



5614-M-3022 SH.3 REV.1

REVISIONS:

| REV | DATE | REVISION | BY | CH | APP | APP | DATE |
|-----|---------|---------------------------------------------------------------------------------------------------------------------|----|----|-----|-----|------|
| 1 | 5-19-83 | ISSUED AS-BUILT FOR DCR-TPM-83-129 | | | | | |
| 0 | 3-18-83 | THIS DWG CREATED PER THE P & ID RECONSTRUCTION PROJECT SCOPE AND ISSUED INTO THE FPL DNG SYSTEM PER DCR-TPM-83-026. | | | | | |

NOTES: THIS DWG IS MADE FROM:
 FPL POD 5014-M-738 SH. 3
 FPL PAD 5614-M-10A-10 SH. 18
 FPL PAD 5614-M-10A-11 SH. 19

REV. 5
 REV. 0
 REV. 0

NOTES:
 1. FOR GENERAL NOTES & REFERENCE DWGS SEE DNG NO. 5614-M-3022 SH. 1.
 2. MD-METAL DETECTOR
 3. SHUT DOWN/ALARM

POD

TURKEY POINT NUCLEAR UNIT 4
 PAID

EMERGENCY DIESEL ENGINE AND OIL SYSTEM
 DG 4R LO & COOLING WATER

STONE & WEBSTER ENGINEERING CORP.
 FT. LAUDERDALE, FLORIDA

DRAWING NUMBER: 5614-M-3022
 SHEET 6

375
 022
 1

UTL00227.DWG

9406210209

PDR RIBS

