

5614-M-3030 SH. 1

- NOTES:
- FOR GENERAL NOTES & LEGEND SEE DWG NO. 5610-M-3000 SH. 2.
 - DELETED.

INFORMATION ONLY

THIS DRAWING SUPERSEDES DRAWINGS:

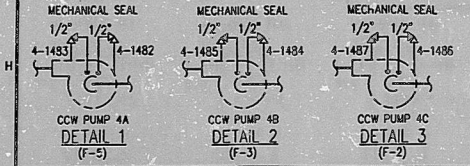
- 5610-M-450-57 SH. 6 REV. 21
- 5610-M-450-57 SH. 7 REV. 15
- 5610-M-450-92 SH. 6 REV. 5
- 5610-M-450-92 SH. 7 REV. 4
- 5610-M-372 REV. 3
- 5610-M-343 REV. 8

NOTE: THIS DWG IS MADE FROM: 5610-T-4-4512 SH. 1 REV. 58.

REFERENCE DRAWINGS:

- 5614-M-3030 SERIES
- 5614-M-3019 SH. 1
- 5614-M-3047 SH. 1
- 5614-M-3094 SH. 1
- 5613-M-3030 SH. 2&3
- 5610-M-3021 SH. 1
- 5610-M-3061 SERIES
- 5614-M-3050 SH. 1
- 5614-M-3033 SH. 1
- 5613-M-3062 SH. 1
- 5614-M-3062 SH. 1
- 5610-T-U-240&24E

COMPONENT COOLING WATER SYSTEM
 INTAKE COOLING WATER SYSTEM
 CHEMICAL & VOLUME CONTROL SYSTEM
 - CHARGING & LETDOWN
 CONTAINMENT POST ACCIDENT EVALUATION SYSTEM
 COMPONENT COOLING WATER SYSTEM WATER TREATMENT PLANT SYSTEM
 - FILTRATION
 WASTE DISPOSAL SYSTEM
 RESIDUAL HEAT REMOVAL SYSTEM
 SPENT FUEL POOL COOLING SYSTEM
 SAFETY INJECTION SYSTEM
 SAFETY INJECTION SYSTEM
 LOGIC DIAGRAMS - COMPONENT COOLING PUMPS



REV	DATE	REVISION	BY	CH	APP	APP	REV	DATE	REVISION	BY	CH	APP	APP
6	03-06-93	ISSUED AS-BUILT FOR DCR-TPM-93-075.	SM	AS	WMC	WMC	6	03-06-93	ISSUED AS-BUILT FOR DCR-TPM-93-075.	DO	INITIALS ON FILE		
5	2-10-93	ISSUED AS-BUILT FOR DCR-TPM-92-400, PC/M 92-090/PC/M 89-184	RH	RV	JMK	BO	5	2-10-93	ISSUED AS-BUILT FOR DCR-TPM-92-400, PC/M 92-090/PC/M 89-184	TAM	INITIALS ON FILE		
4	06-15-93	ISSUED AS-BUILT FOR PC/M 93-024.	RH	RV	JMK	32	4	06-15-93	ISSUED AS-BUILT FOR PC/M 93-024.	RMB	MD	LSB	
3	04-01-93	ISSUED AS-BUILT FOR PC/M 92-087.	LSM	NA	LK	MTL	3	04-01-93	TWO DWG CREATED FOR THE P & ID RECONSTRUCTION PROJECT SCOPE				
2							2		AND ISSUED INTO THE FPL DWG SYSTEM FOR DCR-TPM-91-135.				

TURKEY POINT NUCLEAR UNIT 4		STONE & WEBSTER ENGINEERING CORP. FT. LAUDERDALE, FLORIDA	
P & ID		DRAWING NUMBER	
COMPONENT COOLING WATER SYSTEM		5614-M-3030	
		SYS	
		10	
		REV	
		10	
		REV	
		10	
		REV	
		10	
		REV	
		10	

POD

UTMGL02.DWG

94406210207

PDR RIDS

