

5613-M-3030 SH. 1

- NOTES:**
- FOR GENERAL NOTES & LEGEND SEE DWG NO. 5610-M-3000 SH. 2.
 - DELETED.
 - FOR PUMP CONTROL LOGIC SEE DWG NO. 5610-T-11 SH. 240 & 241.

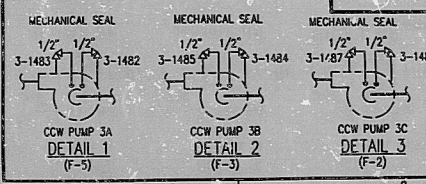
INFORMATION ONLY

THIS DRAWING SUPERSEDES DRAWINGS:
 5610-M-450-57 SH. 6 REV. 21
 5610-M-450-57 SH. 7 REV. 15
 5610-M-450-92 SH. 8 REV. 5
 5610-M-450-92 SH. 7 REV. 4
 5610-M-372 REV. 3
 5610-M-343 REV. 9

REFERENCE DRAWINGS:
 5613-M-3030 SERIES
 5613-M-3019 SH. 1
 5613-M-3041 SH. 1
 5613-M-3054 SH. 1
 5614-M-3030 SH. 2
 5610-M-3021 SH. 1
 5610-M-3061 SERIES
 5613-M-3050 SH. 1
 5613-M-3033 SH. 1
 5613-M-3062 SH. 1
 5614-M-3063 SH. 1
 5610-T-11 SHS. 240&241

COMPONENT COOLING WATER SYSTEM
 INTAKE COOLING WATER SYSTEM
 CHEMICAL & VOLUME CONTROL SYSTEM - CHARGING & LETDOWN
 CONTAINMENT POST ACCIDENT EVALUATION SYSTEM
 COMPONENT COOLING WATER SYSTEM
 WATER TREATMENT PLANT SYSTEM - FILTRATION
 WASTE DISPOSAL SYSTEM
 RESIDUAL HEAT REMOVAL SYSTEM
 SPENT FUEL POOL COOLING SYSTEM
 SAFETY INJECTION SYSTEM
 SAFETY INJECTION SYSTEM
 LOGIC DIAGRAMS - COMPONENT COOLING PUMPS

NOTE: THIS DWG IS MADE FROM: F.I. POD 5610-T-11-4312 SH. 1 REV. 33



REV	DATE	REVISION	BY	CH	APP	APP	REV	DATE	REVISION
5	02-15-93	ISSUED AS-BUILT FOR DCR-TPM-93-055.	CHW	RKS	LJK	JRH	7	3-6-93	ISSUED AS-BUILT FOR DCR-TPM-93-075.
5	2-10-93	ISSUED AS-BUILT FOR DCR-TPM-92-0400 AND PC/M 92-090.	TAM	INITIALS ON FILE			3	11-18-92	ISSUED AS-BUILT FOR PC/M 87-321; INCOMP CRN-M-5584.
4	12-17-92	ISSUED AS-BUILT FOR PC/M 89-542 AND CRN-M-5567 WITH EXTENSIVE CHANGES TO BOUNDARY FLAGS - NO FLAG REVISION CLOUDS USED.	SMM	MD	LRB	HJR	9	2-10-93	ISSUED AS-BUILT FOR DCR-TPM-93-348.
		ISSUED AS-BUILT FOR DCR-TPM-92-215.					8	9-10-93	ISSUED AS-BUILT FOR DCR-TPM-93-335.

DO	INITIALS	ON FILE
AW	AJ	LTB
SAW	AD	ACG
BN	AM	DU
BY	CH	APP

TURKEY POINT NUCLEAR UNIT 3
 P. 1.0
COMPONENT COOLING WATER SYSTEM

STORE & WEBSTER ENGINEERING CORP.
 FT. LAUDERDALE, FLORIDA
 DRAWING NUMBER: 5613-M-3030
 SHEET 1
 SYS 030
 REV 9

POD

UTM00097.036

9406210172

PDR RIDS

