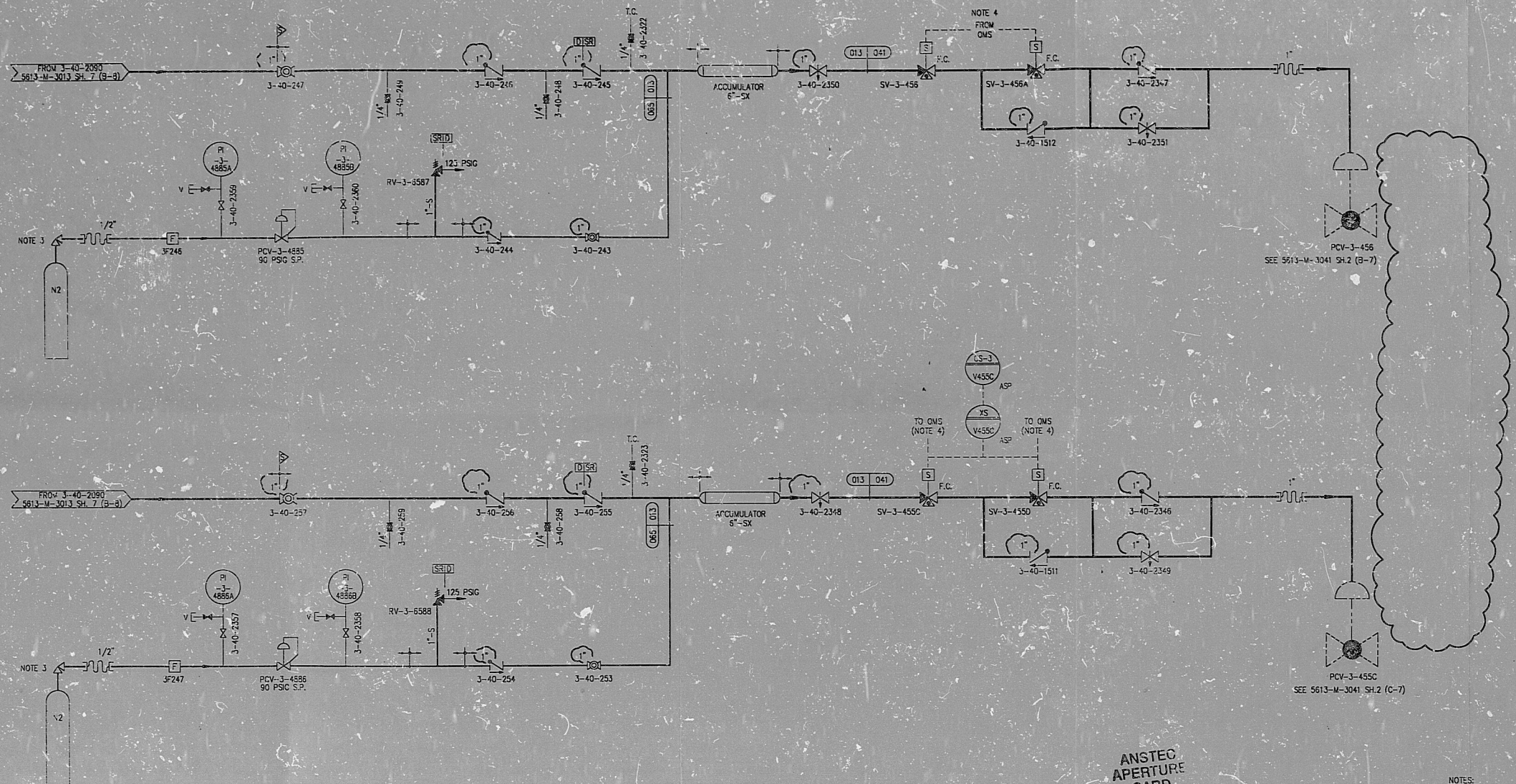


5613-M-3041  
ON DWG



ANSTEC  
APERTURE  
CARD

- NOTES:
1. FOR GENERAL NOTES & REFERENCE DWGS SEE DWG NO. 5613-M-3041 SH. 1.
  2. DELETED.
  3. THESE VALVES ARE FURNISHED WITH THEIR ASSOCIATED NITROGEN BOTTLES.
  4. FOR CONTROL LOGIC SEE DWG NO. 5610-F-D-16A & 16B.

INFORMATION ONLY

POD

REV	DATE	REVISION	BY	CHK	APP	APP	REV	DATE	REVISION	BY	CHK	APP	APP
4	9-20-93	ISSUED AS-BUILT FOR DCR-TPM-93-309 AND PCM 93-084.	SMH	MD	LK	LRH							
3	2-7-93	ISSUED AS-BUILT FOR DCR-TPM-93-075.	SP	MDW	LK	MEM							
2	2-7-93	ISSUED AS-BUILT FOR PCM 92-090.	SP										
1	12-15-92	ISSUED AS-BUILT FOR PCM 89-542 AND DCR-TPM-92-215.	GFH										
0	2-15-91	THIS DWG CREATED PER THE P & ID RECONSTITUTION PROJECT SCOPE AND ISSUED INTO THE FPL DWG SYSTEM PER DCR-TPM-91-043.	GFH	HLG	AV	LRB							



TURKEY POINT NUCLEAR UNIT 3  
P & ID  
REACTOR COOLANT SYSTEM  
PORV CONTROL

STONE & WEBSTER ENGINEERING CORP.  
FT. LAUDERDALE, FLORIDA  
DRAWING NUMBER  
5613-M-3041  
SHEET 4

515  
041  
REV  
2

5613-M-3041 SH.4



9406210151

DR RIDS

