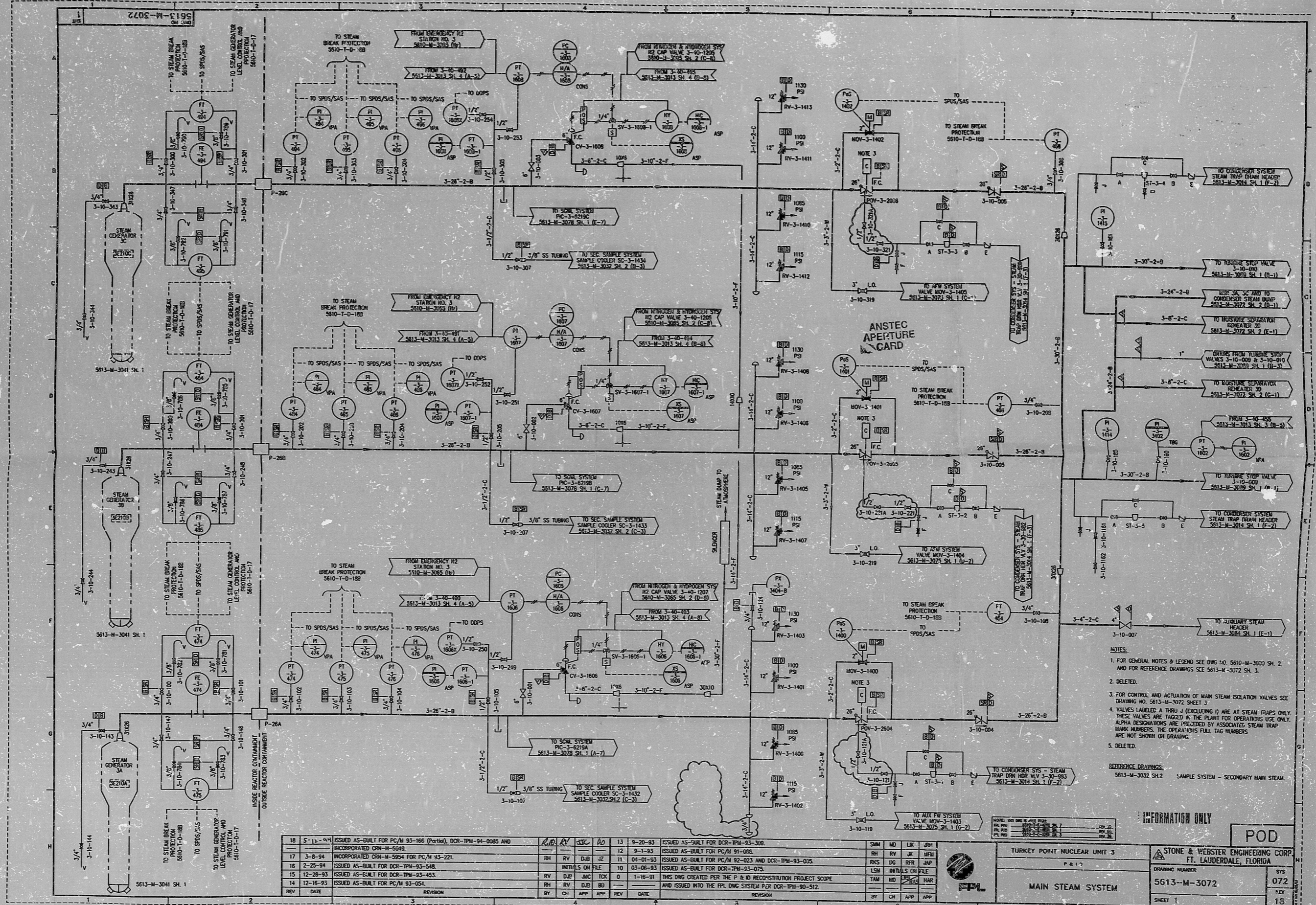


5613-M-3072 SHT. 1 REV. 16



REV	DATE	REVISION	BY	CHK	APP	REV	DATE	REVISION
18	5-13-94	ISSUED AS-BUILT FOR PC/M 93-166 (Partial), DCR-TPM-94-0085 AND INCORPORATED ORN-M-5019	RH	RV	DD	13	9-20-93	ISSUED AS-BUILT FOR DCR-TPM-93-300
17	3-8-94	INCORPORATED ORN-M-5014 FOR PC/M 93-221	RH	RV	DD	12	9-1-93	ISSUED AS-BUILT FOR PC/M 91-006
16	2-29-94	ISSUED AS-BUILT FOR DCR-TPM-93-548	RH	RV	DD	11	04-01-93	ISSUED AS-BUILT FOR PC/M 92-023 AND DCR-TPM-93-005
15	12-28-93	ISSUED AS-BUILT FOR DCR-TPM-93-453	RH	DJR	DD	10	03-06-93	ISSUED AS-BUILT FOR DCR-TPM-93-075
14	12-16-93	ISSUED AS-BUILT FOR PC/M 93-054	RH	RV	DD	9	1-16-91	THIS DWG CREATED PER THE P & R RECONSTRUCTION PROJECT SCOPE AND ISSUED INTO THE PPL DWS SYSTEM PER DCR-TPM-90-512

SYMBOL	DESCRIPTION
SHM	MD LK JSH
RH	RV JK MFM
RKS	DC RFR JAP
LSM	INTIALS ON FILE
TAM	MD HAR
BY	CHK APP

- NOTES:
- FOR GENERAL NOTES & LEGEND SEE DWG NO. 5610-M-3000 SH. 2. AND FOR REFERENCE DRAWINGS SEE 5613-M-3072 SH. 3.
 - DELETED.
 - FOR CONTROL AND ACTUATION OF MAIN STEAM ISOLATION VALVES SEE DRAWING NO. 5613-M-3072 SHEET 3.
 - VALVES LABELED A THRU J (EXCLUDING I) ARE AT STEAM TRAPS ONLY. THESE VALVES ARE TAGGED IN THE PLANT FOR OPERATIONS USE ONLY. ALPHA DESIGNATIONS ARE PRECEDED BY ASSOCIATED STEAM TRAP MARK NUMBERS. THE OPERATIONS FULL TAG NUMBERS ARE NOT SHOWN ON DRAWING.
 - DELETED.

REFERENCE DRAWINGS:
5613-M-3032 SH.2 SAMPLE SYSTEM - SECONDARY MAIN STEAM.

INFORMATION ONLY

POD

TURKEY POINT NUCLEAR UNIT 3
P 817

STONE & WEBSTER ENGINEERING CORP.
FT. LAUDERDALE, FLORIDA

DRAWING NUMBER: 5613-M-3072
SHEET 1

SYMBOL: 072
REV: 16
UTM00181.DWG

9406210143

PDR RIDS

