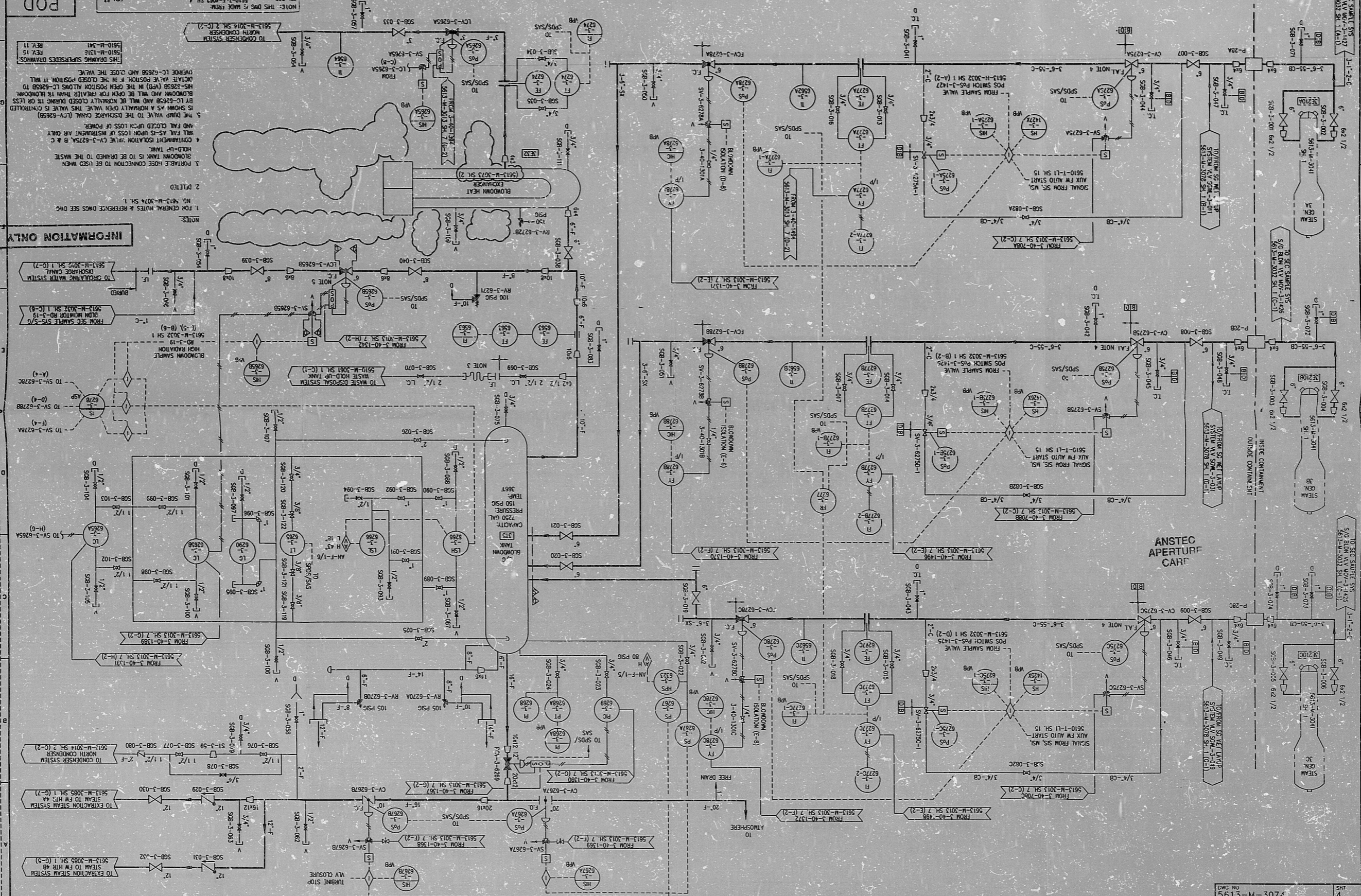


5613-M-3074 SH.4

REV.	DATE	DESCRIPTION
10	10-1-83	ISSUED AS-BUILT FOR DCR-TM-93-109
9	8-20-83	ISSUED AS-BUILT FOR DCR-TM-93-109
8	8-20-83	ISSUED AS-BUILT FOR DCR-TM-93-109
7	8-20-83	ISSUED AS-BUILT FOR DCR-TM-93-109
6	5-15-83	ISSUED AS-BUILT FOR DCR-TM-93-109
5	5-15-83	ISSUED AS-BUILT FOR DCR-TM-93-109
4	12-22-82	ISSUED AS-BUILT FOR DCR-TM-93-109
3	8-5-82	ISSUED AS-BUILT FOR DCR-TM-93-109
2	5-14-81	ISSUED AS-BUILT FOR DCR-TM-93-109
1	5-14-81	ISSUED AS-BUILT FOR DCR-TM-93-109



INFORMATION ONLY

1. FOR GENERAL NOTES & REFERENCE NOTES SEE DWG. NO. 5613-M-3074 SH.1

2. DELETED

3. PORTABLE HOSE CONNECTION TO BE USED WHEN HOLD-UP TANK IS TO BE DELETED TO THE WASTE

4. CONTAMINANT ISOLATION VALVE CV-3-6275A, B & C AND FAIL-AS-IS UPON LOSS OF INSTRUMENT AIR ONLY

5. THE DUMP VALVE TO THE DISCHARGE CANAL (LC-6265B) AND FAIL-AS-IS UPON LOSS OF POWER

6. THE DUMP VALVE TO THE DISCHARGE CANAL (LC-6265B) IS SHOWN AS A NORMALLY CLOSED VALVE. THIS VALVE IS CONTROLLED BY LC-6265B AND WILL BE NORMALLY CLOSED DURING THE BLOWDOWN AND WILL BE NORMALLY OPEN DURING THE BLOWDOWN AND WILL BE NORMALLY CLOSED DURING THE BLOWDOWN AND WILL BE NORMALLY OPEN DURING THE BLOWDOWN

7. THE DUMP VALVE TO THE DISCHARGE CANAL (LC-6265B) IS SHOWN AS A NORMALLY CLOSED VALVE. THIS VALVE IS CONTROLLED BY LC-6265B AND WILL BE NORMALLY CLOSED DURING THE BLOWDOWN AND WILL BE NORMALLY OPEN DURING THE BLOWDOWN

8. THE DUMP VALVE TO THE DISCHARGE CANAL (LC-6265B) IS SHOWN AS A NORMALLY CLOSED VALVE. THIS VALVE IS CONTROLLED BY LC-6265B AND WILL BE NORMALLY CLOSED DURING THE BLOWDOWN AND WILL BE NORMALLY OPEN DURING THE BLOWDOWN

NOTES

1. FOR GENERAL NOTES & REFERENCE NOTES SEE DWG. NO. 5613-M-3074 SH.1

2. DELETED

3. PORTABLE HOSE CONNECTION TO BE USED WHEN HOLD-UP TANK IS TO BE DELETED TO THE WASTE

4. CONTAMINANT ISOLATION VALVE CV-3-6275A, B & C AND FAIL-AS-IS UPON LOSS OF INSTRUMENT AIR ONLY

5. THE DUMP VALVE TO THE DISCHARGE CANAL (LC-6265B) AND FAIL-AS-IS UPON LOSS OF POWER

6. THE DUMP VALVE TO THE DISCHARGE CANAL (LC-6265B) IS SHOWN AS A NORMALLY CLOSED VALVE. THIS VALVE IS CONTROLLED BY LC-6265B AND WILL BE NORMALLY CLOSED DURING THE BLOWDOWN AND WILL BE NORMALLY OPEN DURING THE BLOWDOWN

7. THE DUMP VALVE TO THE DISCHARGE CANAL (LC-6265B) IS SHOWN AS A NORMALLY CLOSED VALVE. THIS VALVE IS CONTROLLED BY LC-6265B AND WILL BE NORMALLY CLOSED DURING THE BLOWDOWN AND WILL BE NORMALLY OPEN DURING THE BLOWDOWN

8. THE DUMP VALVE TO THE DISCHARGE CANAL (LC-6265B) IS SHOWN AS A NORMALLY CLOSED VALVE. THIS VALVE IS CONTROLLED BY LC-6265B AND WILL BE NORMALLY CLOSED DURING THE BLOWDOWN AND WILL BE NORMALLY OPEN DURING THE BLOWDOWN

9406210124

PDR RIDS

