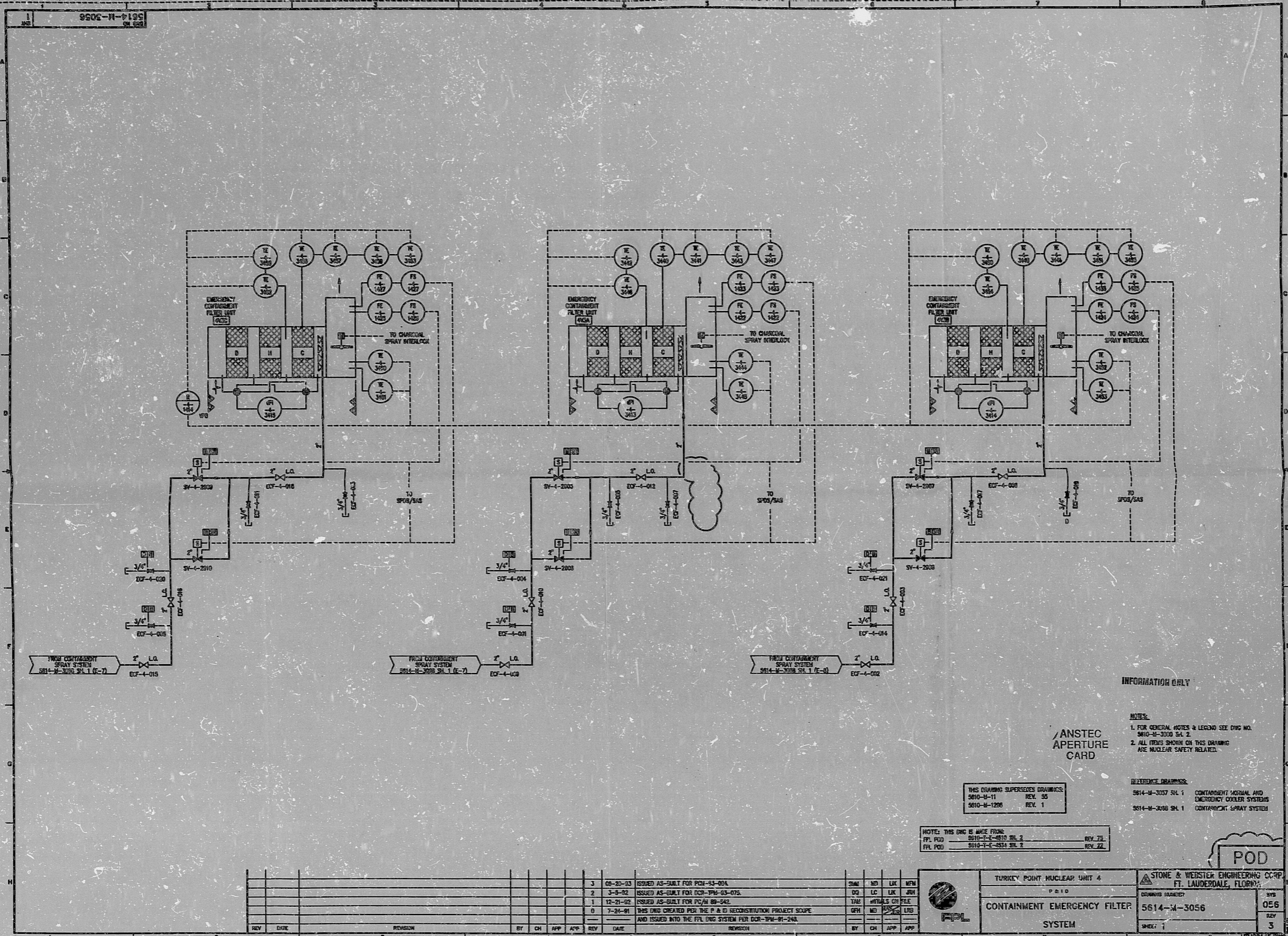


5614-M-3056 SH.1 REV.3



INFORMATION ONLY

- NOTES:**
1. FOR GENERAL NOTES & LEGEND SEE DWG NO. 5610-M-3000 SH.2
 2. ALL ITEMS SHOWN ON THIS DRAWING ARE NUCLEAR SAFETY RELATED.

ANSTEC
APERTURE
CARD

THIS DRAWING SUPERSEDES DRAWINGS:
5610-M-11 REV. 35
5610-M-1206 REV. 1

- REFERENCE DRAWINGS:**
- 5614-M-3007 SH.1 CONTAINMENT MEDICAL AND EMERGENCY COoler SYSTEM
 - 5614-M-3008 SH.1 CONTAINMENT SPRAY SYSTEM

NOTES THIS DWG IS ADDED FROM:
FPL PCD 5610-T-E-6810 SH.2 REV. 71
FPL PCD 5610-T-E-6534 SH.1 REV. 22

REV	DATE	REVISION	BY	CHK	APP	APP	REV	DATE	REVISION	BY	CHK	APP	APP
3	09-20-83	ISSUED AS-BUILT FOR PC#-83-00A											
2	3-9-82	ISSUED AS-BUILT FOR PC#-79M-83-07A											
1	12-21-82	ISSUED AS-BUILT FOR PC#-88-542											
0	7-24-81	THIS DWG CREATED FOR THE P & C RECONSTRUCTION PROJECT SCOPE AND ISSUED INTO THE FPL DWG SYSTEM PER DCR-79M-81-243.											

	TURKEY POINT NUCLEAR UNIT 4	STONE & WEDSTER ENGINEERING CC-PP FT. LAUDERDALE, FLORIDA
	CONTAINMENT EMERGENCY FILTER SYSTEM	5614-M-3056
	REV. 1	056 3

POD

UT000145.DWG

9406210056

PDR RIDS

