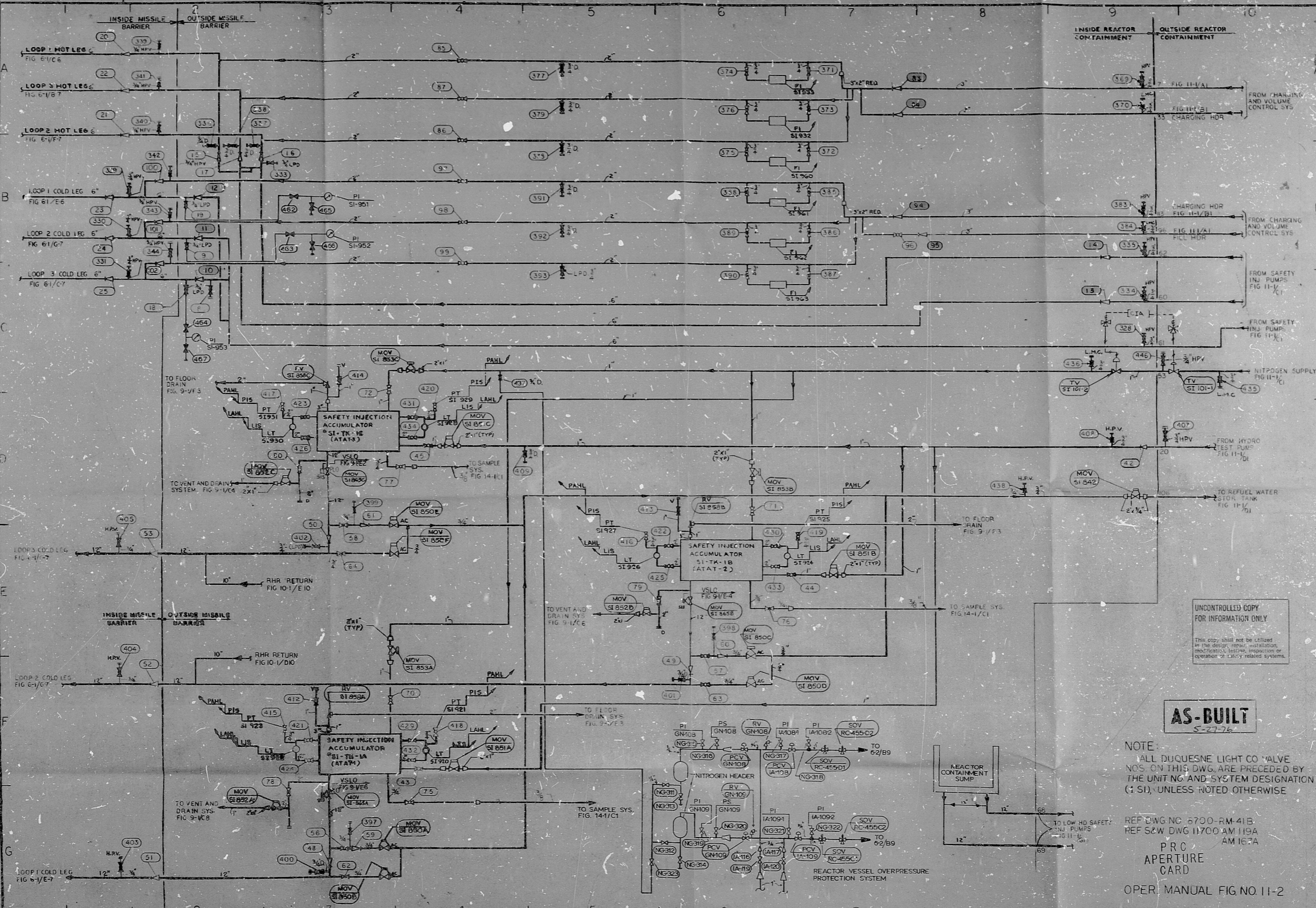


No. 8700-RM-167B



UNCONTROLLED COPY
FOR INFORMATION ONLY

This copy shall not be utilized for the design, repair, maintenance, modification, testing, inspection or operation of safety-related systems.

AS-BUILT
S-27-76

NOTE:
ALL DUQUESNE LIGHT CO VALVE NOS. ON THIS DWG. ARE PRECEDED BY THE UNIT NO. AND SYSTEM DESIGNATION (S); UNLESS NOTED OTHERWISE.

REF DWG NO. 8700-RM-41B
REF S&W DWG 11700-AM-119A AM 167A

PRC
APERTURE
CARD

OPER. MANUAL FIG NO. 11-2

5. UPDATED PER WALKDOWN 11/11/76 11/11/76		3. ISSUED WITH 08-418-11 AND 08-418-11 AS BUILT		2. UP DATED WITH 08-418-11		1.	
DUQUESNE LIGHT COMPANY ENGINEERING & CONSTRUCTION PITTSBURGH, PA.				VALVE OPER. NO. DIAG. SAFETY INJECTION SYSTEM S-I-2			
BEAVER VALLEY POWER STATION UNIT NO.				O.P.E. No. 4700 C.O. No. 1483			
AA No. 8700-RM-167B				S&W DWG. NO. 11700-AM-119A			
STONE & WEBSTER ENGINEERING CO. BOSTON, MASS.				SCALE: DATE: ARCH. APP. DRAWN: DIRECT. APP. CHECKED: ENGINEER, APP. DESIGNED:			

8208120282

R1BS

8208120282

