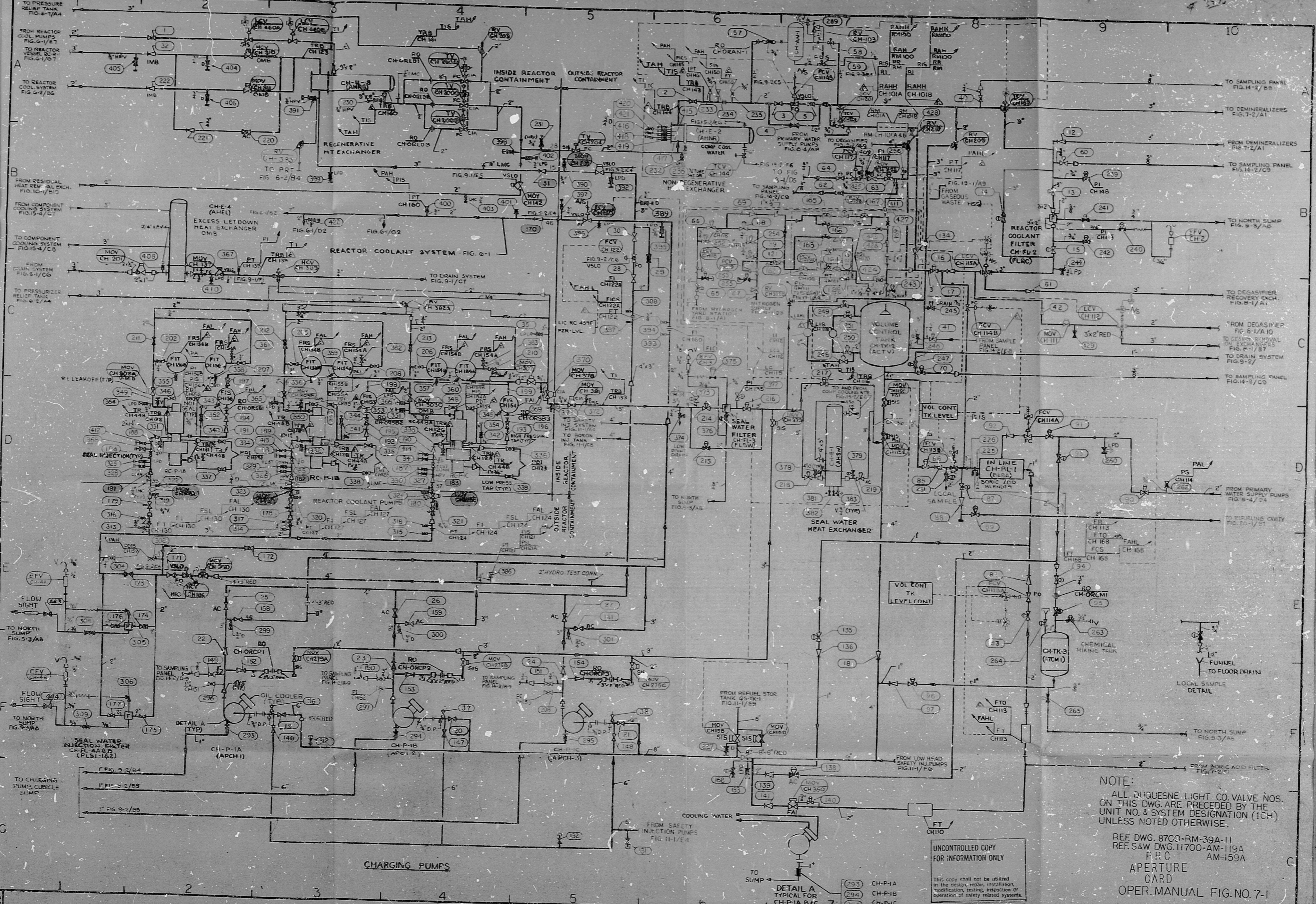


No. 8700-RM-159A



NOTE:  
 ALL DUKESNE LIGHT CO. VALVE NOS.  
 ON THIS DWG. ARE PRECEDED BY THE  
 UNIT NO. & SYSTEM DESIGNATION (ICH)  
 UNLESS NOTED OTHERWISE.

REF DWG. 8700-RM-39A-11  
 REF S&W DWG. 11700-AM-119A  
 P.P.C. AM-159A  
 APERTURE  
 CARD  
 OPER. MANUAL FIG. NO. 7-1

UNCONTROLLED COPY  
 FOR INFORMATION ONLY

This copy shall not be utilized  
 in the design, repair, installation,  
 modification, testing, inspection or  
 operation of safety related systems.

|   |  |   |  |
|---|--|---|--|
| 1 | REVISED AS PER<br>12-14-67 DEP. REP.           | 1 | REVISED AS PER<br>12-14-67 DEP. REP.           |
| 2 | OPERATING CONDITIONS<br>& OPERATING CONDITIONS | 2 | OPERATING CONDITIONS<br>& OPERATING CONDITIONS |
| 3 | UPDATE AS BUIL. 10/1/68                        | 3 | UPDATE AS BUIL. 10/1/68                        |
| 4 | 1/10 DATED TO RM-39A-11                        | 4 | 1/10 DATED TO RM-39A-11                        |

|         |             |         |             |
|---------|-------------|---------|-------------|
| DATE    | APPROV.     | DATE    | APPROV.     |
| DESIGN  | REACT. APP. | DESIGN  | REACT. APP. |
| CONSTR. | MECH. APP.  | CONSTR. | MECH. APP.  |
| INSTR.  | INSTR. APP. | INSTR.  | INSTR. APP. |

|  |         |
|--|---------|
| VALVE OPER. NO. DIAS                   | CH-101A |
| CHEMICAL & VOLUME CONTROL SYS. SH      | CH-101B |
| BEAVER VALLEY POWER STATION - UNIT NO. | CH-101C |
| D.P.E. NO. 8760                        | CH-101D |
| C.D. NO. 3483                          | CH-101E |
| AA No. 8700-RM-159A                    | CH-101F |

S&W DWG. NO. 11700-AM-159A-7  
 8208120273

RIDS

8208120273

