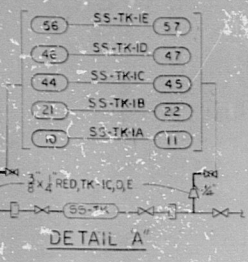
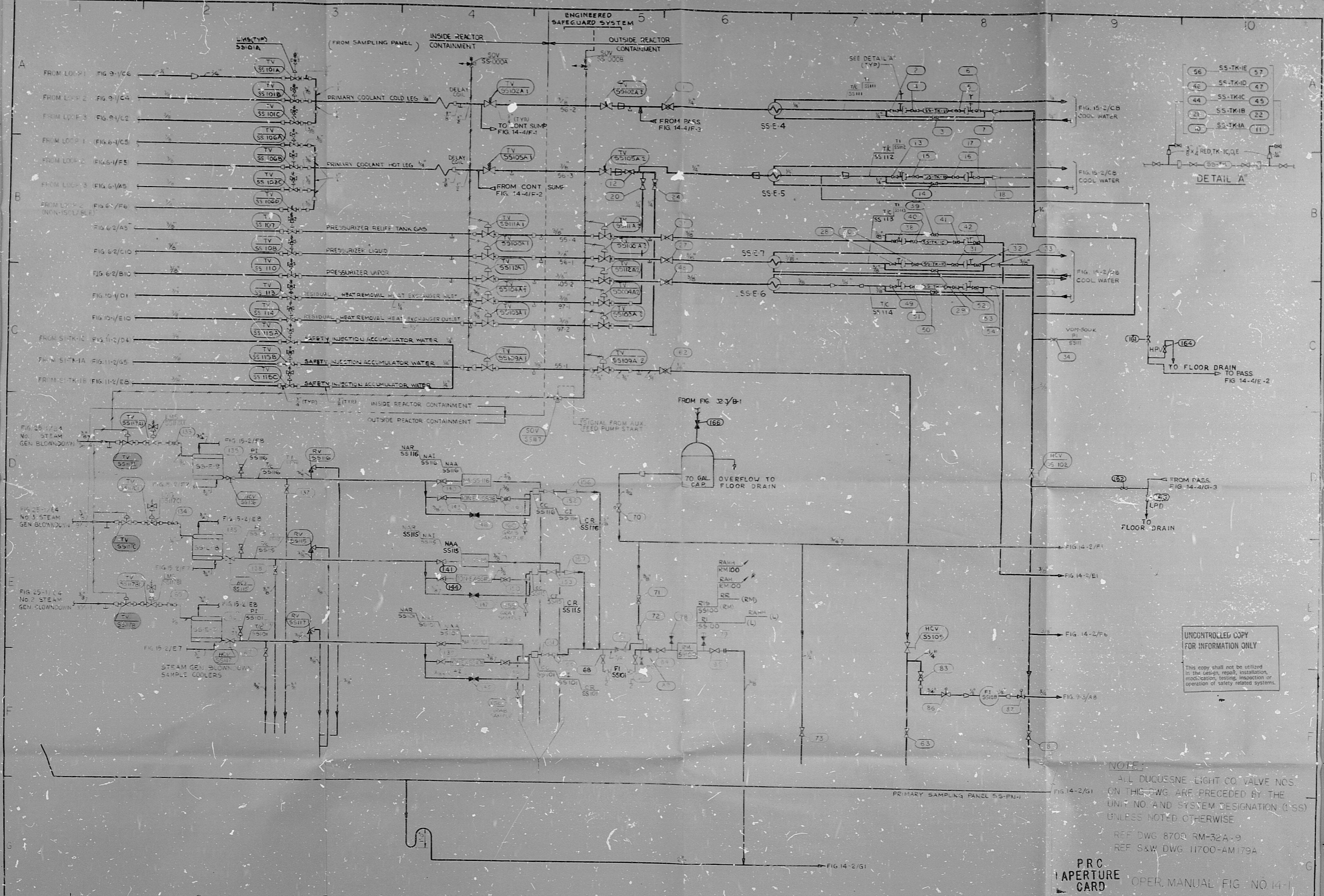


No. 8700-RM-179A



UNCONTROLLED COPY  
FOR INFORMATION ONLY

This copy shall not be utilized in the design, construction, installation, modification, testing, inspection or operation of safety related systems.

NOTE:  
ALL DUQUESNE EIGHT CO VALVE NOS ON THIS DWG ARE PRECEDED BY THE UNIT NO AND SYSTEM DESIGNATION (SS) UNLESS NOTED OTHERWISE

REF DWG 8700-RM-32A-9  
REF S&W DWG 11700-AM179A

P.R.C. APERTURE CARD OPER. MANUAL FIG. NO. 14-1

NO.	DATE	DESCRIPTION	BY	CHKD.	APP.
7	1/22/67	UPDATED AS PER P.F. 172			
6	1/22/67	REVISION 320 REV. 4			
5	1/22/67	REVISION 320 REV. 4			
4	1/22/67	REVISION 320 REV. 4			
3	1/22/67	REVISION 320 REV. 4			
2	1/22/67	REVISION 320 REV. 4			
1	1/22/67	REVISION 320 REV. 4			

DUQUESNE LIGHT COMPANY ENGINEERING & CONSTRUCTION PITTSBURGH, PA.		SCALE: DATE: 1/22/67 ARCH. APP.	
DRAWN: S. G. ELECT. APP.		CHECKED: MECH. APP.	
INSPECTED: D. L. STRUCT. APP.		VALVE GFER NO. DIAG. SYSTEM SH. 1	
STONE & WEBSTER ENGINEERING CORP. BOSTON, MASS.		HEAVER VALLEY POWER STATION UNIT-	
D.P.L. NO. 8700 C.O. NO. 3468		AA No. 8700-RM-179A	

S&W DWG. NO. 11700-RM-179-7  
8208120267

RIDS

8208120267

