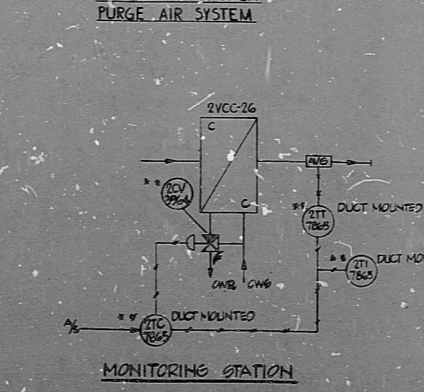
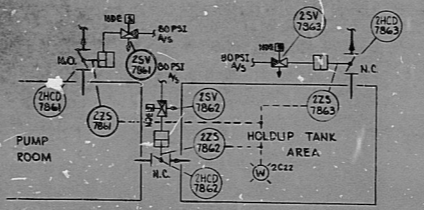
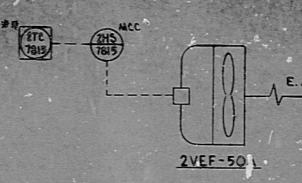
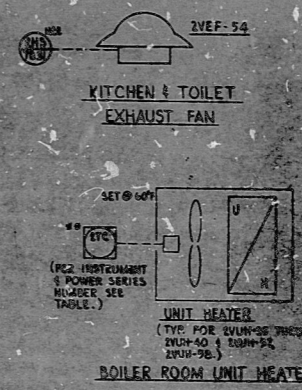
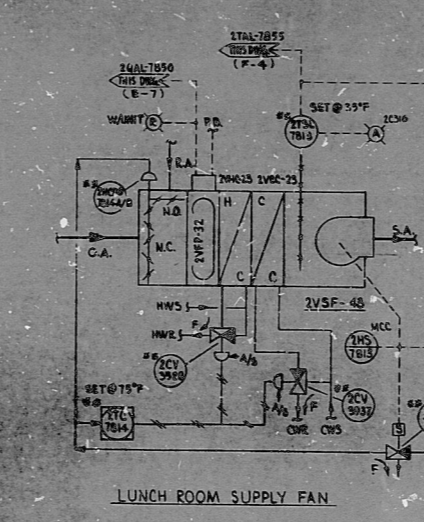
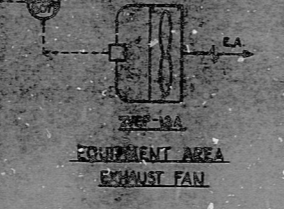
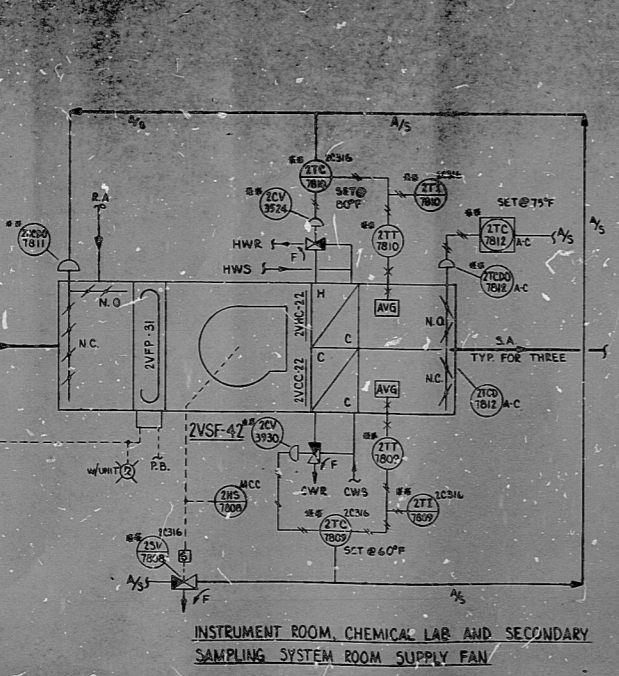
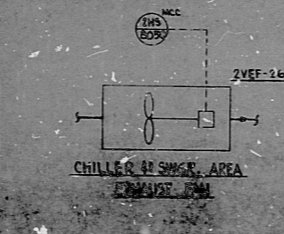
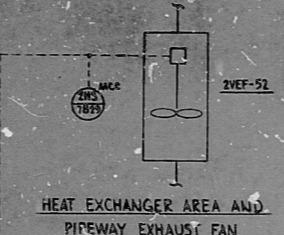
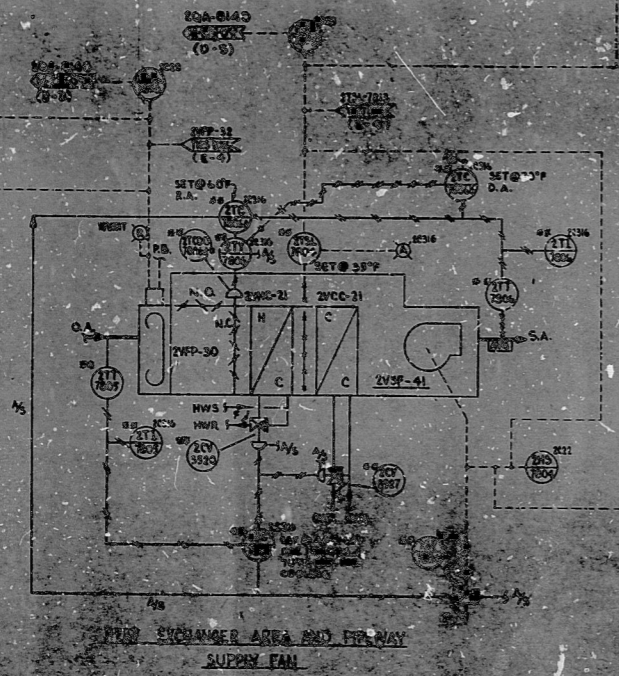


TABLE NO. 1		POWER SERIES NUMBER									
SUPPLY FAN	UNIT	100	101	102	103	104	105	106	107	108	109
2VFP-29	2VFP-29	2VFP-29	2VFP-29	2VFP-29	2VFP-29	2VFP-29	2VFP-29	2VFP-29	2VFP-29	2VFP-29	2VFP-29
2VFP-30	2VFP-30	2VFP-30	2VFP-30	2VFP-30	2VFP-30	2VFP-30	2VFP-30	2VFP-30	2VFP-30	2VFP-30	2VFP-30
2VFP-31	2VFP-31	2VFP-31	2VFP-31	2VFP-31	2VFP-31	2VFP-31	2VFP-31	2VFP-31	2VFP-31	2VFP-31	2VFP-31
2VFP-32	2VFP-32	2VFP-32	2VFP-32	2VFP-32	2VFP-32	2VFP-32	2VFP-32	2VFP-32	2VFP-32	2VFP-32	2VFP-32
2VFP-33	2VFP-33	2VFP-33	2VFP-33	2VFP-33	2VFP-33	2VFP-33	2VFP-33	2VFP-33	2VFP-33	2VFP-33	2VFP-33

TABLE NO. 2		POWER SERIES NUMBER	
UNIT	POWER SERIES NUMBER	UNIT	POWER SERIES NUMBER
2VUH-34	2VUH-34	2VUH-34	2VUH-34
2VUH-35	2VUH-35	2VUH-35	2VUH-35
2VUH-36	2VUH-36	2VUH-36	2VUH-36
2VUH-37	2VUH-37	2VUH-37	2VUH-37
2VUH-38	2VUH-38	2VUH-38	2VUH-38
2VUH-39	2VUH-39	2VUH-39	2VUH-39
2VUH-40	2VUH-40	2VUH-40	2VUH-40
2VUH-41	2VUH-41	2VUH-41	2VUH-41
2VUH-42	2VUH-42	2VUH-42	2VUH-42



- NOTES:**
- 1) FOR GENERAL NOTES LEGEND 4 REF DWG. SEC. DWG. M-2200.
  - 2) FOR AIR FLOW DIAGRAM SEE DWG. M-2159 SH-1.
  - 3) FOR LOGIC DIAGRAM SEE DWG. M-2453.
  - 4) \*\* INDICATES TO BE SUPPLIED BY SUB-CONTRACTOR.
  - 5) ALL ELECT. LINES SHOWN ON THIS DWG. ARE FOR REFERENCE ONLY. FOR DETAILS SEE ELECT. DWG.
  - 6) INSTRUMENTS SHOWN IN ABOVE TABLES ARE REFERENCE ONLY.
  - 7) ALL INSTRUMENTS WITH \*\* THAT ARE NOT LISTED IN ABOVE TABLES, SEE M/R M-2056.
  - 8) \* SUPPLIED WITH EQUIPMENT.

PRC  
APERTURE  
CARD

8208050515

NO.	DATE	REVISION	BY	CHKD.	APP'D.
1					
2					
3					
4					
5					

**BENTON CORPORATION**  
SAN FRANCISCO

**ARMEDS ENGINEERING COMPANY**  
ARMEDS ENGINEERING CO.  
UNIT-3

**HVAC CONTROL DIAGRAM**  
AUXILIARY BUILDING EXTENSION

M-2200

RIDS

8208050515

