

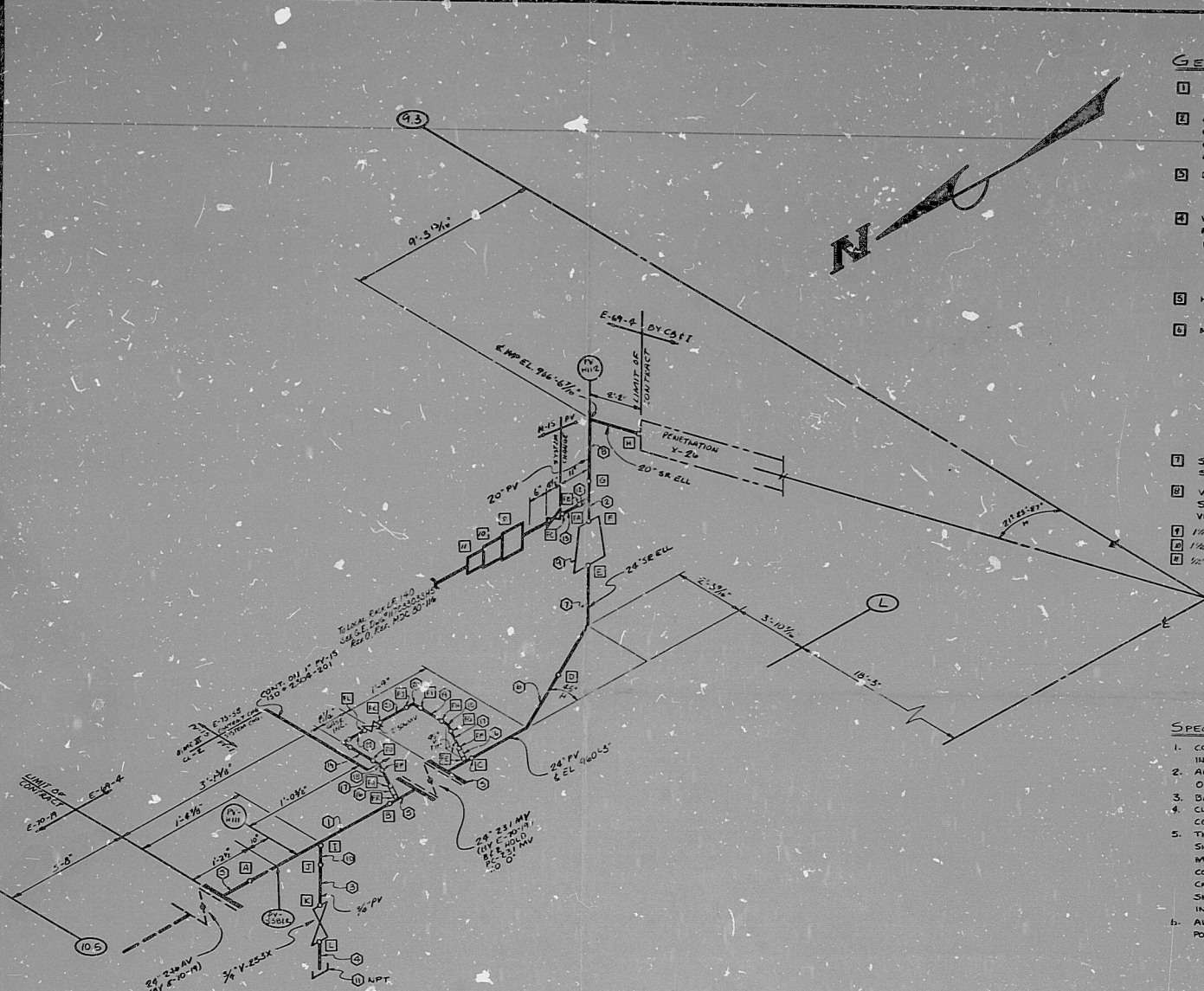
MATERIALS CLASSIFICATION						
CODE	DESCRIPTION	SIZE	CODE	DESCRIPTION	SIZE	
PI-K	PIPE	ON ORDER	WELD	PIPE	2 INCH	
F-1	FITTINGS		SOA	FITTINGS		
J-4	JOINTS		J-1	JOINTS		
FL-1	FLANGES					
D-3	DRIFTING					
G-1	GASKETS					

MATERIALS CARBON STEEL						
WELD NUMBER	JUNT TYPE	PIPE SIZE	SCH.	WELD TYPE	REMARKS	FIELD USE
RCO-755-3-A	J-4	24"	STD	A-234		
1	J-1	24"	STD	A-234		
2	J-1	24"	STD	A-234		
3	J-1	24"	STD	A-234		
4	J-1	24"	STD	A-234		
5	J-1	24"	STD	A-234		
6	J-1	24"	STD	A-234		
7	J-1	24"	STD	A-234		
8	J-1	24"	STD	A-234		
9	J-1	24"	STD	A-234		
10	J-1	24"	STD	A-234		
11	J-1	24"	STD	A-234		
12	J-1	24"	STD	A-234		
13	J-1	24"	STD	A-234		
14	J-1	24"	STD	A-234		
15	J-1	24"	STD	A-234		
16	J-1	24"	STD	A-234		
17	J-1	24"	STD	A-234		
18	J-1	24"	STD	A-234		
19	J-1	24"	STD	A-234		
20	J-1	24"	STD	A-234		
21	J-1	24"	STD	A-234		
22	J-1	24"	STD	A-234		

PIPE						
MARK NO.	QUANTITY	SIZE	SCH.	TYPE	CUT LENGTH	MATERIAL I.D. NUMBER
1	1	24"	STD	A-234	31.5	J-4
2	1	24"	STD	A-234	31.5	J-4
3	1	24"	STD	A-234	31.5	J-4
4	1	24"	STD	A-234	31.5	J-4
5	1	24"	STD	A-234	31.5	J-4

FLANGES						
MARK NO.	QUANTITY	SIZE	SCH.	TYPE	CUT LENGTH	MATERIAL I.D. NUMBER
5	3	24"	150	AW	FF	J-4

FITTINGS						
MARK NO.	QUANTITY	SIZE	SCH.	DESCRIPTION	SPEC.	GR.
8	1	24"	STD	45° WELD ELL	A-234	WPD
9	1	24"	STD	90° WELD ELL	A-234	WPD
10	1	24"	STD	90° WELD ELL	A-234	WPD
11	1	24"	STD	90° WELD ELL	A-234	WPD
12	1	24"	STD	90° WELD ELL	A-234	WPD
13	1	24"	STD	90° WELD ELL	A-234	WPD
14	1	24"	STD	90° WELD ELL	A-234	WPD
15	1	24"	STD	90° WELD ELL	A-234	WPD
16	1	24"	STD	90° WELD ELL	A-234	WPD
17	1	24"	STD	90° WELD ELL	A-234	WPD
18	1	24"	STD	90° WELD ELL	A-234	WPD
19	1	24"	STD	90° WELD ELL	A-234	WPD
20	1	24"	STD	90° WELD ELL	A-234	WPD
21	1	24"	STD	90° WELD ELL	A-234	WPD
22	1	24"	STD	90° WELD ELL	A-234	WPD



- #### GENERAL NOTES:
- MATERIALS SPECIFICATIONS PER CONTRACT 5-15-82 MATERIAL SPECIFICATIONS CODE TABLES.
 - ALL MATERIALS FABRICATION, INSPECTION, INSTALLATION, CERTIFICATIONS RECORDS AND ALL OTHER REQUIREMENTS CONFORM TO SPECIFICATION 5-15-82 AND ALL APPENDIX AND CONTRACT CHANGES THERE TO.
 - DESIGN CONDITIONS:
PRESS: 15 PSIG
TEMP: 300°F
 - WELDING PROCEDURES & END PREPARATIONS FOR FIELD WELDS - SEE WELDING PROCEDURES & END PREPARATIONS:
PAGE 1, ITEM 1
PAGE 8, ITEM 1
FOR DISSIMILAR WELDS USE PI-98-5
 - HYDROSTATIC TEST:
112 PSIG
 - NON-DESTRUCTIVE TEST REQUIREMENTS:
I VISUAL-100%, ALL WELDS
II MAGNETIC PARTICLE OR LIQUID PENETRANT-100%,
ON ALL FLARE, SOCKET WELDS,
(a) ALL SEAL WELDS,
(b) ALL BRANCH CONNECTIONS 4" & SMALLER,
(c) ALL ATTACHMENT WELDS
III RADIOGRAPHY-100%
(a) ALL BUTT WELDS
(b) ALL BRANCH CONNECTIONS OVER 4"
 - SEISMIC LOCATIONS TO BE SHOWN ON THE AS-BUILT SEISMIC DETAIL SKETCHES.
 - VALVE ORIENTATION CLOCKWISE FROM TOP LOOKING IN SAME DIRECTION OF FLOW, NORTH IS 0° ON VERTICAL PIPE.
 - 1/2" TO 1 1/2" COUPLER PERMITS.
 - 1/2" TO 1 1/2" THE SHIELDING GAS SHALL BE HELIUM.
 - 24" DESIGN TEMP. CLASS II PER N.P.D. 8-2-82.

- #### SPECIAL NOTES:
- COMPLETE FIELD FABRICATION, ALL WELDS TO BE MADE INSIDE THE BLDG.
 - ALL PIPING MATERIALS UN THIS DWD. TO BE AS INDICATED ON REC-755.
 - DRAINING RINGS ARE PERMITTED.
 - CLEANLINESS SHALL CONFORM TO CLASS II CLEANLINESS CONDITION REQUIREMENTS.
 - THE INTERIOR SURFACES OF ALL PIPING IN 1" LARGER SHALL BE PROPERLY PREPARED IN ACCORDANCE WITH PAINT MANUFACTURER'S RECOMMENDATION & GIVEN A PRIME COAT OF CADZIN II AS MANUFACTURED BY THE CARBORONIC COMPANY. INTERIOR SURFACES OF WELDS SHALL BE TOUCHED UP AFTER WELDS HAVE BEEN INSPECTED.
 - ALL WORK SHALL CONFORM TO USAS 3.17 "NUCLEAR POWER PIPING" CLASS II REQUIREMENTS.

PRC APERTURE CARD

INFORMATION ONLY
JUL 16 1982
N.P.D., R.A.D.

DRAWING SUBJECT TO REVISION
PER
 DRAWING BEING REVISED PER
DCH# 82-234

JELCO INCORPORATED

Nebraska Public Power District
COOPER NUCLEAR STATION

SCALE: DATE: FILE NO:
DRAWN BY: APPROVED:
CHECKED BY:
PLAN TITLE:
PV-VENTILATION SYSTEMS PIPING
REACTOR BLDG.
CLASS II N PIPING
SHEET 202-5-301E-1
RCO-755-3
CLASS 15-SE-3

JUNE 23, 1982 N.P.D.

WELDING SYMBOLS		FLANGE SYMBOLS		GATE	SCORE	RELIEF	CHECK	BLT	FLOWMTR	FILTER
WELD	SOCKET WELD	WELD	SOCKET WELD	WELD	SOCKET WELD	WELD	SOCKET WELD	WELD	SOCKET WELD	WELD
WELD	SOCKET WELD	WELD	SOCKET WELD	WELD	SOCKET WELD	WELD	SOCKET WELD	WELD	SOCKET WELD	WELD

454010740
8207290360

RIDS

8207290360

