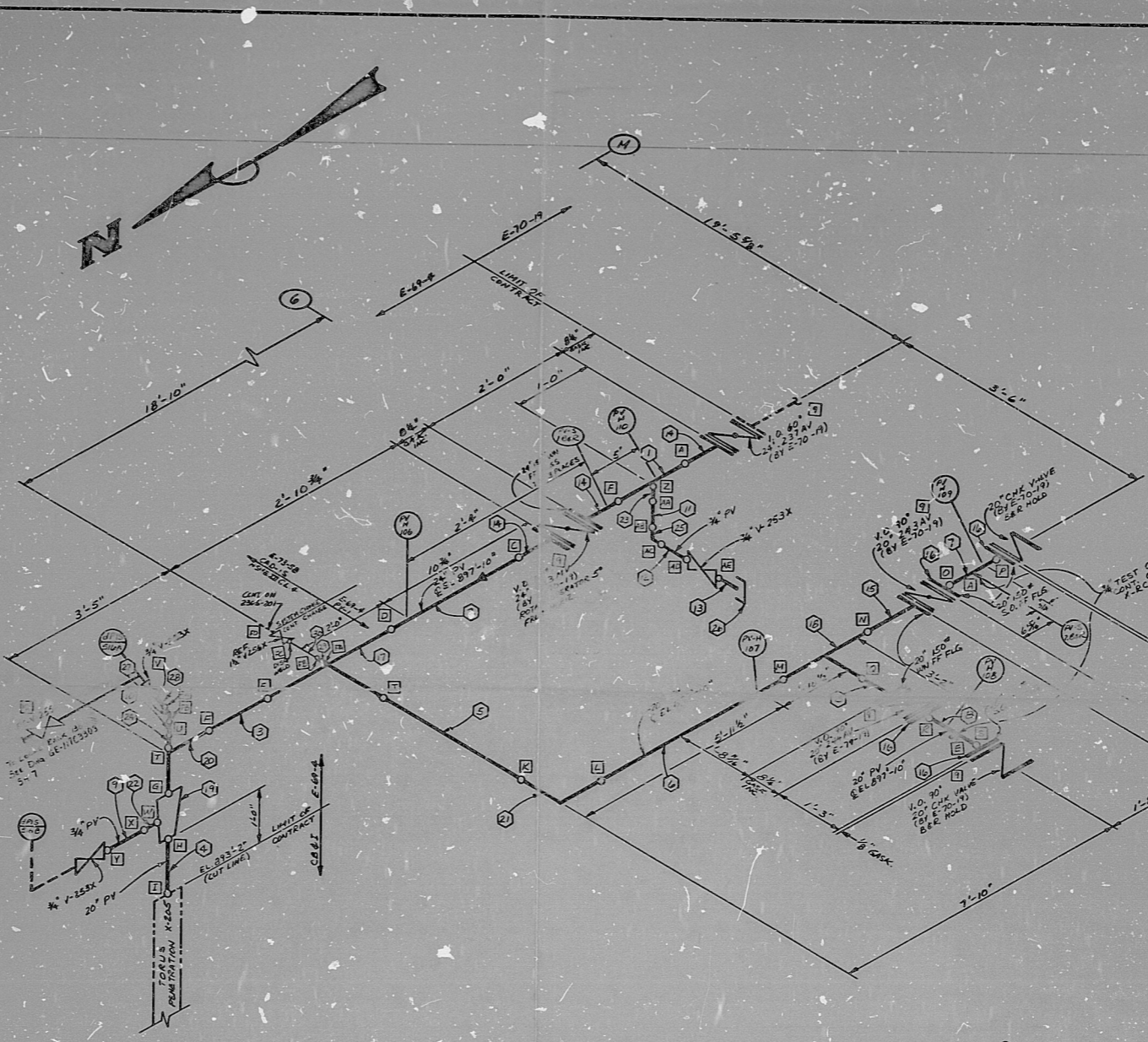


MATERIAL CLASSIFICATION				
CODE	DESCRIPTION	SIZE	CODE	DESCRIPTION
PI-K	PIPE	AS SHOWN	PI-D	PIPE
F-1	FITTINGS	AS SHOWN	F-1	FITTINGS
F-2	FITTINGS	AS SHOWN	F-1	FITTINGS
F-3	FITTINGS	AS SHOWN	F-1	FITTINGS
FL-1	FLANGES	AS SHOWN	FL-1	FLANGES
SO-1	SOCKET WELDS	AS SHOWN	SO-1	SOCKET WELDS
SO-2	SOCKET WELDS	AS SHOWN	SO-2	SOCKET WELDS
SO-3	SOCKET WELDS	AS SHOWN	SO-3	SOCKET WELDS
SO-4	SOCKET WELDS	AS SHOWN	SO-4	SOCKET WELDS
SO-5	SOCKET WELDS	AS SHOWN	SO-5	SOCKET WELDS
SO-6	SOCKET WELDS	AS SHOWN	SO-6	SOCKET WELDS
SO-7	SOCKET WELDS	AS SHOWN	SO-7	SOCKET WELDS
SO-8	SOCKET WELDS	AS SHOWN	SO-8	SOCKET WELDS
SO-9	SOCKET WELDS	AS SHOWN	SO-9	SOCKET WELDS
SO-10	SOCKET WELDS	AS SHOWN	SO-10	SOCKET WELDS
SO-11	SOCKET WELDS	AS SHOWN	SO-11	SOCKET WELDS
SO-12	SOCKET WELDS	AS SHOWN	SO-12	SOCKET WELDS
SO-13	SOCKET WELDS	AS SHOWN	SO-13	SOCKET WELDS
SO-14	SOCKET WELDS	AS SHOWN	SO-14	SOCKET WELDS
SO-15	SOCKET WELDS	AS SHOWN	SO-15	SOCKET WELDS
SO-16	SOCKET WELDS	AS SHOWN	SO-16	SOCKET WELDS
SO-17	SOCKET WELDS	AS SHOWN	SO-17	SOCKET WELDS
SO-18	SOCKET WELDS	AS SHOWN	SO-18	SOCKET WELDS
SO-19	SOCKET WELDS	AS SHOWN	SO-19	SOCKET WELDS
SO-20	SOCKET WELDS	AS SHOWN	SO-20	SOCKET WELDS
SO-21	SOCKET WELDS	AS SHOWN	SO-21	SOCKET WELDS
SO-22	SOCKET WELDS	AS SHOWN	SO-22	SOCKET WELDS
SO-23	SOCKET WELDS	AS SHOWN	SO-23	SOCKET WELDS
SO-24	SOCKET WELDS	AS SHOWN	SO-24	SOCKET WELDS
SO-25	SOCKET WELDS	AS SHOWN	SO-25	SOCKET WELDS
SO-26	SOCKET WELDS	AS SHOWN	SO-26	SOCKET WELDS
SO-27	SOCKET WELDS	AS SHOWN	SO-27	SOCKET WELDS
SO-28	SOCKET WELDS	AS SHOWN	SO-28	SOCKET WELDS
SO-29	SOCKET WELDS	AS SHOWN	SO-29	SOCKET WELDS
SO-30	SOCKET WELDS	AS SHOWN	SO-30	SOCKET WELDS
SO-31	SOCKET WELDS	AS SHOWN	SO-31	SOCKET WELDS
SO-32	SOCKET WELDS	AS SHOWN	SO-32	SOCKET WELDS
SO-33	SOCKET WELDS	AS SHOWN	SO-33	SOCKET WELDS
SO-34	SOCKET WELDS	AS SHOWN	SO-34	SOCKET WELDS
SO-35	SOCKET WELDS	AS SHOWN	SO-35	SOCKET WELDS
SO-36	SOCKET WELDS	AS SHOWN	SO-36	SOCKET WELDS
SO-37	SOCKET WELDS	AS SHOWN	SO-37	SOCKET WELDS
SO-38	SOCKET WELDS	AS SHOWN	SO-38	SOCKET WELDS
SO-39	SOCKET WELDS	AS SHOWN	SO-39	SOCKET WELDS
SO-40	SOCKET WELDS	AS SHOWN	SO-40	SOCKET WELDS

MATERIAL CLASSIFICATION	WELD TYPE	WELD SIZE	WELD CODE	WELD DESCRIPTION	WELD USE	FIELD USE
CO-1	CO-1	AS SHOWN	CO-1	CO-1	CO-1	CO-1
CO-2	CO-2	AS SHOWN	CO-2	CO-2	CO-2	CO-2
CO-3	CO-3	AS SHOWN	CO-3	CO-3	CO-3	CO-3
CO-4	CO-4	AS SHOWN	CO-4	CO-4	CO-4	CO-4
CO-5	CO-5	AS SHOWN	CO-5	CO-5	CO-5	CO-5
CO-6	CO-6	AS SHOWN	CO-6	CO-6	CO-6	CO-6
CO-7	CO-7	AS SHOWN	CO-7	CO-7	CO-7	CO-7
CO-8	CO-8	AS SHOWN	CO-8	CO-8	CO-8	CO-8
CO-9	CO-9	AS SHOWN	CO-9	CO-9	CO-9	CO-9
CO-10	CO-10	AS SHOWN	CO-10	CO-10	CO-10	CO-10
CO-11	CO-11	AS SHOWN	CO-11	CO-11	CO-11	CO-11
CO-12	CO-12	AS SHOWN	CO-12	CO-12	CO-12	CO-12
CO-13	CO-13	AS SHOWN	CO-13	CO-13	CO-13	CO-13
CO-14	CO-14	AS SHOWN	CO-14	CO-14	CO-14	CO-14
CO-15	CO-15	AS SHOWN	CO-15	CO-15	CO-15	CO-15
CO-16	CO-16	AS SHOWN	CO-16	CO-16	CO-16	CO-16
CO-17	CO-17	AS SHOWN	CO-17	CO-17	CO-17	CO-17
CO-18	CO-18	AS SHOWN	CO-18	CO-18	CO-18	CO-18
CO-19	CO-19	AS SHOWN	CO-19	CO-19	CO-19	CO-19
CO-20	CO-20	AS SHOWN	CO-20	CO-20	CO-20	CO-20
CO-21	CO-21	AS SHOWN	CO-21	CO-21	CO-21	CO-21
CO-22	CO-22	AS SHOWN	CO-22	CO-22	CO-22	CO-22
CO-23	CO-23	AS SHOWN	CO-23	CO-23	CO-23	CO-23
CO-24	CO-24	AS SHOWN	CO-24	CO-24	CO-24	CO-24
CO-25	CO-25	AS SHOWN	CO-25	CO-25	CO-25	CO-25
CO-26	CO-26	AS SHOWN	CO-26	CO-26	CO-26	CO-26
CO-27	CO-27	AS SHOWN	CO-27	CO-27	CO-27	CO-27
CO-28	CO-28	AS SHOWN	CO-28	CO-28	CO-28	CO-28
CO-29	CO-29	AS SHOWN	CO-29	CO-29	CO-29	CO-29
CO-30	CO-30	AS SHOWN	CO-30	CO-30	CO-30	CO-30

MARK NO.	QTY	SIZE	SCH.	SECT.	GR.	TYPE	CUT	END	MATERIAL	SOCKET
1	1	24"	STD	A-106	B	SMLS	FE	FE	A-106	
2	1	24"	STD	A-106	B	SMLS	FE	FE	A-106	
3	1	24"	STD	A-106	B	SMLS	FE	FE	A-106	
4	1	24"	STD	A-106	B	SMLS	FE	FE	A-106	
5	1	24"	STD	A-106	B	SMLS	FE	FE	A-106	
6	1	24"	STD	A-106	B	SMLS	FE	FE	A-106	
7	1	24"	STD	A-106	B	SMLS	FE	FE	A-106	
8	1	24"	STD	A-106	B	SMLS	FE	FE	A-106	
9	1	24"	STD	A-106	B	SMLS	FE	FE	A-106	
10	1	24"	STD	A-106	B	SMLS	FE	FE	A-106	
11	1	24"	STD	A-106	B	SMLS	FE	FE	A-106	
12	1	24"	STD	A-106	B	SMLS	FE	FE	A-106	
13	1	24"	STD	A-106	B	SMLS	FE	FE	A-106	
14	1	24"	STD	A-106	B	SMLS	FE	FE	A-106	
15	1	24"	STD	A-106	B	SMLS	FE	FE	A-106	
16	1	24"	STD	A-106	B	SMLS	FE	FE	A-106	
17	1	24"	STD	A-106	B	SMLS	FE	FE	A-106	
18	1	24"	STD	A-106	B	SMLS	FE	FE	A-106	
19	1	24"	STD	A-106	B	SMLS	FE	FE	A-106	
20	1	24"	STD	A-106	B	SMLS	FE	FE	A-106	
21	1	24"	STD	A-106	B	SMLS	FE	FE	A-106	
22	1	24"	STD	A-106	B	SMLS	FE	FE	A-106	
23	1	24"	STD	A-106	B	SMLS	FE	FE	A-106	
24	1	24"	STD	A-106	B	SMLS	FE	FE	A-106	
25	1	24"	STD	A-106	B	SMLS	FE	FE	A-106	
26	1	24"	STD	A-106	B	SMLS	FE	FE	A-106	
27	1	24"	STD	A-106	B	SMLS	FE	FE	A-106	
28	1	24"	STD	A-106	B	SMLS	FE	FE	A-106	
29	1	24"	STD	A-106	B	SMLS	FE	FE	A-106	
30	1	24"	STD	A-106	B	SMLS	FE	FE	A-106	

MARK NO.	QTY	SIZE	SCH.	SECT.	GR.	TYPE	CUT	END	MATERIAL	SOCKET
31	1	24"	STD	A-106	B	SMLS	FE	FE	A-106	



GENERAL NOTES:

- MATERIAL SPECIFICATIONS PER CONTRACT & PIPING MATERIAL SPECIFICATION CODE TABLES.
- ALL MATERIALS FABRICATION, INSPECTION, INSTALLATION, CERTIFICATION, RECORDS AND ALL OTHER REQUIREMENTS CONFORM TO SPECIFICATION E-3874 AND ALL ADDENDA AND CONTRACT CHANGES THERE TO.
- DESIGN CONDITIONS: PRESS. = 25 PSIG, TEMP. = 100° F.
- WELDING PROCEDURES & END PREPARATIONS FOR FIELD WELDS SEE WELDING PROCEDURES & END PREPARATIONS PAGE - 1, ITEM 1, PAGE 8, ITEM 1.
- HYDROSTATIC TEST: 1 1/2 PSIG.
- NON-DESTRUCTIVE TEST REQUIREMENTS:
 - WELD - 100% ALL WELDS.
 - MAGNETIC PARTICLE OR LIQUID PENETRANT - 100%.
 - ALL FITT WELDS & SOCKET WELDS.
 - ALL SEAL WELDS.
 - ALL BRANCH CONNECTIONS 4\"/>
 - ALL ATTACHMENT WELDS.
 - ALL SLOTT / ELDS.
 - ALL BRANCH CONNECTIONS OVER 4\"/>
- HANGER LOCATIONS TO BE SHOWN ON AS BUILT HANGER DETAIL SKETCHES.
- SEISMIC LOCATIONS TO BE SHOWN ON THE AS BUILT SEISMIC DETAIL SKETCHES.
- VALVE ORIENTATION COUNTERCLOCKWISE FROM THE FLOW IN SAME DIRECTION OF FLOW, NORTH IS 0° MECHANICAL PIP. 10\"/>

PRC APERTURE CARD

INFORMATION ONLY
JUL 16 1982
N.P.P.D., R.A.D.

454014436

Nabors PO Box 411 District COOPER NUCLEAR STATION	JELCO INCORPORATED
SCALE: FEET	DATE:
DRAWN BY:	FILE NO.:
CHECKED:	APPROVED:
PLAN TITLE	
PV VENTILATION SYSTEMS DRAIN REACTOR BLDG	
CLASS II IN PIPING	
REVISED:	DATE:
DESIGNER:	DATE:
PROJECT NO.:	NO.:
CLASS IS:	CLASS IS:

8207290349

JUNE 23, 1982 N.P.P.D.

RIDS

8207290349

