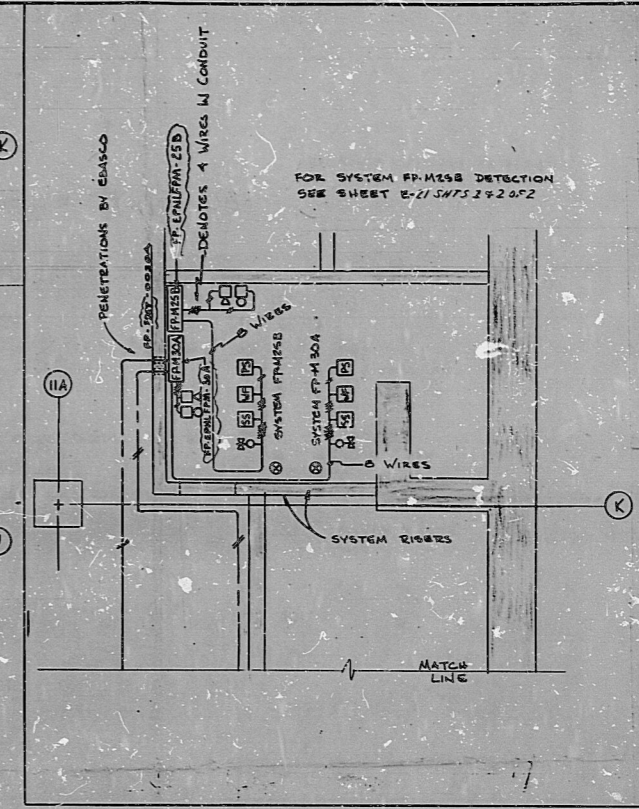


SYSTEM FP-M30A COVERAGE LIMIT

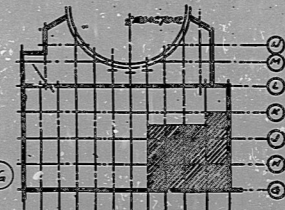
DENOTES ELEV. CHANGE (MP)

FP-E-DEF-0030A
LINE TYPE 225° THERMISTOR SET FOR 30.0° ELEV. + 34.0° (TYP)



- GENERAL NOTES FOR WIREMAN'S ELECTRICAL CONTRACTOR
- WIREMAN'S ELECTRICAL CONTRACTOR SHALL INSTALL ALL INTERCONNECTING CABLES AND CONDUIT IN EACH ZONE. CABLES AND CONDUIT INSTALLATIONS BETWEEN ZONE AND THE HARDWARE CONTROL PANEL (BY OTHERS) WILL BE OF OTHERS AND SUPERVISED BY OTHERS.
 - WIRING SHALL BE WITH HEAT, RUST-RESISTANT AND FLAME RESISTANT INSULATION AND, IF THE INSULATION ALONG IS NOT FLAME (FIRE) RESISTANT, OUTER COVERING SHALL BE USED (SIMILAR TO 312, 314, 316). INSULATION SUCH AS POLYETHYLENE, CHLORIDE AND INSULITE SHALL NOT BE USED.
 - WIRING SHALL BE TERMINATED ON TERMINAL BOARDS OR EQUIPMENT USING COMPRESSION TYPE OR NO TORQUE CONNECTORS USING INSULATION GRIP SLEEVES. CONNECTORS SHALL BE ALUMINUM OR BRASS PRODUCTS WITH INSULATED BANDING GRIP OR TRIMS AND SETS SELF-INSULATED STRIPS WITH INSULATION GRIP. 6/16 TYPE SPARK TERMINALS, BOX CLAMP OR SADDLE CLAMP TERMINALS ARE NOT ACCEPTABLE.
 - NO SOLDER OR "PUSH-ON" OR "QUICK" TYPE CONNECTORS SHALL BE USED IN CONNECTION WITH ANY WIRING, EXCEPT SOLDER TYPE WILL BE ACCEPTABLE FOR INDICATING LIGHTS AND RESISTORS, IF REQUIRED.
 - PROVISIONS SHALL BE MADE FOR CONVENIENTLY ESTABLISHING THE CONTINUITY OF ALL CONTROL CIRCUITS. OVER FUSES OR BOTH ENDS OF A WIRE WITH RESISTORS SHALL BE FURNISHED TO FACILITATE IDENTIFICATION.
 - POWER SUPPLY WILL BE SUPPLIED BY OTHERS FROM PURCHASER'S 125 VDC UNGROUNDING 2 WIRE SOURCE. THE SHORT CIRCUIT CAPABILITY IS 20,000 AMPERES AT THE CONTROL PANEL.
** 125 VDC NOMINAL, 105 VDC MINIMUM AND 140 VDC MAXIMUM.
 - CONDUIT RIGGING ARE SHOWN DIAGONALLY. EXACT LOCATION OF ALL EQUIPMENT TO BE DETERMINED IN THE FIELD.

- LEGEND
- WATER FLOW PRESSURE SWITCH
 - LOW AIR PRESSURE SWITCH
 - VALVE SUPERVISORY SWITCH
 - SOLENOID VALVE
 - TROUBLE HORN
 - ALARM BELL
 - JUNCTION BOX



REFERENCE DRAWINGS
 FP-0 COVER SHEET
 FP-41 FP-M30A PIPING
 FP-40 VALVE STATION PIPING
 E21-SWTS-2 FP-M30B DETECTION
 E22-SWTS-118AUB-ABRR-11317 PANEL DWG.

SI APERTURE BAND

9401120142

LIST NO.	PAINT MARK	LINE	NO. REQ.
MAINS			
P.S.			

TYPE OF OCCUPANCY & NAME OF OCCUPANT	TYPE OF FINISH	1ST	2ND	3RD	4TH	5TH	6TH	7TH	8TH	9TH	10TH	11TH	12TH
REACTOR AUX. BLDG. EL. + 21-0													
MULTI-CYCLE SYSTEM FP-M30A													

NO.	DATE	REVISION DESCRIPTION	BY	CHK	APP
1	1-6-87	REVISED FOR FIELD	WJH		
2	1-14-87	REVISED FOR FIELD	WJH		

DISCIPLINE COMMENTS DUE BY 5-6

DISCIPLINE	FOR	BY	DATE
Mechanical			
Civil/Struct			
Electrical			
Plumbing			
Contractors			
Other			

5817-6338 R3

LOUISIANA POWER & LIGHT COMPANY
 WATERFORD 5 E.S. UNIT NO. 2
 1981 - 1982 INSTALLATION

DATE: 1/14/87

LOUISIANA POWER & LIGHT COMPANY
 WATERFORD 5 E.S. UNIT NO. 2
 ST. CHARLES PARISH, LOUISIANA

PDR RIDS

9401120142 —

