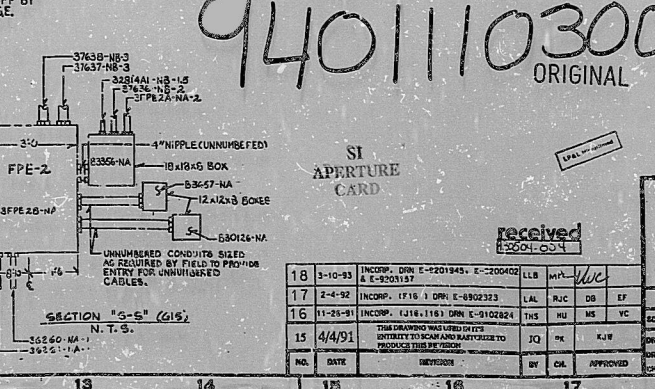
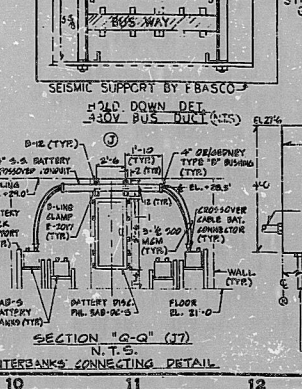
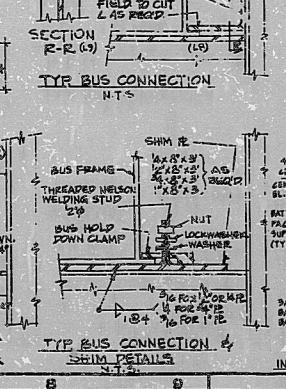
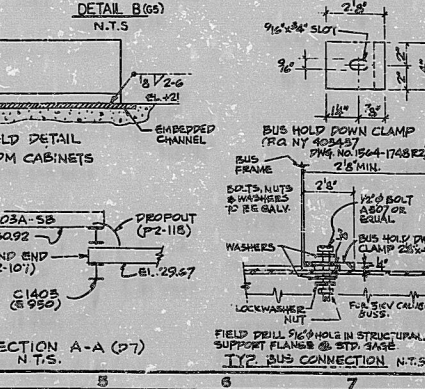
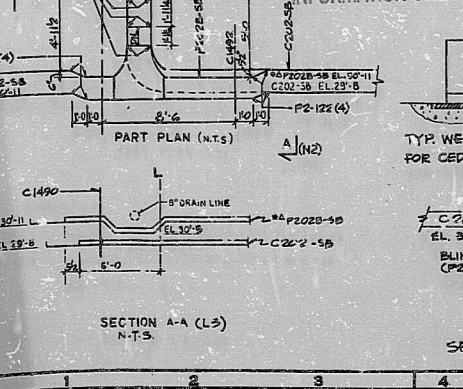
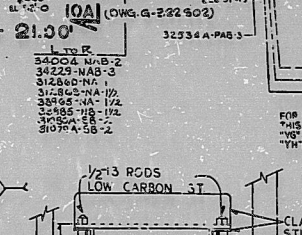
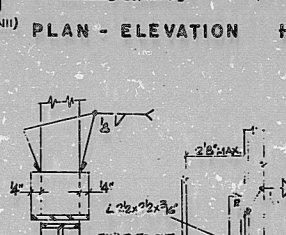
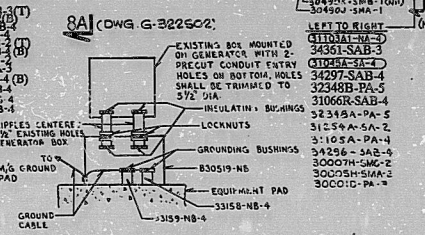
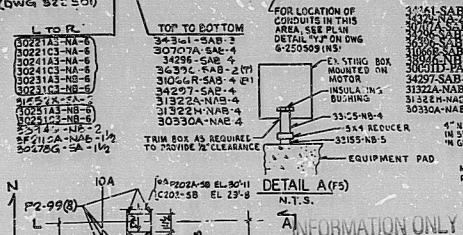


SYMBOLS
 --- EXPOSED CONDUITS
 - - - - EMBEDDED CONDUITS

- NOTES**
- FOR NOTES AND SYMBOLS SEE 4-235
 - FOR REFERENCE DRAWING SEE 4-235-20
 - ALL PULL BOXES ON THIS DRAWING WILL BE OBTAINED FROM SPECIFICATION ON DWG G-319-02 UNLESS OTHERWISE NOTED
 - FOR LOCATION OF CONDUITS AND TRAYS REFER TO CONDUIT AND TRAY LAYOUTS ON EQUIPMENT SEE DWG G-344-01, 02 & 03
 - FOR CONDUIT NOT SHOWN ON DWG. SEE DWG G-344-01, 02 & 03
 - FOR OVERHEAD SUPPORT DWG. SEE 4-377-114
 - FOR BATTERY CABINET USE P25-01 (WITH BATT.) INTERNAL 2" W/2" ANGLE BRACKET FOR TRAY IN CELL CONNECTION BETWEEN RACKS. CABLES UTILIZED INTER-RACK CONNECTIONS SHALL BE MADE USING 202-202-202-202-202-202-202-202 INTER-RACK CONNECTORS SHALL BE BENT IN A "Z" SHAPED FORM WITH SUPPORTING BUSHINGS SUPPORTED BY 1/2" X 1/2" X 1/2" ANGLE BRACKET. THESE SHALL NOT EXCEED 25' IN LENGTH. INTER-RACK CONNECTIONS SHALL BE MADE BETWEEN ADJACENT RACKS WITH SUPPORTING BUSHINGS WITH A MAXIMUM CONDUIT LENGTH OF 25'
 - FOR TRAY GROUNDING DETAILS SEE 4-377-114
 - 2" X 2" X 1/2" ANGLE BRACKET SHALL BE INSTALLED OVER RACK WITH 1/2" X 1/2" X 1/2" ANGLE BRACKET INTER-RACK AND INTER-RACK CONNECTIONS SHALL BE MADE USING 202-202-202-202-202-202-202-202 INTER-RACK CONNECTORS SHALL BE BENT IN A "Z" SHAPED FORM WITH SUPPORTING BUSHINGS SUPPORTED BY 1/2" X 1/2" X 1/2" ANGLE BRACKET. THESE SHALL NOT EXCEED 25' IN LENGTH. INTER-RACK CONNECTIONS SHALL BE MADE BETWEEN ADJACENT RACKS WITH SUPPORTING BUSHINGS WITH A MAXIMUM CONDUIT LENGTH OF 25'

9401110300

ORIGINAL



APERTURE CARD
 received
 1977-11-17

THIS DOCUMENT IS THE PROPERTY OF ERASCO SERVICES INCORPORATED. IT IS LOANED TO YOU BY THE COMPANY AND IS NOT TO BE REPRODUCED, COPIED, OR USED IN WHOLE OR IN PART WITHOUT THE WRITTEN PERMISSION OF ERASCO SERVICES INCORPORATED.

18	1-10-83	INCOP. DRN C-201949-E-200402	LLB	W	W
17	1-10-83	INCOP. DRN C-201949-E-200402	LLB	W	W
16	11-21-81	INCOP. DRN C-201949-E-200402	LLB	W	W
15	4/4/81	INCOP. DRN C-201949-E-200402	LLB	W	W
NO.	DATE	DESCRIPTION	BY	CA	APPROVED

ERASCO SERVICES INCORPORATED
 1977-11-17-77
 LOU 1664
 G-321-S01

LOUISIANA POWER & LIGHT COMPANY
 WATERFORD S.E.S. UNIT NO. 3
 1977-11-08 NW INSTALLATION
 ELECTRICAL EQUIPMENT ROOM
 CONDUIT & TRAYS-SH.1

PDR RIDR

940110300 —

