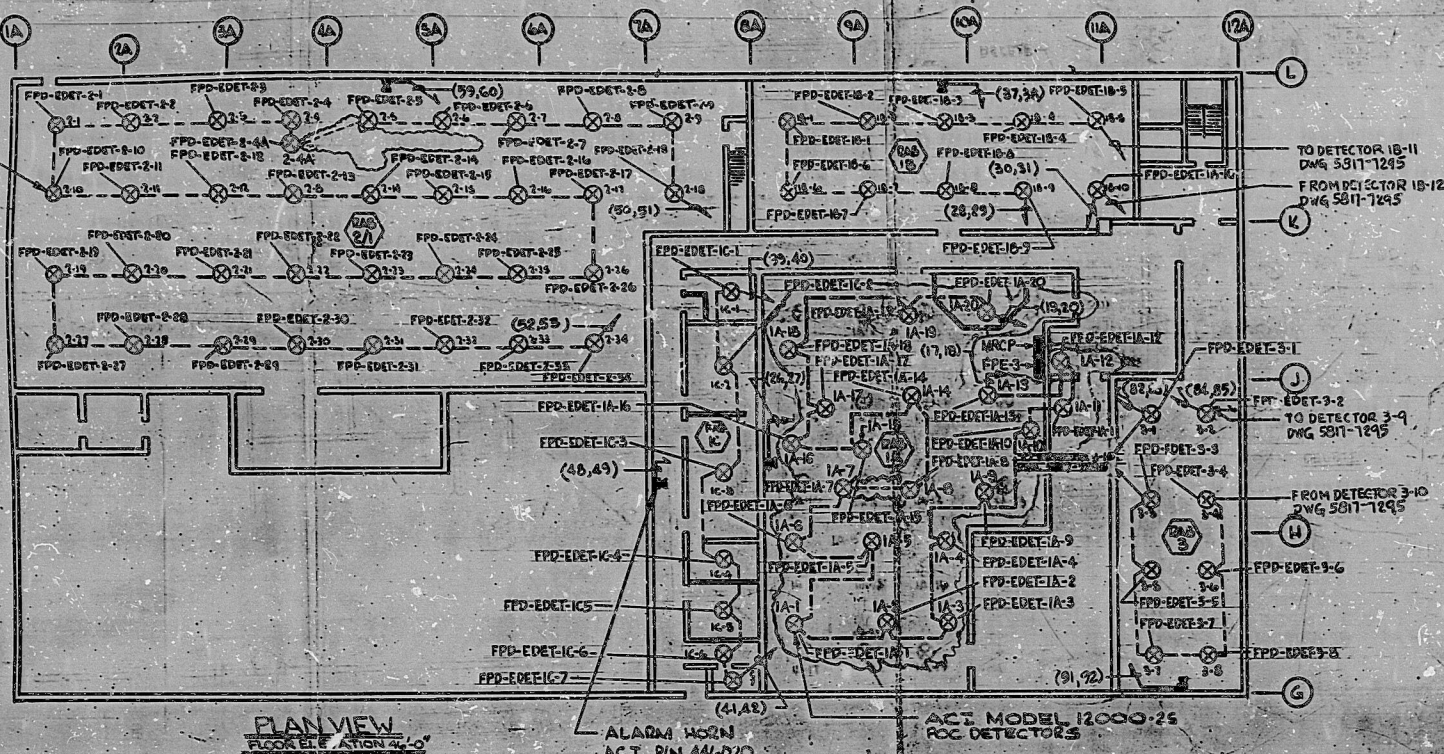


ACI MODEL 12000-25
POC DETECTORS

| HALLWAY AREA | DETECTOR | HOORN |
|--------------|----------|-------|
| QAB 1A | 20 | 1 |
| QAB 1B | 10 | 1 |
| QAB 1C | 7 | 1 |
| QAB 2 | 38 | 1 |
| QAB 3 | 8 | 1 |
| TOTAL | 5 | 1 |

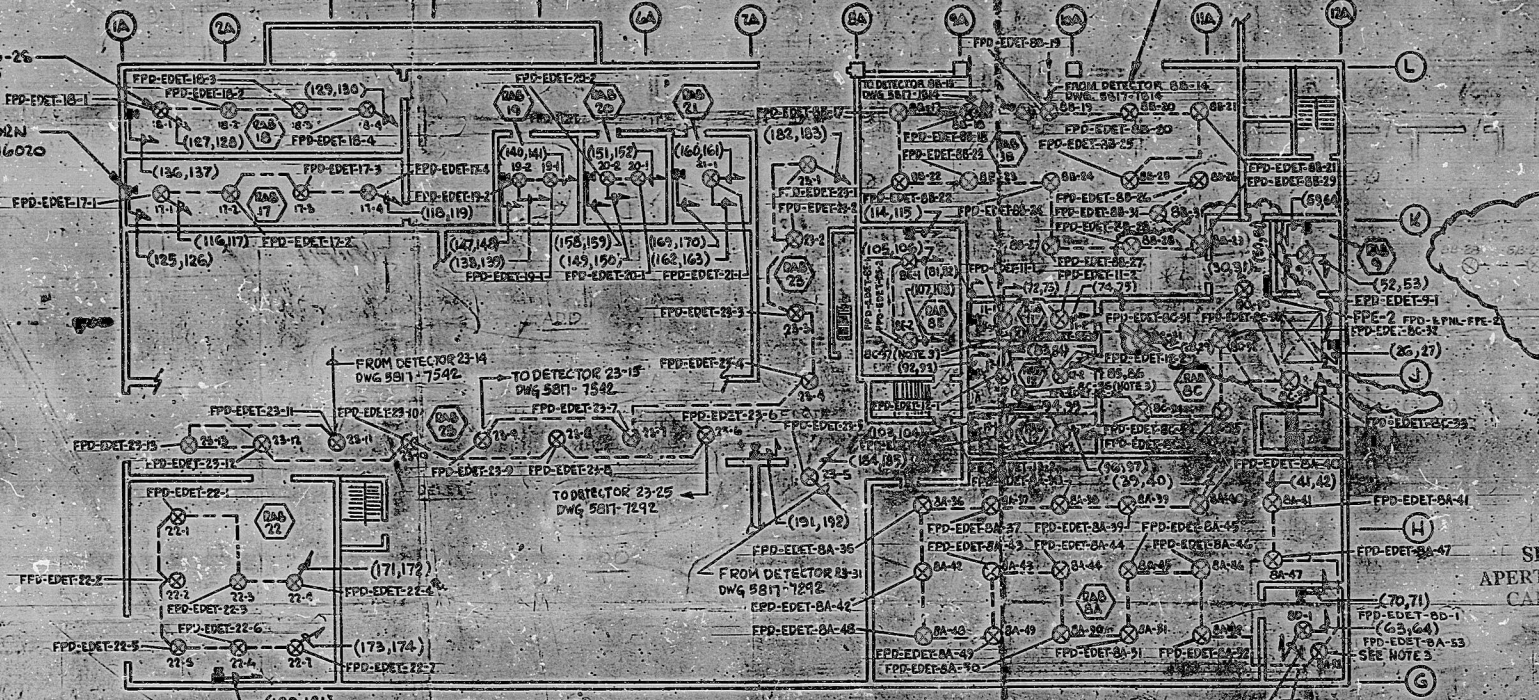


PLAN VIEW
FLOOR ELEVATION 46'-0"

ACI MODEL 12000-25
POC DETECTORS

ACI MODEL 12000-25
POC DETECTORS

| HALLWAY AREA | DETECTOR | HOORN |
|--------------|----------|-------|
| QAB 8A | 18 | 1 |
| QAB 9 | 1 | 1 |
| QAB 8D | 1 | 1 |
| QAB 11 | 2 | 1 |
| QAB 12 | 2 | 1 |
| QAB 13 | 2 | 1 |
| QAB 8E | 2 | 1 |
| QAB 17 | 4 | 1 |
| QAB 18 | 4 | 1 |
| QAB 19 | 2 | 1 |
| QAB 20 | 2 | 1 |
| QAB 21 | 1 | 1 |
| QAB 22 | 7 | 1 |
| QAB 23 | 13 | 1 |
| QAB 8B | 15 | 1 |
| QAB 8C | 7 | 1 |

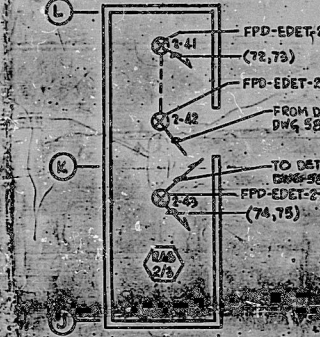


PLAN VIEW
FLOOR ELEVATION 21'-0"

NOTES (CONT)
5. ACI/PN 12000-35 (NITTAN MID-50) DETECTOR IS INTER-CHANGEABLE WITH ALL ACI/PN 12000-2 SERIES.

| NO. | DATE | REVISION | DESCRIPTION | BY | APP. |
|-----|----------|----------|----------------------------|-----------|------|
| 1 | 12-11-73 | 1 | ISSUED FOR CONSTRUCTION | W. J. ... | ... |
| 2 | 1-11-74 | 1 | REVISION TO DETECTOR 18-12 | ... | ... |
| 3 | 2-11-74 | 1 | REVISION TO DETECTOR 18-12 | ... | ... |
| 4 | 3-11-74 | 1 | REVISION TO DETECTOR 18-12 | ... | ... |
| 5 | 4-11-74 | 1 | REVISION TO DETECTOR 18-12 | ... | ... |

NOTES:
1- ALL HOME RUNS TO BE ROUTED TO PANEL FPD-2 EXCEPT AS NOTED. (26,27) INDICATES FPD-2 TERMINAL POINTS FOR EL 21'-0". ALL OTHERS WILL RUN TO FPD-3 AT EL 46'-0" AND ABOVE.
2- FOR ADDITIONAL NOTES SEE EBASCO DWG# 5817-1811
3- DETECTORS 8A-33, 8C-36 AND 8C-37 ARE LOCATED ABOVE COMPUTER AND SAFETY BATTERY ROOMS, RESPECTIVELY.
4- SEE DETECTOR 3-10 HANGING ABOVE HANGAR AREA WAB 8A (NOTES CONT ABOVE.)



PLAN VIEW
FOR INFORMATION ONLY

- ACI/PN 12000-25 SURFACE MOUNTED POC DETECTOR
- ACI/PN 12000-37 FLUSH MOUNTED POC DETECTOR
- ACI/PN 3000-46 RADIATION RESISTANT SURFACE MOUNTED POC DETECTOR
- ACI/PN 448022 OR PN 449063 SILENCER AND PROTECTOR

| CUSTOMER REFERENCE | | DETECTION LAYOUT | |
|---------------------------------|----------------|----------------------------|-------------|
| EBASCO SERVICES (WATERFORD III) | SEE UNIT #3 | 541064 | SHT. 2 OF 9 |
| SYSTEM # 808-M77 | ACI JOB # 8178 | REACTOR AUXILIARY BUILDING | |

| TOLERANCES EXCEPT AS NOTED | DECIMAL | ANGULAR | APPX. | SCALE |
|----------------------------|---------|---------|-------|---------------|
| ±.005 | ±.005 | ±.005 | ±.005 | 1/16" = 1'-0" |

| DISCIPLINE | REVISION |
|------------------|----------|
| MECHANICAL | |
| ELECTRICAL | |
| CIVIL | |
| PLUMBING | |
| HEATING | |
| AIR CONDITIONING | |
| PAINTING | |
| CONCRETE | |
| STEEL | |
| WOODWORK | |
| GLASS | |
| INSULATION | |
| ROOFING | |
| FOUNDATION | |
| STRUCTURE | |
| MECHANICAL | |
| ELECTRICAL | |
| CIVIL | |
| PLUMBING | |
| HEATING | |
| AIR CONDITIONING | |
| PAINTING | |
| CONCRETE | |
| STEEL | |
| WOODWORK | |
| GLASS | |
| INSULATION | |
| ROOFING | |
| FOUNDATION | |
| STRUCTURE | |

| NO. | DATE | REVISION | DESCRIPTION |
|-----|----------|----------|----------------------------|
| 1 | 12-11-73 | 1 | ISSUED FOR CONSTRUCTION |
| 2 | 1-11-74 | 1 | REVISION TO DETECTOR 18-12 |
| 3 | 2-11-74 | 1 | REVISION TO DETECTOR 18-12 |
| 4 | 3-11-74 | 1 | REVISION TO DETECTOR 18-12 |
| 5 | 4-11-74 | 1 | REVISION TO DETECTOR 18-12 |

9401110276

X9401050067

PDR RIDE

9401110276 —

