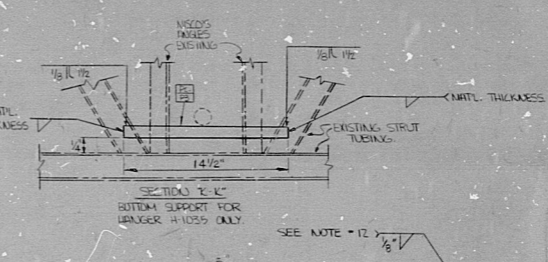
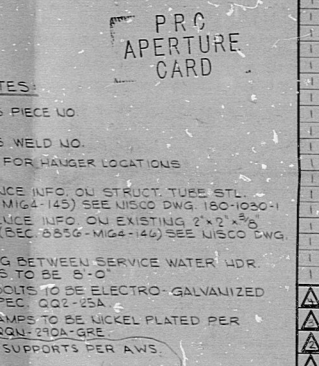
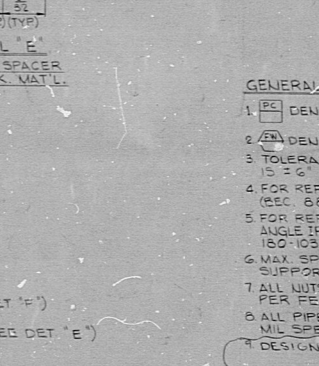
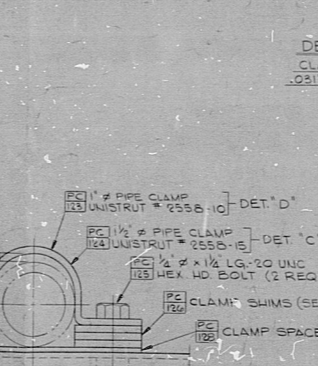
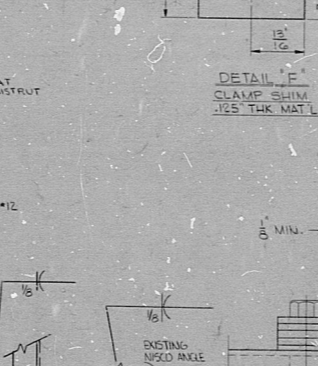
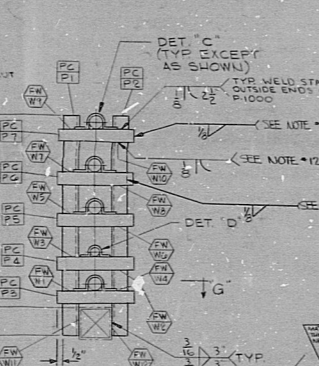
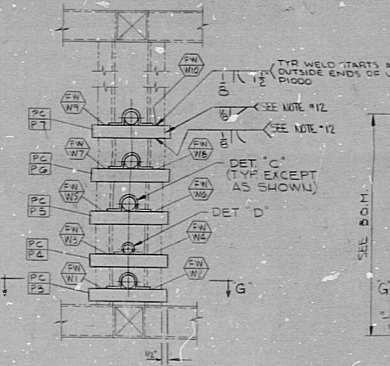


TABLE 1

HANGER NO.	SECTION	P1	P2	P3	P4	P5	P6	P7
H1001	B-B	1	2	23	24	25	26	27
H1002	A-A	1	2	23	24	25	26	27
H1003	B-B	3	4	33	34	35	36	37
H1004	A-A	1	2	33	34	35	36	37
H1005	B-B	5	6	43	44	45	46	47
H1006	A-A	1	2	43	44	45	46	47
H1007	B-B	7	8	53	54	55	56	57
H1008	B-B	9	10	53	54	55	56	57
H1009	A-A-HH	1	2	63	64	65	66	67
H1010	B-B	11	12	63	64	65	66	67
H1011	A-A	1	2	73	74	75	76	77
H1012	B-B	13	14	73	74	75	76	77
H1013	A-A	1	2	83	84	85	86	87
H1014	B-B	15	16	83	84	85	86	87
H1015	A-A-KK	1	2	93	94	95	96	97
H1016	B-B	17	18	93	94	95	96	97
H1017	A-A	1	2	103	104	105	106	107
H1018	B-B	19	20	103	104	105	106	107
H1019	A-A	1	2	113	114	115	116	117
H1020	B-B	21	22	113	114	115	116	117

TABLE 2

HANGER NO.	SECTION	W1	W2	W3	W4	W5	W6	W7	W8	W9	W10	W11	W12
H1001	B-B	1	2	3	4	5	6	7	8	9	10	11	12
H1002	A-A	13	14	15	16	17	18	19	20	21	22	23	24
H1003	B-B	25	26	27	28	29	30	31	32	33	34	35	36
H1004	A-A	37	38	39	40	41	42	43	44	45	46	47	48
H1005	B-B	49	50	51	52	53	54	55	56	57	58	59	60
H1006	A-A	61	62	63	64	65	66	67	68	69	70	71	72
H1007	B-B	73	74	75	76	77	78	79	80	81	82	83	84
H1008	B-B	85	86	87	88	89	90	91	92	93	94	95	96
H1009	A-A-HH	97	98	99	100	101	102	103	104	105	106	107	108
H1010	B-B	109	110	111	112	113	114	115	116	117	118	119	120
H1011	A-A	121	122	123	124	125	126	127	128	129	130	131	132
H1012	B-B	133	134	135	136	137	138	139	140	141	142	143	144
H1013	A-A	145	146	147	148	149	150	151	152	153	154	155	156
H1014	B-B	157	158	159	160	161	162	163	164	165	166	167	168
H1015	A-A-KK	169	170	171	172	173	174	175	176	177	178	179	180
H1016	B-B	181	182	183	184	185	186	187	188	189	190	191	192
H1017	A-A	193	194	195	196	197	198	199	200	201	202	203	204
H1018	B-B	205	206	207	208	209	210	211	212	213	214	215	216
H1019	A-A	217	218	219	220	221	222	223	224	225	226	227	228
H1020	B-B	229	230	231	232	233	234	235	236	237	238	239	240



WELDS: 222
START UP 1-55A

REV Δ NOTE
INCRP REDLINE Δ Δ
Δ ADDED SECTION H-H
REVISED NOTE #12
MODIFIED SECTIONS A-A, B-B, G-G
TO COMPLY WITH NOTE #12
REVISED TABLE #1
Δ HIDDEN SECTION K-K
REVISED TABLE #1-2,
MODIFIED PLANS HEREIN
REVISED DIMS TO REFLECT
FIELD CONDITIONS
DIMENSIONED LENGTH OF R-R
IN SECTION B-B TO SUIT
FIELD INSTALLATION
ALSO CORRECTED WELD
SYMBOLS IN SECT H-H & B-B

REV Δ NOTES:
REVISED LENGTHS OF ΔΔ - UNISTRUT
ADDED HANGER DIMENSIONS PER
REQUIRMENT CONSTRUCTION
ADDED NOTE #15

QTY	DESCRIPTION	WELD	GR	PC	NO	QTY	DESCRIPTION	WELD	GR	PC	NO
1	1" LWS - P-1000 UNISTRUT	2-510	C	106		1	1" LWS - P-1000 UNISTRUT	2-510	C	106	
1	"			107		1	"			107	
1	"			108		1	"			108	
1	"			109		1	"			109	
1	"			110		1	"			110	
1	"			111		1	"			111	
1	"			112		1	"			112	
1	"			113		1	"			113	
1	"			114		1	"			114	
1	"			115		1	"			115	
1	"			116		1	"			116	
1	"			117		1	"			117	
1	"			118		1	"			118	
1	"			119		1	"			119	
1	"			120		1	"			120	
1	"			121		1	"			121	
1	"			122		1	"			122	
1	1/2" PIPE CLAMP UNISTRUT P-2556-10			123		1	1/2" PIPE CLAMP UNISTRUT P-2556-10			123	
20	"			124		20	"			124	
200	1/2" x 1/2" LG 20 UNC HEX HD BOLT A-307-14			125		200	1/2" x 1/2" LG 20 UNC HEX HD BOLT A-307-14			125	
150	CLAMP SPACER (W/2" DIA)			126		150	CLAMP SPACER (W/2" DIA)			126	
150	CLAMP SPACER (W/1" DIA)			127		150	CLAMP SPACER (W/1" DIA)			127	
60	CLAMP SHIM (SEE DET. E)			128		60	CLAMP SHIM (SEE DET. E)			128	

SIZE B

QTY	DESCRIPTION	WELD	GR	PC	NO	QTY	DESCRIPTION	WELD	GR	PC	NO
1	1" LWS - P-1000 UNISTRUT	2-510	C	106		1	1" LWS - P-1000 UNISTRUT	2-510	C	106	
1	"			107		1	"			107	
1	"			108		1	"			108	
1	"			109		1	"			109	
1	"			110		1	"			110	
1	"			111		1	"			111	
1	"			112		1	"			112	
1	"			113		1	"			113	
1	"			114		1	"			114	
1	"			115		1	"			115	
1	"			116		1	"			116	
1	"			117		1	"			117	
1	"			118		1	"			118	
1	"			119		1	"			119	
1	"			120		1	"			120	
1	"			121		1	"			121	
1	"			122		1	"			122	
1	1/2" PIPE CLAMP UNISTRUT P-2556-10			123		1	1/2" PIPE CLAMP UNISTRUT P-2556-10			123	
20	"			124		20	"			124	
200	1/2" x 1/2" LG 20 UNC HEX HD BOLT A-307-14			125		200	1/2" x 1/2" LG 20 UNC HEX HD BOLT A-307-14			125	
150	CLAMP SPACER (W/2" DIA)			126		150	CLAMP SPACER (W/2" DIA)			126	
150	CLAMP SPACER (W/1" DIA)			127		150	CLAMP SPACER (W/1" DIA)			127	
60	CLAMP SHIM (SEE DET. E)			128		60	CLAMP SHIM (SEE DET. E)			128	

This drawing and the design it covers are the property of BECHTEL. They are hereby loaned and in the borrower's custody agreement that they will not be reproduced, copied, made, combined, or used except in the limited way and for the purpose intended by the maker of the drawing.

GENERAL NOTES:

1. PC DENOTES PIECE NO.
2. W DENOTES WELD NO.
3. TOLERANCE FOR HANGER LOCATIONS IS ± 0.125"
4. FOR REFERENCE INFO ON STRUCTURE STL (REC. 8856-MIG-140) SEE UNISCO DWG. 100-1000-1
5. FOR REFERENCE INFO ON EXISTING 2" x 2" ANGLE IRON (REC. 8856-MIG-140) SEE UNISCO DWG. 100-1000-1
6. MAX. SPACING BETWEEN SERVICE WATER UDR SUPPORTS IS TO BE 8'-0"
7. ALL NUTS & BOLTS TO BE ELECTRO-GALVANIZED PER FED. SPEC. QQ-C-350A
8. ALL PIPE CLAMPS TO BE NICKEL PLATED PER MIL SPEC. QQ-N-210A-GRE
9. DESIGN OF SUPPORTS PER AWS.
10. REF. FOR M2050.
11. ALL W/ BOLTS TO BE TORQUED TO 4 FT/LBS.
12. TYPE OF WELD OPTIMAL EITHER BOTTOM OR SIDE OF UNISTRUT TO ANGLE DEPENDING UPON EXISTING FIELD CONDITIONS.
13. ITEMS MARKED WITH A * HAVE NOT BEEN VERIFIED.

PRO APERTURE CARD

PENNSYLVANIA POWER & LIGHT COMPANY
ALLENTOWN, PENNSYLVANIA

BECHTEL ENGINEERING
SAN FRANCISCO, CALIFORNIA

SERVICE WATER LEADER SUPPORTS FOR SOUTH SIDE CONTROL ROD DRIVE

JOB No. 8856 DRAWING No. VP-CR1-109-1 REV. 4

820 7010128

FLA-1167 ATTACHMENT 11

RIDS

8207010128

