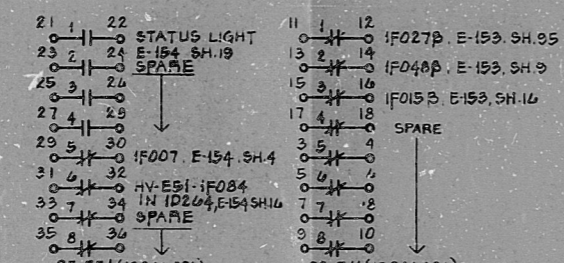
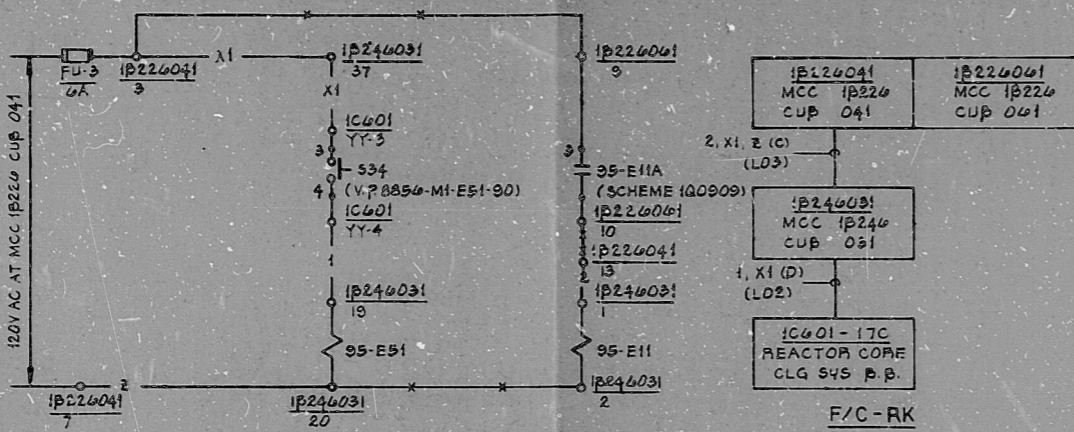
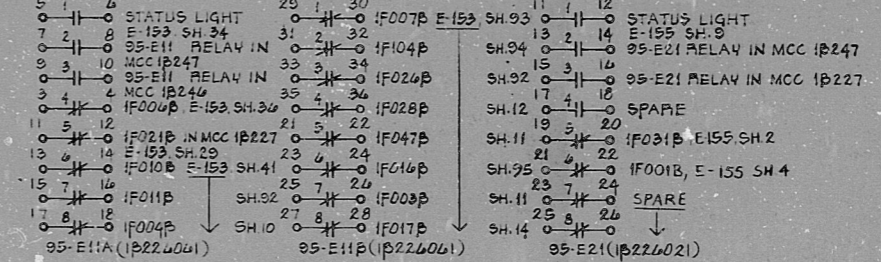
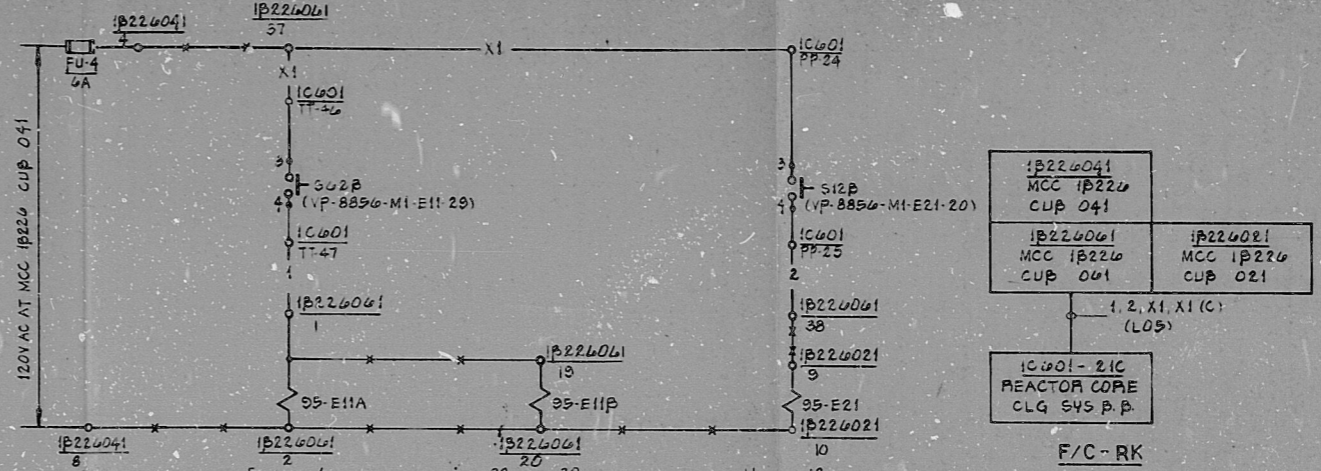


This drawing and the design it covers are the property of BECHTEL. They are hereby loaned and on the borrower's express agreement that they will not be reproduced, copied, leased, established, nor used except in the limited way and purpose use permitted by any written consent given by the licensor to the borrower.

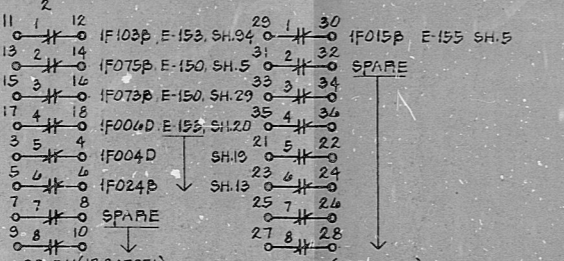
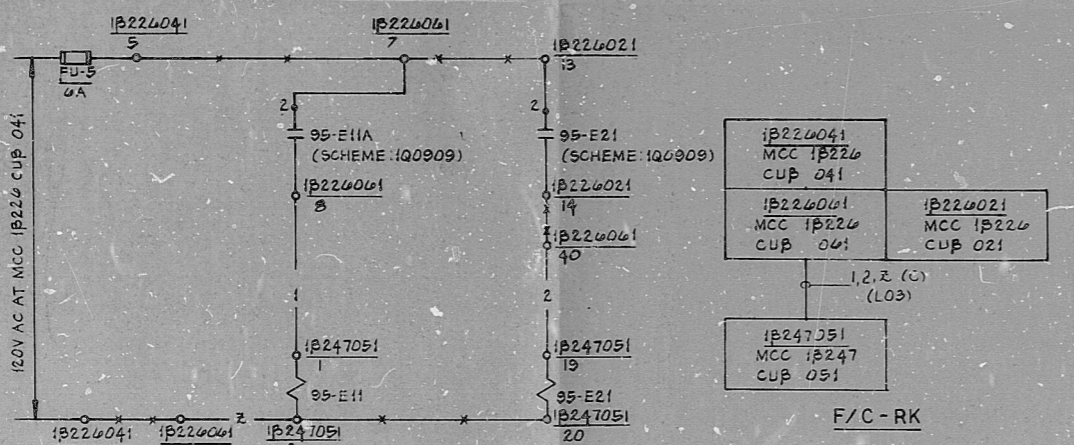


BYPASS INDICATION SYSTEM-AUX CONTROL
SCHEME NO. 1Q0908

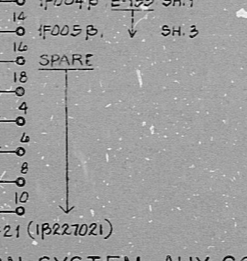
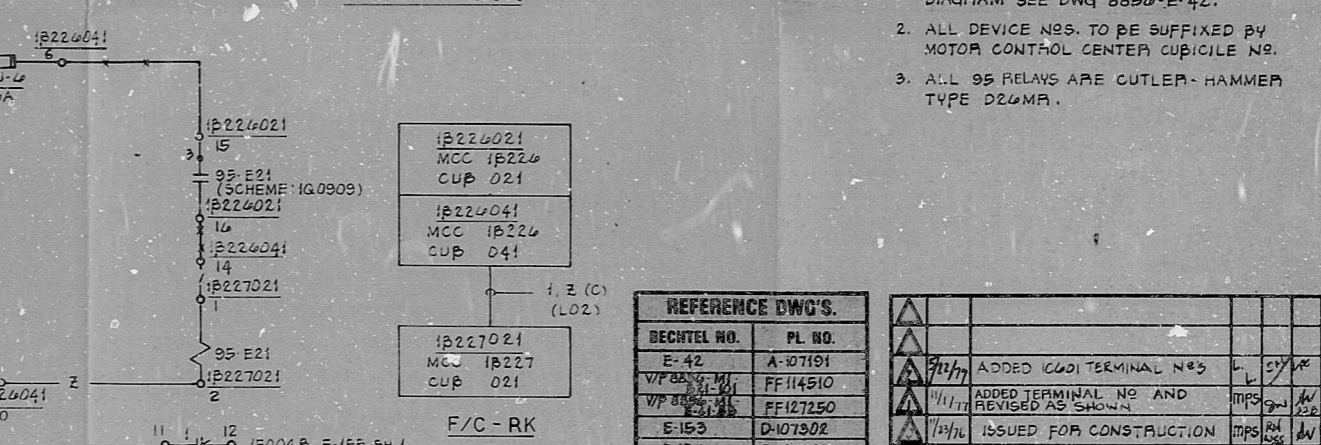


BYPASS INDICATION SYSTEM-AUX CONTROL
SCHEME NO. 1Q0909

- NOTES:
- FOR STANDARD SYMBOL FOR ELECTRICAL DIAGRAM SEE DWG 8856-E-42.
 - ALL DEVICE NOS. TO BE SUFFIXED BY MOTOR CONTROL CENTER CUBICLE NO.
 - ALL 95 RELAYS ARE CUTLER-HAMMER TYPE D26MR.



BYPASS INDICATION SYSTEM-AUX CONTROL
SCHEME NO. 1Q0910



BYPASS INDICATION SYSTEM-AUX CONTROL
SCHEME NO. 1Q0911

BECHTEL NO.	PL. NO.
E-42	A-107191
VP 8856-M1	FF-114510
VP 8856-M1	FF-127250
E-153	D-107302
E-154	D-107303
E-155	D-107304
E-150	D-107299
VP 8856-E118	FF-103180
VP 8856-M1	FF-124510

DATE	REVISION	BY	CHECK	SUPV.	ENGR.	APPV.
9/17/77	ADDED C601 TERMINAL NOS					
11/17/77	ADDED TERMINAL NO AND REVISED AS SHOWN					
1/17/78	ISSUED FOR CONSTRUCTION					

DESIGNED: NSZCZEPANSKI DRAWN: MFSANTOS

PENNSYLVANIA POWER & LIGHT COMPANY
ALLENTOWN, PENNSYLVANIA
SUSQUEHANNA STEAM ELECTRIC STATION - UNIT 1, UNIT 2

BECHTEL - SAN FRANCISCO

**SCHEMATIC DIAGRAM
BYPASS INDICATION SYSTEM
UNIT 1**

JOB No.	DRAWING No.	REV.
8856	E-185 SH 3	2

D-107334SH 3 810 9310545

G1 P35 SCHEM BYPASS INDICATION SV W

RIDS-POR

8103310545

