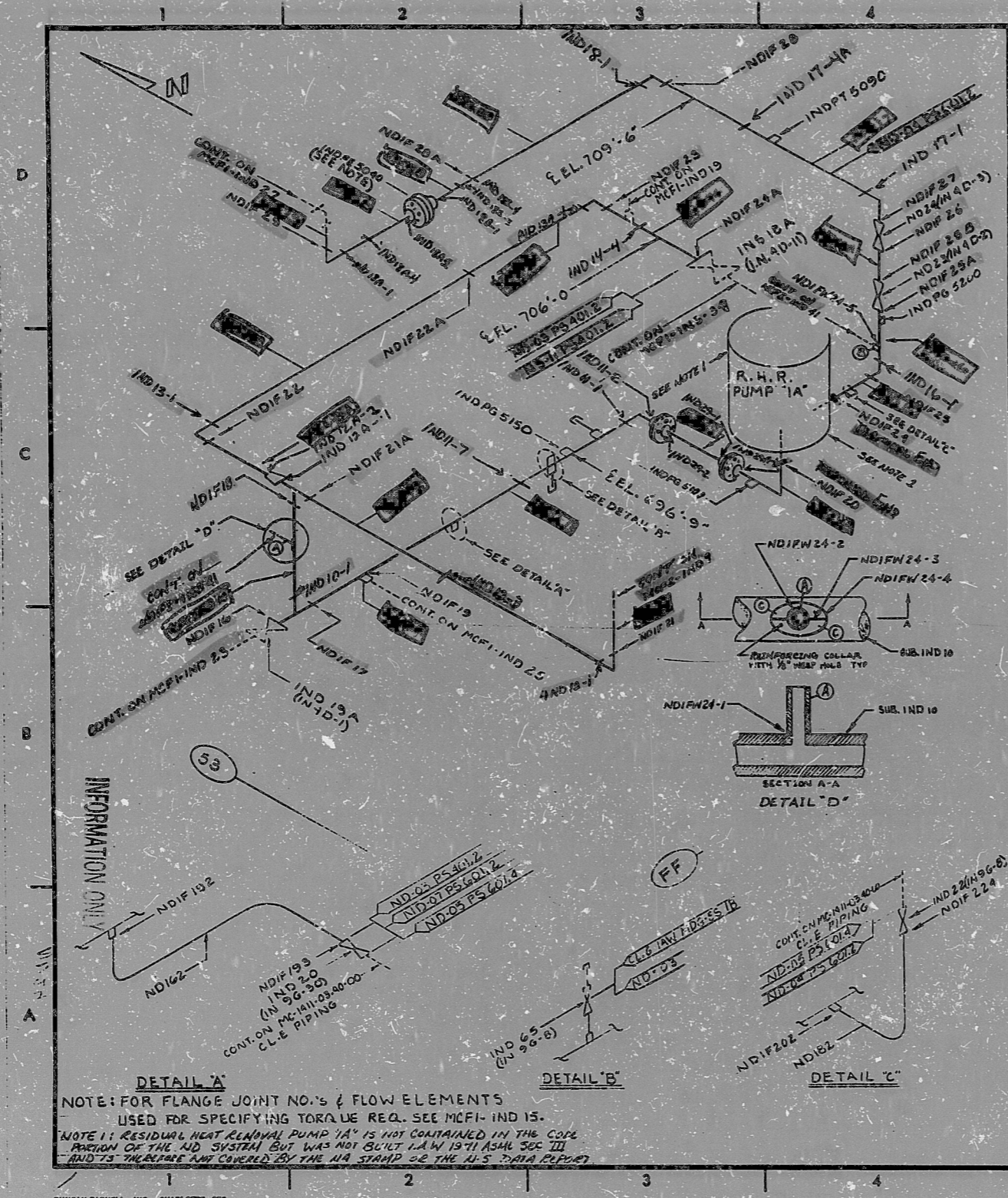
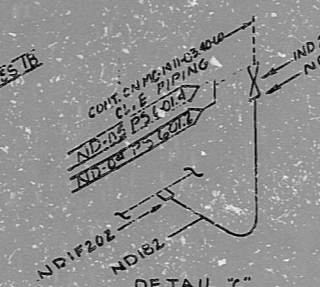
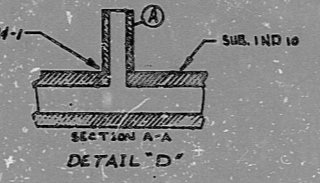


INSERVICE INSPECTION



GRID	REV. NO.	DESCRIPTION	DATE	BY	APPV. DATE
0		REL. FOR CONST.	12-20-70	JK	12-20-70
1		REVISED TO ADD NOTE 2	1-2-71	JK	1-2-71
2		REF. GA CONDITION I AND MATS. A, B, C, AND WELD NUMBERS NDIFW24-1, 24-2, 24-3, 24-4, 24-5, 24-6, 24-7, 24-8, 24-9, 24-10, 24-11, 24-12, 24-13, 24-14, 24-15, 24-16, 24-17, 24-18, 24-19, 24-20, 24-21, 24-22, 24-23, 24-24, 24-25, 24-26, 24-27, 24-28, 24-29, 24-30, 24-31, 24-32, 24-33, 24-34, 24-35, 24-36, 24-37, 24-38, 24-39, 24-40, 24-41, 24-42, 24-43, 24-44, 24-45, 24-46, 24-47, 24-48, 24-49, 24-50, 24-51, 24-52, 24-53, 24-54, 24-55, 24-56, 24-57, 24-58, 24-59, 24-60, 24-61, 24-62, 24-63, 24-64, 24-65, 24-66, 24-67, 24-68, 24-69, 24-70, 24-71, 24-72, 24-73, 24-74, 24-75, 24-76, 24-77, 24-78, 24-79, 24-80, 24-81, 24-82, 24-83, 24-84, 24-85, 24-86, 24-87, 24-88, 24-89, 24-90, 24-91, 24-92, 24-93, 24-94, 24-95, 24-96, 24-97, 24-98, 24-99, 24-100	1-2-71	JK	1-2-71
3		RELOCATED APERTURE FROM IND 11 TO IND 10 (SEE DETAIL 'D')	10-15-91	JK	10-15-91



NOTE: FOR FLANGE JOINT NO.'S & FLOW ELEMENTS USED FOR SPECIFYING TORQUE REQ. SEE MCFI-IND 15.

NOTE 1: RESIDUAL HEAT REMOVAL PUMP '1A' IS NOT CONTAINED IN THE CODE PORTION OF THE ND SYSTEM BUT WAS NOT BUILT IAW 1971 ASME SEC III AND IS THEREFORE NOT COVERED BY THE NIA STRAP OR THE NIS DATA REPORT

SI
APERTURE
CARD

ITEM	SIZE	DEC.	SPEC./GRADE	SPEC./GRADE	SCH./RATE	REMARKS
(C)	1/2" DIA	PIPE	SA-312/TP-304	SA-312/TP-304	40	3000#
(B)	2"	PIPE	SA-192/TP-304	SA-192/TP-304	40	3000#
(A)	3"	PIPE	SA-312/TP-304	SA-312/TP-304	40	3000#

OR

ITEM	SIZE	DEC.	SPEC./GRADE	SPEC./GRADE	SCH./RATE	REMARKS
(C)	1/2" DIA	PIPE	SA-312/TP-304	SA-312/TP-304	40	3000#
(B)	2"	PIPE	SA-192/TP-304	SA-192/TP-304	40	3000#
(A)	3"	PIPE	SA-312/TP-304	SA-312/TP-304	40	3000#

BILL OF MATERIAL - GA. CONDITION I

LAST WELD NO. NDIFW24-5

DUKE POWER COMPANY
McGUIRE NUCLEAR STATION

LAST FILE NO. SEE NOTE

NUCLEAR SAFETY RELATED

YES NO BUILDING: A-1 ZONE: A-1

PIPE SPEC: 401.2/601.2 SYS. SYMBOL: ND SEC. NO: ND-09.04 DRAWING NO: MC-1414-04.40-00 BL: 695-0

APPLICABLE CODE: ASME SECT III CLASS: B ISO. NO: MCFI-IND 24 REV: 3

PDR RIDS

9301130086

