

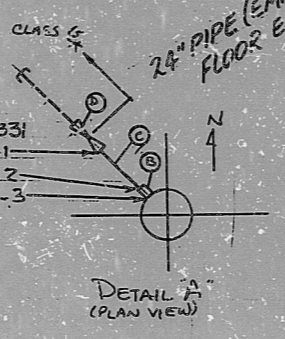
REV. 2	ISO. NO. MC-FI-IND 9	DUKE PIPING CLASS: B	BUILDING: AMX.
	ND	SYSTEM SYMBOL: ND-RESID. HEAT REM.	
		PIPING SPEC.: ND-03 P.S. 001.2	
		DRAWING NO.: MC-1414-04.94-00101	
		PROJECT: MCGUIRE	

QA CONDITION I

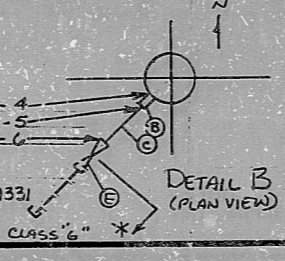
NO.	REVISION	DATE	APPR.
0	RELEASED FOR CONSTRUCTION		

2. ADDED DETAILS A&B, WELDS NDIFW9-1 thru 6, MAT'L & S.P.E. ADDENDUM 1
 1. REVISED PINE CAP TO S.E. (P.S.)
 0. RELEASED FOR CONSTRUCTION

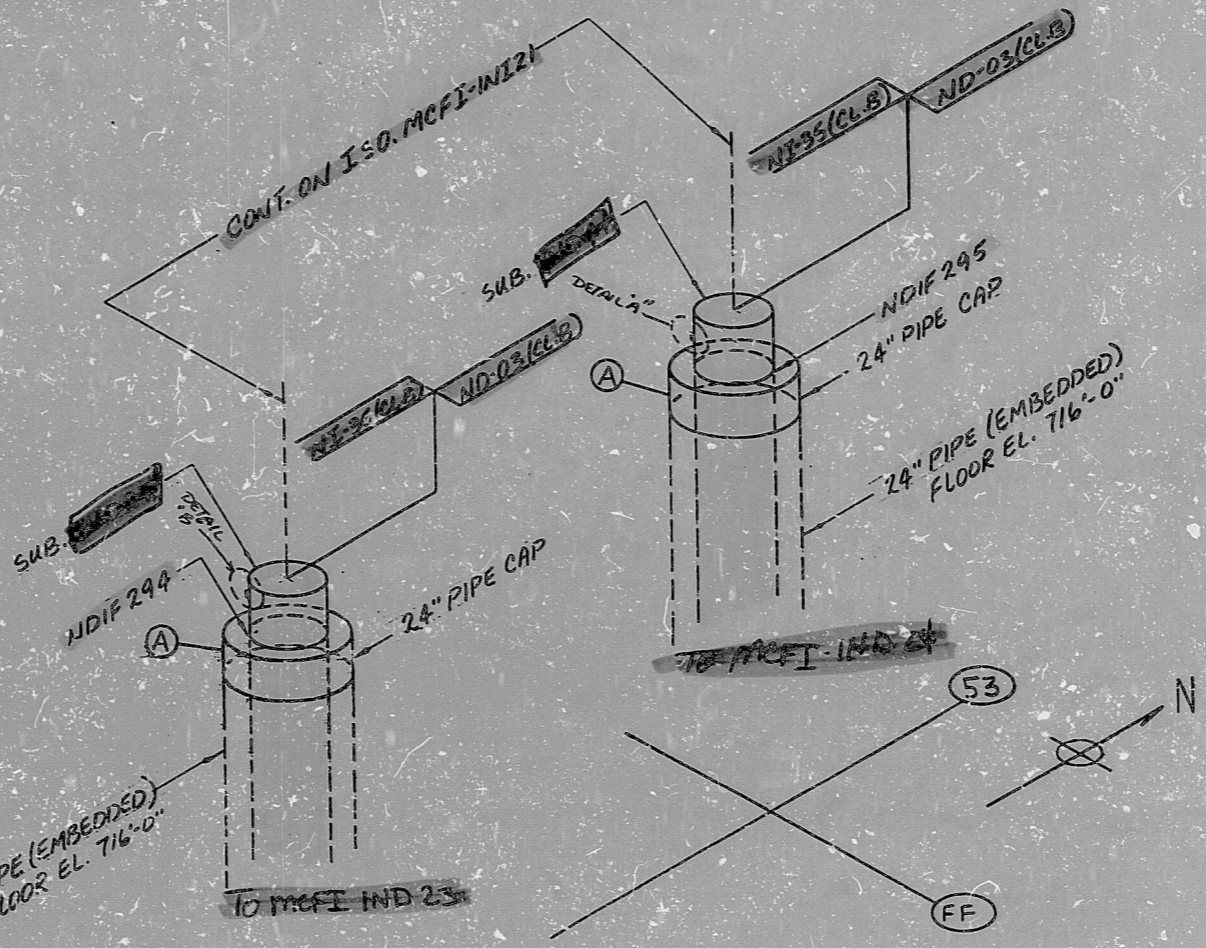
IND-98
 Item No. 9J331
 ND-FW9-1
 NDIFW9-2
 NDIFW9-3



IND-97
 Item No. 9J331



Note
 * INSTALL IAW MDS EG 1A (CLASS 'G')



(A) 24" PIPE CAP, SA-234 WPB 5LH X S

E	1"	VALVE	IND97	9J331	
D	1"	VALVE	IND98	9J331	
C	1"	PIPE	SA32/TP304	SA32/TP304	SCH 40 SMS/STW
B	1"	N. COUPL.	SA182/ES04	SA182/TP304	SS. SCH 3000#

MATERIALS

INFORMATION ONLY

SI APERTURE CARD

DUNLAP/PAWELL, INC., WILMINGTON, DE

PDR RIDS

9301130070

