

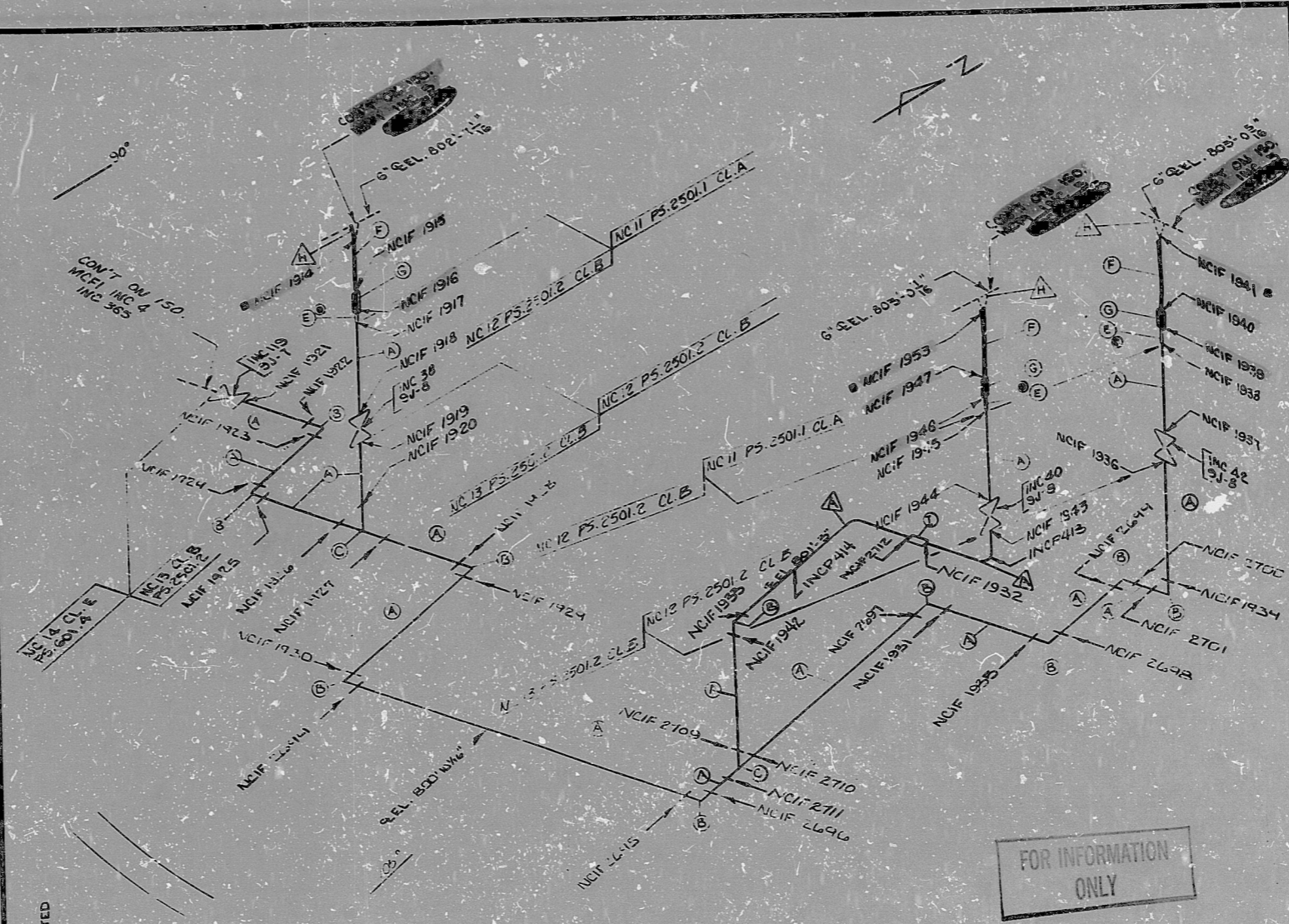
REV 5	160 NO. MCFI - INC 51	
	BUILDING: REACTOR	
	ZONE: R-6	
	DUKE PIPING CLASS: ASME SECTION III, CL. 2	
	SYSTEM SYMBOL: NC - REACTOR COOLANT	
	PIPING SPEC: NC II PS 2501.1, NC II PS 2501.2, NC II PS 2501.3, NC II PS 2501.4	
	DRAWING NO.: MC 1414-03-20-04	FL. EL. 775'-10"
	PROJECT: MC GUIRE	

	DATE	DATE	DATE	DATE	DATE	DATE	DATE	DATE	DATE
1	2/17/77	3/13/77	3/13/77	3/13/77	3/13/77	3/13/77	3/13/77	3/13/77	3/13/77
2	3/13/77	3/13/77	3/13/77	3/13/77	3/13/77	3/13/77	3/13/77	3/13/77	3/13/77
3	3/13/77	3/13/77	3/13/77	3/13/77	3/13/77	3/13/77	3/13/77	3/13/77	3/13/77
4	3/13/77	3/13/77	3/13/77	3/13/77	3/13/77	3/13/77	3/13/77	3/13/77	3/13/77
5	3/13/77	3/13/77	3/13/77	3/13/77	3/13/77	3/13/77	3/13/77	3/13/77	3/13/77
6	3/13/77	3/13/77	3/13/77	3/13/77	3/13/77	3/13/77	3/13/77	3/13/77	3/13/77
7	3/13/77	3/13/77	3/13/77	3/13/77	3/13/77	3/13/77	3/13/77	3/13/77	3/13/77
8	3/13/77	3/13/77	3/13/77	3/13/77	3/13/77	3/13/77	3/13/77	3/13/77	3/13/77
9	3/13/77	3/13/77	3/13/77	3/13/77	3/13/77	3/13/77	3/13/77	3/13/77	3/13/77
10	3/13/77	3/13/77	3/13/77	3/13/77	3/13/77	3/13/77	3/13/77	3/13/77	3/13/77

NO.	REVISION	DATE	DATE
1	RELEASE FOR CONSTRUCTION V1 # 11752		
2	CHANGED DUCTWORK TO WELDED		
3	ADDED WELDS TO FAB SHOP WELDS		
4	ADDED WELDS TO FAB SHOP WELDS		
5	ADDED WELDS TO FAB SHOP WELDS		
6	ADDED WELDS TO FAB SHOP WELDS		
7	ADDED WELDS TO FAB SHOP WELDS		
8	ADDED WELDS TO FAB SHOP WELDS		
9	ADDED WELDS TO FAB SHOP WELDS		
10	ADDED WELDS TO FAB SHOP WELDS		



NUCLEAR, SAFETY RELATED

NOTE: THIS SYMBOL DENOTES MATERIAL THAT IS PART OF A PREASSEMBLED SECTION. IT IS TO BE USED BY THE INSPECTOR FOR FIT-UP AND HEAT NUMBER CHECK ONLY.

THIS SYMBOL DENOTES WELDS MADE IN FAB SHOP.

SI APERTURE CARD

TEMP.	SIZE	DES.	SPEC.	GRADE	OR SPEC.	GRADE	SCH. / RATING	QUANTITY	REMARKS
150	3/4"	90° ELBON	SA-182	TP-304	OR	SA-403	WPB	6000#	FS.S.W. - 3 REQ'D.
150	1/2"	SWEETPOLET	SA-182	F-304	OR	SA-403	WPB	6000#	221" WALL, 3/8" REQ'D.
150	1/2"	F/CPLG.	SA-182	F-304	OR	SA-403	WPB	6000#	FS.S.W. - 3 REQ'D.
150	1/2"	PIPE	SA-376	TP-304	-	-	-	SCH. 160	FS.S.W. - 4 REQ'D.
150	3/4"	RED. INS	SA-182	F-304	OR	SA-403	WPB	6000#	FS.S.W. - 2 REQ'D.
150	3/4"	F/CPLG.	SA-182	F-304	OR	SA-403	WPB	6000#	FS.S.W. - 4 REQ'D.
150	3/4"	TEE	SA-182	F-304	OR	SA-403	WPB	6000#	FS.S.W. - 2 REQ'D.
150	3/4"	90° ELBON	SA-182	F-304	OR	SA-403	WPB	6000#	FS.S.W. - 4 REQ'D.
150	3/4"	PIPE	SA-376	TP-304	-	-	-	SCH. 160	219" WALL, 3/8" REQ'D.
150	3/4"	DES.	SPEC	GRADE	OR SPEC.	GRADE	SCH. / RATING	-	MISC.

FOR INFORMATION ONLY

BILL OF MATERIAL

PDR RIDS

9301130056

