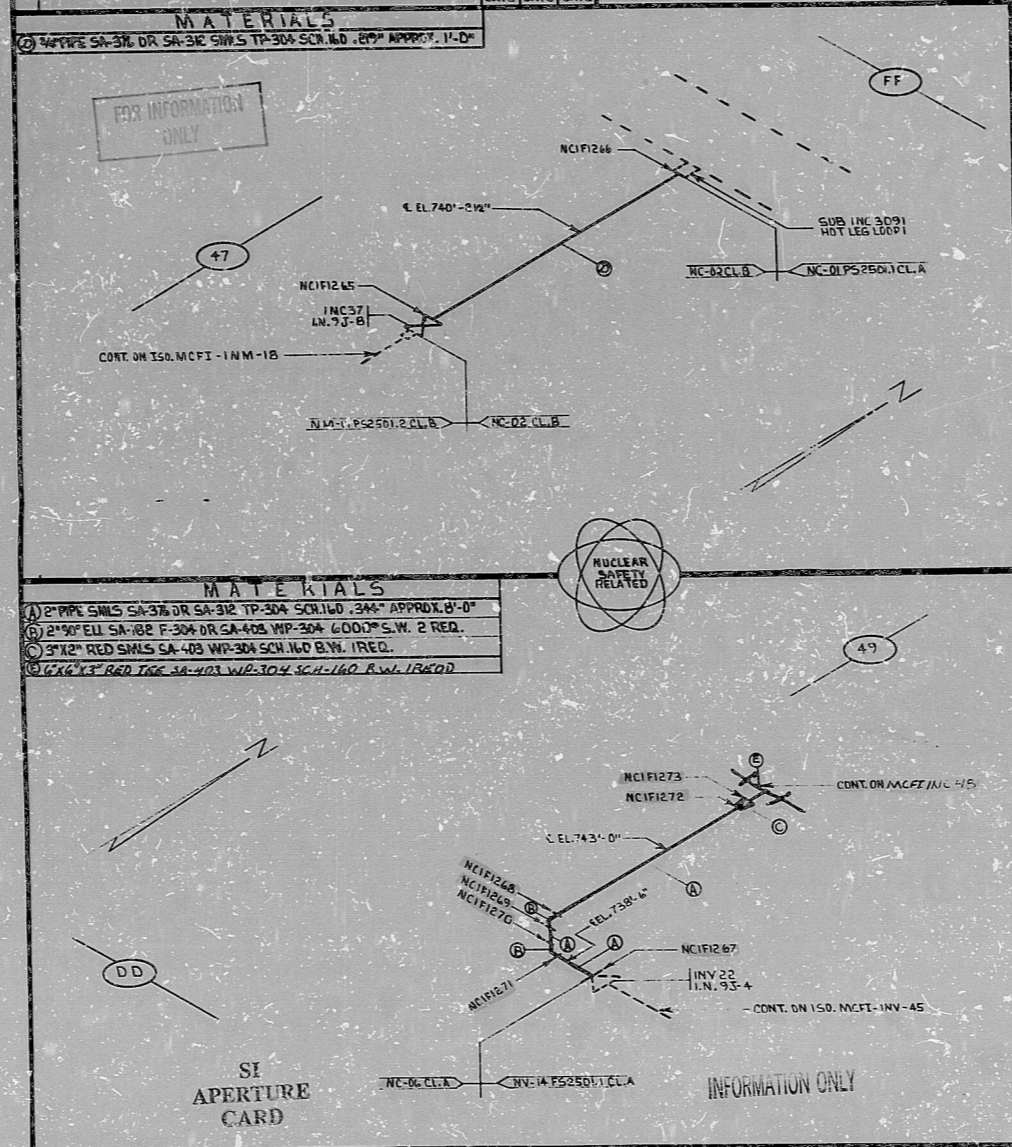


105611-1 INSPEC-1.0

4	REVISED TO CHANGE MATL. (D) TO (C) IN LOWER SECTION	11/15/68	11/15/68	ISO. NO: MCFI-INC-28	REV. 4
3	REVISED DSD CONTINUATION	11/15/68	11/15/68	DUKE PIPING CLASS: AGNE SECT. III CL. A/B	BUILDING: REACTOR
2	ADDED TO DSD	11/15/68	11/15/68	SYSTEM SYMBOL: REACTOR COOLANT	
1	REVISED TO CORRECT DSD SECTION OF MATERIALS	11/15/68	11/15/68	PIPING SPEC: NC-02 PS250.2 NC-04 PS250.1	
0	REL. FOR CONST.	11/15/68	11/15/68	DRAWING NO: NC-114-03.20-00,02	
NO	REVISION	DATE	DATE	PROJECT: MCGUIRE	



PDR RIDS

9301130030

