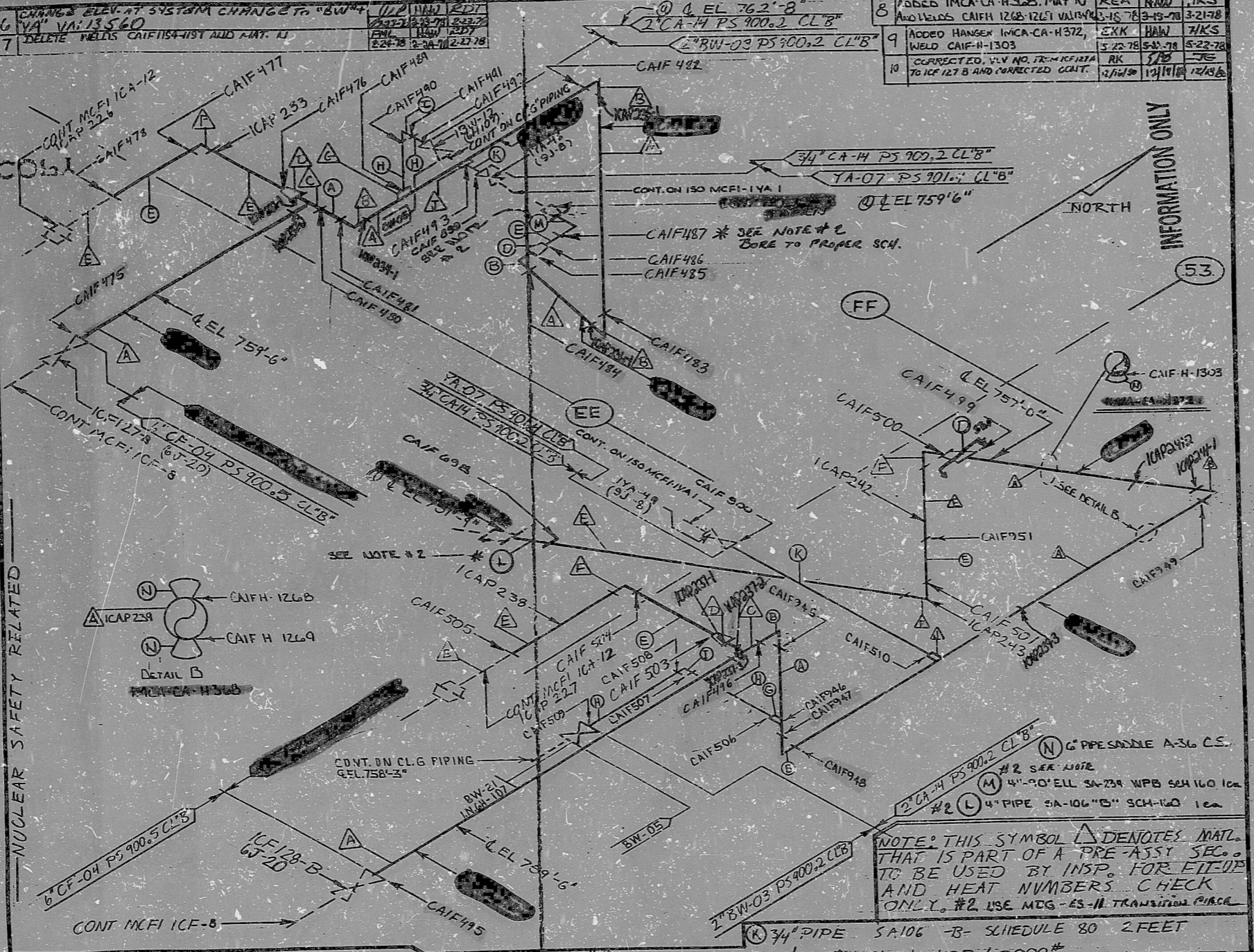


INSER VICE INSPECTION

ISO. NO.: MCFI-ICA-13  
 BUILDING: RELATIONS ZONE R8  
 DUKE PIPING CLASS: ASME SECTION III CLB  
 SYSTEM SYMBOL: CA-14  
 PIPING SPEC.: PS-100.2  
 DRAWING NO.: MC-1403-01-20-00-101  
 PROJECT: MCFI-13

REV.	DATE	DESCRIPTION
5	2/17/78	ADDED WELDS CAIF 1194-1197 AND MATERIAL (N)
4	1/17/78	DELETED WELDS CAIF 497 & 498. CONFIL. CHANGE ADDED WELDS CAIF 495 THRU CAIF 498 SCAP 51. PER VIL. 12305
3	1/17/78	REMOVED PENETRATIONS
2	1/17/78	ADDED CONTINUATIONS AND WELDS CAIF 899, CAIF 900 AND TRANSITION PIPE 14 L" AND CONT. AT TRAIT TRAIT
1	1/17/78	RELEASED FOR CONSTRUCTION PER VV. 8762
0		



(A) 4" PIPE SA106 -B- SCHEDULE 80 4 FEET	(K) 3/4" PIPE SA106 -B- SCHEDULE 80 2 FEET
(B) 6"x4" RED. SA 234 WPB SCHEDULE 80 2 REQUIRED	(L) 4" PIPE SA-106 "B" SCH-160 1 ea
(C) 6"x6" TEE SA234 WPB SCHEDULE 80	(M) 4"x90" ELL SA-234 WPB SCH 160 1 ea
(D) 6" 90" ELL SA234 WPB SCHEDULE 80 1 REQUIRED	(N) 6" PIPESADDE A-36 C.S.
(E) 6" PIPE SA106 -B- SCHEDULE 80 1'-6" REQUIRED	(O) #2 SEE NOTE
(F) 4" 90" ELL SA234 WPB SCHEDULE 80 1 REQUIRED	(P) #2 SEE NOTE
(G) 2" HALF CPLG. SA105/3000" - SA234 WPB / 3000"	(Q) #2 SEE NOTE
(H) 2" PIPE SA 106 -B- SCHEDULE 80 7 FEET	(R) #2 SEE NOTE
(I) 2" 90" ELL SA105/3000" - SA234 WPB / 3000"	(S) #2 SEE NOTE
(J) 2" PIPE SA 106 -B- SCHEDULE 80 7 FEET	(T) #2 SEE NOTE

8	ADDED IMCA-CA-H368, MAT N AND WELDS CAIFH 1268-1269 VALVE	REA	RAW	JKS
9	ADDED HANSEN IMCA-CA-H372, WELD CAIF-H-1303	EXK	HAW	JKS
10	CORRECTED VLV NO. FROM KFH11A TO KCF 127 B AND CORRECTED CONT.	RK	JTB	JKS

INFORMATION ONLY

SI APERTURE CARD

DUNHAM-PARFEL, INC., CHARLOTTE 1578



9212100075

PDR RIDS

9301120293

